

CERTIFICATE OF LOCATION OF GOVERNMENT CORNER

East Quarter _____ Corner of Section 10, Township 140, Range 26, 5th P.M.

STATE OF MINNESOTA, County of Cass

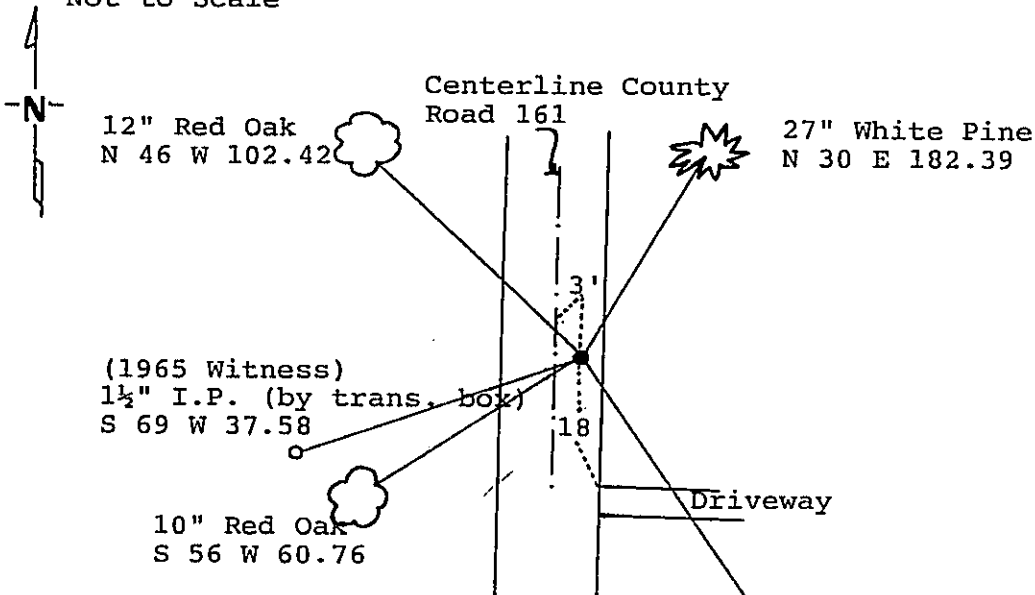
At the corner location shown on the sketch:

On 11/22/89 found a 4" County cast iron monument 9" below road surface. ^{DATE} Set 3/8" by 6" rerod over monument.

left monument as found, lowered monument, removed monument (explain)

On _____ placed a _____
DATE

Magnetic Decl: 5° East SKETCH OF REFERENCE TIES
Not to Scale



Monument is 9" below surface of road, 3' Easterly of centerline of County Road, 18' Northerly of driveway easterly.
7' steel sign post West 20'±.

Statement of evidence relative to this corner location is on back of page. 317223

I hereby certify that this document and the data contained herein was prepared by me or under my direct supervision.

[Signature] 11/29/89
SIGNATURE DATE

Registration No. 17008

- Land Surveyor, Professional Engineer
 County Surveyor, County Engineer

OFFICE OF THE REGISTER OF DEEDS
County of Cass

I hereby certify that this document was filed in the Reg. of Deeds office at 3:15 P. .M. on the 7 day of Dec. A.D., 1989

Register of Deeds Claudine Kayler
By ms, Deputy

DOCUMENT NO. 317223

East Quarter Corner, Section 10, Township 140
North, Range 26 West, Cass County, Minnesota

- 1871 Walker, Allen and Putnam, U.S. Deputy Surveyors, originally established this corner position while subdividing Township 140 North, Range 26 West. The notes indicate a wood post was set to mark the corner and the following witnesses: an 8 inch Birch South 62 degrees West a distance of 16 links; and an 8 inch Tamarack North 17 degrees East a distance of 19 links.
- NO DATE County Surveyors Record Book B, pages 88-89 show a survey by George A. Ralph. The notes are for survey of State Rural Highway Number 83 and show ties for the corner.
- 1917 County Surveyors Record Book B, pages 377-383 show a survey by John Curo. The notes indicate that he found Ralph's ties: Oak Southwest 64.50 and Maple Northwest 91.5.
- 1965 County Surveyors Record Book D, page 455 show a survey by R.F. Schneider. The notes indicate that he set a 1 inch iron pipe in centerline of North-South road from the old Curo ties. The notes show the following ties: a 20 inch White Oak South 38 degrees West a distance of 64.5 feet; a 2 inch iron pipe South 65 and 1/2 degrees West a distance of 37.4 feet; P.P. North 61 degrees West a distance of 41.5 feet; a Maple stump North 53 and 1/2 degrees West a distance of 91.5 feet. The notes show the corner is 14.8 feet north of centerline of road to east.
- 1983 A Gary Stevenson & Associates, Inc., survey crew find the 1 inch iron pipe as set by Schneider in 1965 and the pipe South 65 and 1/2 degrees West 37.4 feet and the 1917 Maple stump Northwest. They set a County cast iron monument.
- 1989 on November 22, a Landecker-Stevenson & Associates, Inc., survey crew found the cast iron monument set by Stevenson down 9 inches below surface of road and set a 3/8 by 6 inch rerod over monument. New bearing trees were marked as shown and a steel sign post set as noted on front of this certificate.