

CERTIFICATE OF LOCATION OF GOVERNMENT CORNER

NORTHEAST CLOSING Corner of Section 3, Township 140 N, Range 29 W, 5th P.M.

STATE OF MINNESOTA, County of CASS

At the corner location shown on the sketch: Latitude: 46° 58' 46.006"
 Longitude: 94° 19' 13.435"

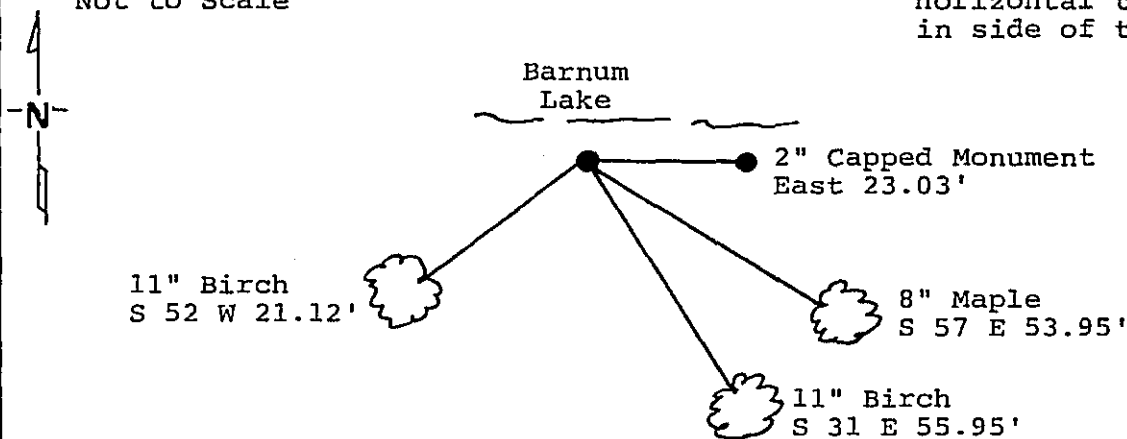
On 5/27/88 found a 2" iron monument with a brass cap
DATE

left monument as found, lowered monument, removed monument (explain)

On _____ placed a _____
DATE

Magnetic Decl: 5° East SKETCH OF REFERENCE TIES
 Not to Scale

All distances are horizontal to nail in side of tree



Monument Stamped

T 141 N R 29 W
 S 35
 S 3 S 2
 cc
 T 140 N R 29 W
 1965

Monument is located off of the south shore of bay in Barnum Lake
 8' sign post east 5.0'

RLS No. 6807

Statement of evidence relative to this corner location is on back of page. 312 374

I hereby certify that this document and the data contained herein was prepared by me or under my direct supervision.

Donald A. Laska 5-27-89
SIGNATURE DATE

Registration No. 17008

- Land Surveyor, Professional Engineer
 County Surveyor, County Engineer

OFFICE OF THE REGISTER OF DEEDS
 County of Cass

I hereby certify that this document was filed in the Reg. of Deeds office at 11:10 A.M. on the 25 day of May A.D., 1989

Register of Deeds Cloudeine Kaylon
 By MS Deputy

DOCUMENT NO. 312 374

Statement of Evidence:

Closing Corner Sections 2 and 3, Township 140
North, Range 29 West, Cass County, Minnesota

A-17 140-29
Bk.4 Pg.31

1870 Orville Smith, U.S. Deputy Surveyor, subdivided Township 140 North, Range 29 West. His notes show that he set a closing corner 11.60 chains East of Standard Corner 34 and 35, Township 141 North, Range 29 West. Bearing trees: a 10 inch dead Pine South 14 degrees East a distance of 50 links; and a 4 inch White Birch South 75 degrees West a distance of 40 links.

1915 County Surveyor's Record Book C page 242 show survey by F.A. Donner. He set a 2 inch by 48 inch iron monument with cap proportionally from Meander Corner Number 8.

1915 County Surveyor's Record, resurvey plat in cabinet E, Number 23, in the Cass County Recorder's Office, show survey by John Curo. He found a 2 and 1/2 by 48 inch iron monument previously established.

1965 U.S. Forest Service records show the following: found 2 inch iron pipe as set in 1915 by John Curo. They set a 2 inch by 5 foot iron pipe with 3 inch bronze tablet; an 8 inch Birch South 52 degrees West a distance of 21.3 feet; a 9 inch Birch South 31 degrees East a distance of 55.7 feet; and a 6 foot sign post East a distance of 9.4 feet.

1966 Robert F. Schneider, Registered Land Surveyor Number 5740, found the 2 inch capped County iron pipe and USFS 2 inch brass capped iron pipe.

1968 Robert F. Schneider, Registered Land Surveyor Number 5740, plat of FIRST ADDITION TO PINE SHORE ESTATES, shows corner in place, as he had previously found.

1988 on May 27 a Landecker-Stevenson & Associates crew visited the corner and found the following evidence: USFS brass cap monument and county capped iron pipe in good condition. It was determined that this pipe fit monumentation as established by the County in 1915. New bearings were marked and sign post set as shown on front of this certificate.