

CERTIFICATE OF LOCATION OF GOVERNMENT CORNER

Witness Corner to

East Quarter _____ Corner of Section 27, Township 141 N, Range 30 W, 5th P.M.

STATE OF MINNESOTA, County of Cass

At the corner location shown on the sketch:

Latitude: 47° 00' 08.725"

Longitude: 94° 26' 59.108"

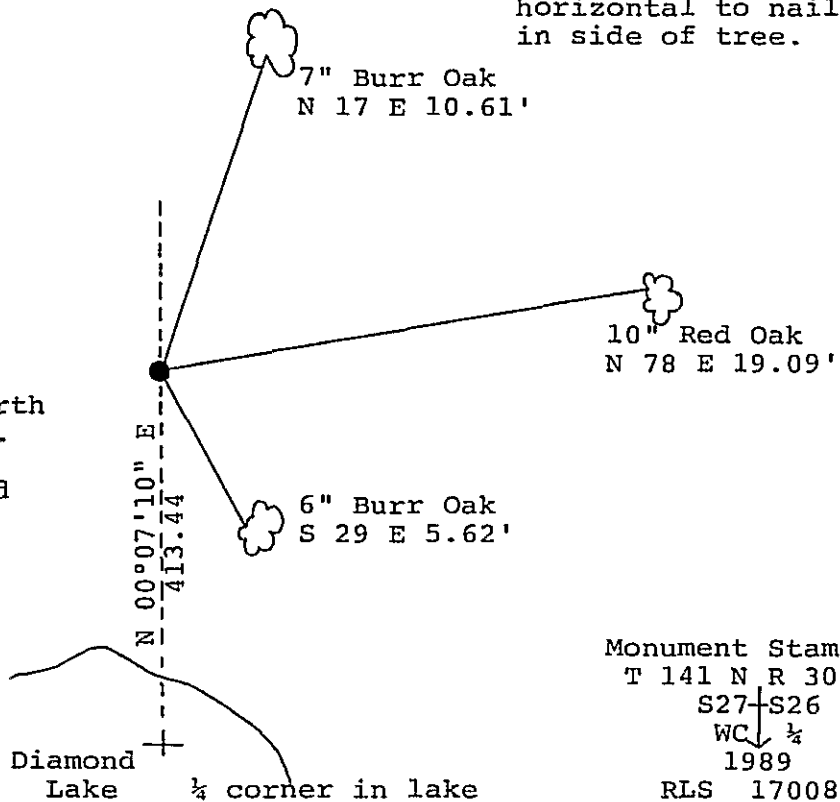
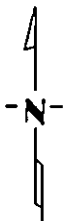
On _____ found a _____
DATE

left monument as found, lowered monument, removed monument (explain)

On 3/8/89 placed a 2 inch by 48 inch iron pipe with brass cap
DATE and plastic base with magnet.

Magnetic Decl: 5° East SKETCH OF REFERENCE TIES
Not to Scale

All distances are horizontal to nail in side of tree.



Monument is located 92'± Northerly of north edge of Diamond Lake.

All trees are painted with red enamel and marked with a 54-3 (bearing tree) tag.

Monument Stamped
T 141 N R 30 W
S27+S26
WC ↓ ¼
1989
RLS 17008

Statement of evidence relative to this corner location is on back of page.

312 371

I hereby certify that this survey, plan or report was prepared by me or under my direct supervision and that I am a duly Registered Land Surveyor under the laws of the State of Minnesota.

David S. Landecker
David S. Landecker
Date 5-24-89 Registration No. 17008

OFFICE OF THE COUNTY RECORDER

County of Cass

I hereby certify that this document was filed in the Co. Recorders office at 10:55 A.M. on the 25 day of May A.D., 19 89

County Recorder Clonidine Kayh

By Ms, Deputy

DOCUMENT NO. 312 371

Statement of Evidence:

Witness to East Quarter Corner Section 27,
Township 141 North, Range 30 West, Cass County,
Minnesota

ST-17 141-30
Bk.5 Pg.54

1873 P. H. Conger, U.S. Deputy Surveyor, originally established a meander corner position on the North side of Diamond Lake while subdividing Township 141 North, Range 30 West. The notes indicate a wood post was set to mark this meander corner position and the following witnesses: a 24 inch White Pine North 21 degrees East a distance of 94 links; and a 18 inch White Pine North 11 degrees West a distance of 216 links. The East Quarter corner was not set as its position fell in the lake.

1965 U.S. Forest Service records show the following: technician Ekstrom searched for the meander corner, but found no evidence.

1986 U.S. Forest Service crews set an aerial target in the vicinity of this corner for the search and establishment of the true corner position. The target having coordinate values through the use of GPS on the Chippewa South Boundary Project Cadastral Survey U.S. Project Number 53-6392-8-219. This target allowed for the search and location of this corner.

1988 on September 9 a Landecker-Stevenson & Associates crew searched for the meander corner on the North shore of Diamond Lake. The following information was found and noted: find possible pine remains, but no scribing. Meander corner position falls in a location significantly north of lake. This corner was determined lost. The East Quarter corner position falls near edge of lake, in water. It was determined a Witness to the Quarter Corner would be set.

1989 on March 8 a Landecker-Stevenson & Associates crew set a 2 inch by 48 inch iron pipe with brass cap and plastic base with magnet for witness to the quarter corner. Bearing trees were marked as shown and a steel sign post is in place as noted on front of this certificate.