

CERTIFICATE OF LOCATION OF GOVERNMENT CORNER

Northeast Corner of Section 13, Township 141 N, Range 31 W, 5th P.M.

STATE OF MINNESOTA, County of Cass

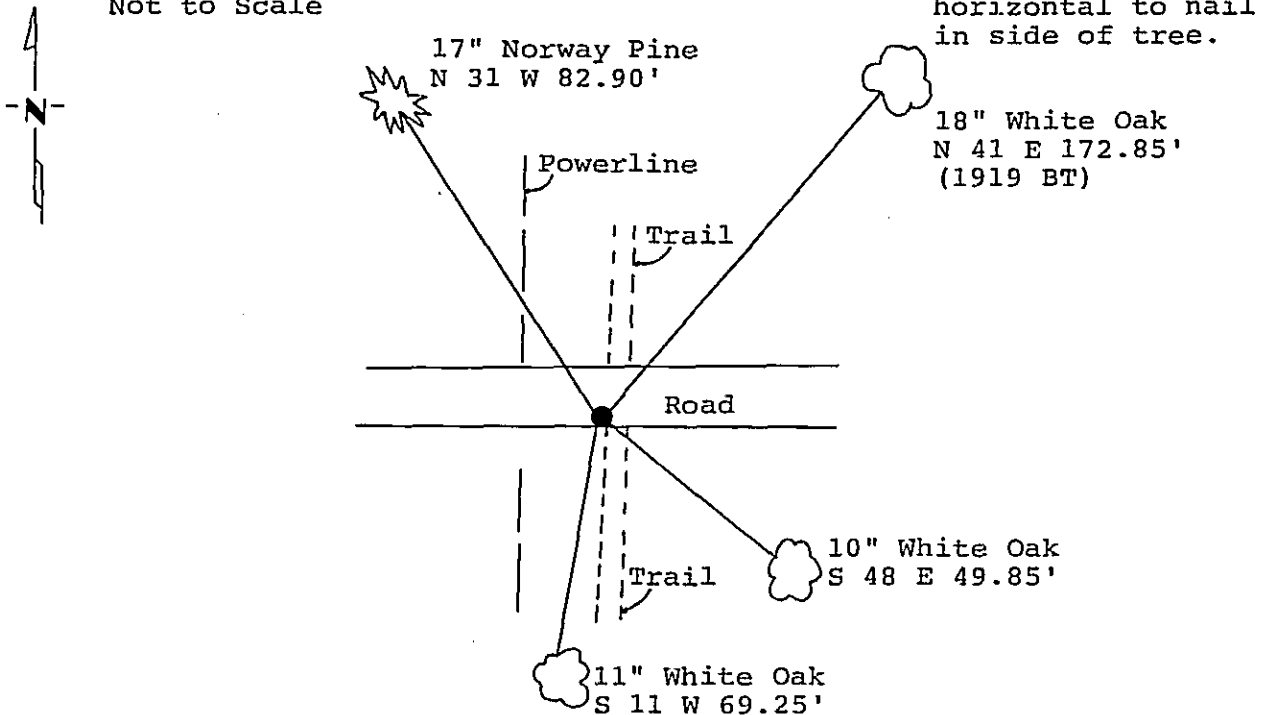
At the corner location shown on the sketch: Latitude: 47° 02' 18.415"
 Longitude: 94° 32' 03.559"

On 7/26/88 found a 4" x 20" cast iron monument down 6" with
DATE
found 1" x 20" iron pipe on West side of cast iron.
 left monument as found, lowered monument, removed monument (explain)

On _____ placed a _____
DATE

Magnetic Decl: 5° East SKETCH OF REFERENCE TIES
 Not to Scale

All distances are horizontal to nail in side of tree.



All trees are painted with red enamel and marked with a 54-3 (bearing tree) tag.

Statement of evidence relative to this corner location is on back of page. 312368

I hereby certify that this survey, plan or report was prepared by me or under my direct supervision and that I am a duly Registered Land Surveyor under the laws of the State of Minnesota.

David S. Landecker
 David S. Landecker
 Date 5-24-89 Registration No. 17008

OFFICE OF THE COUNTY RECORDER
 County of Cass

I hereby certify that this document was filed in the Co. Recorders office at 10:40 A.M. on the 25 day of May A.D., 1989
 County Recorder Claudia Kayler
 By MS, Deputy
 DOCUMENT NO. 312368

Statement of Evidence:

Northeast Corner Section 13, Township 141 North,
Range 31 West, Cass County, Minnesota

J-25 141-31

1873 P.H. Conger, U.S. Deputy Surveyor, ran the East line of Township 141 North, Range 31 West. He set a wood post and marked the following bearing trees: a 24 inch White Pine North 30 degrees 30 minutes East a distance of 9 links; an 8 inch Aspen North 23 degrees West a distance of 35 links; a 10 inch Aspen South 12 degrees West a distance of 135 links; and a 9 inch White Pine South 1 degree West a distance of 235 links.

1911 County Survey Record Book A pages 384-385 shows a survey by John Curo. He found a wood stake set previously from the old government bearing trees. He set a 2 inch by 48 inch capped galvanized iron pipe.

1912 M.A. Kemp found the iron pipe set in 1911 by Curo.

1917 U.S. General Land Office resurvey found the Northeast and Southwest original bearing trees and a 2 inch gas pipe as set in 1911 by Curo. They set a 2 inch by 36 inch iron pipe with brass cap and marked the following bearing trees: a 5 inch Oak North 39 degrees East a distance of 265 links; a 12 inch Oak South 54 degrees East a distance of 15 links; a 4 inch Pine South 20 and 1/4 degrees West a distance of 133 links; and a 5 inch Pine North 29 degrees West a distance of 116 links.

1921 State Highway Department map in Cass County Recorder's Office shows that the corner is 1409.6 feet East of center line of road.

1978 Walt Curo, RLS Number 11395, surveys in Section 12, Township 141 North, Range 31 West. He finds monuments at the Northeast, East Quarter and South One-Sixteenth corner on the East line of said Section 12 and the South Quarter corner of said Section 12. He then established the Southeast corner of the section in a proportional position utilizing the 1911 and 1917 survey records from the found monuments. He then set a 1 inch by 20 inch iron pipe for this corner.

1985 on May 2, the Cass County Surveyors Office and USFS technician, Curt Krause replaced the 1 inch by 20 inch iron pipe as set by Curo in 1978 and set a 4 inch by 20 inch cast iron monument down 6 inches and replaced the 1 inch iron pipe on the East side of the new monument. The 1918 Northeast bearing tree is in place at bearing and distance. Did not cut open as it falls in a yard. New bearing trees were marked: a 17 inch Norway Pine North 31 degrees West a distance of 82.90 feet; an 18 inch White Oak North 41 degrees East a distance of 172.85 feet (1919 GLO); a 10 inch White Oak South 48 degrees East a distance of 49.85 feet; and an 11 inch White Oak South 11 degrees West a distance of 69.25 feet.

CERTIFICATE OF LOCATION OF GOVERNMENT CORNER

Northeast Corner Section 13, Township 141 North,
Range 31 West, Cass County, Minnesota

J-25 141-31

1986 U.S. Forest Service crews set an aerial target over this corner position for determination of coordinate values through the use of GPS on the Chippewa South Boundary Project Cadastral Survey U.S. Project Number 53-6392-8-219. This target allowed for the search and location of this corner.

1988 on July 26 a Landecker-Stevenson & Associates crew found USES monument in place and 1985 bearing trees in good condition. This corner was considered a perpetuation of the original corner as established by previous surveys.