

CERTIFICATE OF LOCATION OF GOVERNMENT CORNER

East Quarter Corner of Section 25, Township 141 N, Range 28 W, 5th P.M.

STATE OF MINNESOTA, County of Cass

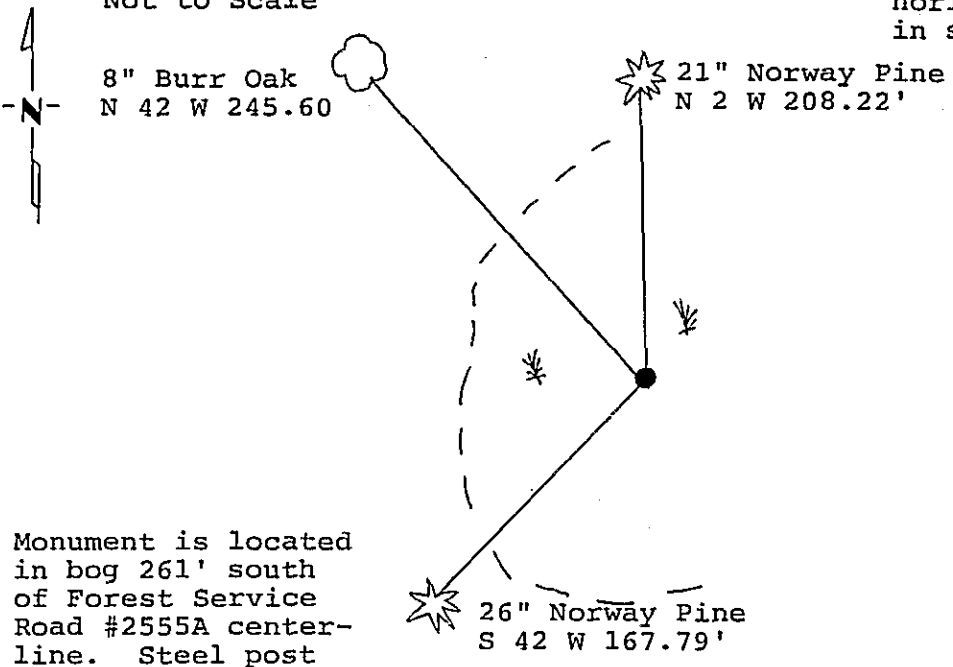
At the corner location shown on the sketch: Latitude: 47° 00' 17.546"
Longitude: 94° 09' 43.003"

On 6/13/88 found a 1 inch iron monument with brass cap (GLO)
DATE

left monument as found, lowered monument, removed monument (explain)

On _____ placed a _____
DATE

Magnetic Decl: 5° East SKETCH OF REFERENCE TIES All distances are horizontal to nail in side of tree.
Not to Scale



Monument is located in bog 261' south of Forest Service Road #2555A centerline. Steel post stabilizer along side to East.
8' steel sign post S 72 W 5.0'
All trees are painted with red enamel and marked with a 54-3 (bearing tree) tag.

Monument Stamped
S25 | S30
1918

Statement of evidence relative to this corner location is on back of page. 312353

I hereby certify that this survey, plan or report was prepared by me or under my direct supervision and that I am a duly Registered Land Surveyor under the laws of the State of Minnesota.

David S. Landecker
David S. Landecker
Date 5-24-89 Registration No. 17008

OFFICE OF THE COUNTY RECORDER
County of Cass

I hereby certify that this document was filed in the Co. Recorders office at 9:25 A. .M. on the 25 day of May A.D. 19 89
County Recorder Claudine Kayler
By ms, Deputy
DOCUMENT NO. 312353

Statement of Evidence:

East Quarter Corner Section 25, Township 141
North, Range 28 West, Cass County, Minnesota

T-25 141-28
Bk.7 Pg.5

1873 P. H. Conger, U.S. Deputy Surveyor, originally established this corner position while running the East township line of Township 141 North, Range 28 West. The notes indicate a wood post was set to mark the corner position and the following witness: a 4 inch Tamarack North 40 degrees East a distance of 26 links.

1913 County Surveyor's Record Book A pages 564-567 show survey by John Curo. He set a 3 by 3 by 36 inch iron stake proportionally, as original corner was determined lost, and marked new bearing trees: a 30 inch pine stub 42 degrees 45 minutes East a distance of 61.00 feet; and a 40 inch Pine stub South 72 degrees 30 minutes West a distance of 39.90 feet.

1915 County Surveyor's Record Book B page 573 show survey by N.D. Gorman. He set spike proportionally and marked new bearing trees: a 4 inch dead Tamarack North 11 degrees 55 minutes East a distance of 26.45 feet; and a 10 inch Balsam South 18 degrees 35 minutes West a distance of 149.20 feet.

1919 U.S. General Land Office dependant resurvey reestablished this corner proportionally. An iron pipe with a marked brass cap was set to mark the corner. The following bearing trees were marked: a 10 inch Norway Pine South 29 degrees 45 minutes East a distance of 450 links; and a 10 inch Balsam South 46 degrees 15 minutes West a distance of 320 links. Found 2 inch galvanized iron pipe South 6 links.

1969 U.S. Forest Service records show the following: GLO brass cap monument and iron pipe South 3.8 feet and stumps of both 1919 bearing trees. Marked the following bearings: a 6 foot sign post East a distance of 3.0 feet; a 22 inch Norway Pine South 42 degrees West a distance of 167.4 feet; a 6 inch White Oak North 42 degrees West a distance of 246.0 feet; and a 19 inch Norway Pine North 2 degrees West a distance of 207.9 feet.

1971 U.S. Forest Service Surveyor, Bill Okerman, RLS Number 6807, filed corner certificate on February 8, with the Cass County Recorder as certificate Number 696, using the 1969 information.

1986 U.S. Forest Service crews set an aerial target over this corner position for determination of coordinate values through the use of GPS on the Chippewa South Boundary Project Cadastral Survey U.S. Project Number 53-6392-8-219. This target allowed for the search and location of this corner.

1988 on June 13 a Landecker-Stevenson & Associates crew visited the corner and found the following evidence: GLO brass cap monument and County iron pipe South 5.07 feet. Set 8 foot sign post on East side of GLO monument to stabilize. New bearing trees were marked as shown and steel sign post is in place as noted on front of this certificate. Said corner representing the 1918 GLO proportionate position. This corner position fits well with the mathematical location it is intended to represent. It would, therefor, be the opinion of this surveyor that the County pipe has been moved as distances vary between those reported in 1919, 1969 and this date.