

# CERTIFICATE OF LOCATION OF GOVERNMENT CORNER

East Quarter \_\_\_\_\_ Corner of Section 31, Township 141 N, Range 28 W, 5th P.M.

STATE OF MINNESOTA, County of Cass

At the corner location shown on the sketch:

Latitude: 46° 59' 10.904"  
 Longitude: 94° 15' 46.761"

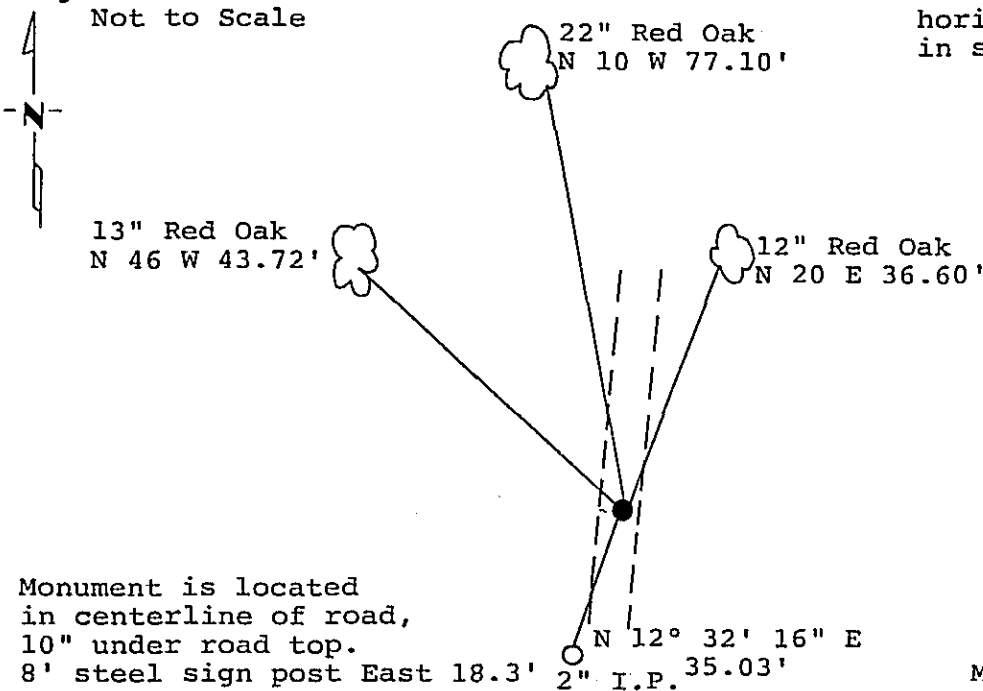
On \_\_\_\_\_ found a \_\_\_\_\_  
DATE

left monument as found,  lowered monument,  removed monument (explain)

On 4/28/89 placed a 2 inch by 24 inch iron pipe with brass cap  
DATE  
and plastic base with magnet.

Magnetic Decl: 5° East SKETCH OF REFERENCE TIES  
 Not to Scale

All distances are horizontal to nail in side of tree.



Monument is located in centerline of road, 10" under road top.

8' steel sign post East 18.3' 2" I.P. 35.03'

Monument Stamped  
 T 141 N R 28 W  
 $\frac{1}{4}$   
 S31+S32  
 1989  
 RLS 17008

All trees are painted with red enamel and marked with a 54-3 (bearing tree) tag.

Statement of evidence relative to this corner location is on back of page. 312351

I hereby certify that this survey, plan or report was prepared by me or under my direct supervision and that I am a duly Registered Land Surveyor under the laws of the State of Minnesota

David S. Landecker  
 David S. Landecker

Date 5-24-89 Registration No. 17008

OFFICE OF THE COUNTY RECORDER

County of Cass

I hereby certify that this document was filed in the Co. Recorders office at 9:15 A. .M. on the 25 day of May A.D., 1989

County Recorder Claudine Kayler  
 By ms, Deputy

DOCUMENT NO. 312351

East Quarter Corner Section 31, Township 141  
Statement of Evidence: North, Range 28 West, Cass County, Minnesota

X-5 141-28  
Bk.7 Pg.36

1874 P. H. Conger, U.S. Deputy Surveyor, originally established this corner position while subdividing Township 141 North, Range 28 West. The notes indicate a wood post was set to mark the corner position and the following witnesses: no bearing trees marked; corner in Tamarack bog.

1916 County Surveyor's Record Book B pages 384-390 show survey by E.B. Horst. He set a 2 inch by 48 inch galvanized iron pipe with cap proportionally.

1918 U.S. General Land Office survey double proportioned the position for the Northeast corner of Section 31. They did not, however, find or monument this corner position.

1919 County Surveyor's Record Book C page 210 show survey by E.B. Horst. He found a 2 inch by 48 inch iron pipe previously set.

Numerous local surveyors have used the monument as established by Horst in 1916.

1984 Cass County Surveyor's Office found Horst 2 inch iron pipe up 1.2 feet, 20 feet west of centerline of trail, new bearing trees were marked: a 17 inch Red Oak North 29 degrees West a distance of 49.40 feet; and a Twin 6 inch and 7 inch Maple South 69 degrees West a distance of 36.91 feet.

1986 U.S. Forest Service crews set an aerial target in the vicinity of this corner for the search and establishment of the true corner position. The target having coordinate values through the use of GPS on the Chippewa South Boundary Project Cadastral Survey U.S. Project Number 53-6392-8-219. This target allowed for the search and location of this corner.

1988 a Landecker-Stevenson & Associates crew visited the corner and found the following evidence: the County survey 2 inch iron pipe; no other evidence of original survey corner; 1984 Twin Maple down; 17 inch Red Oak in good shape.

1989 on March 28 a Landecker-Stevenson & Associates crew set a 2 inch by 24 inch iron pipe with brass cap and plastic base with magnet. This position was determined lost and reestablished by single proportionate measurements between the Northeast and Southeast corner of said Section 31. New bearing trees were marked as shown and a steel sign post is in place as noted on front of this certificate. During the process of this survey, Landecker-Stevenson & Assoc. determined that the 1918 GLO survey positions monumented in Sections 29, 30, 31 and 32 fit the double proportion position established from the same controlling corners used by GLO and the County. The GLO double proportionate measurement was done utilizing the latitudinal and longitudinal method, for the section corner in Carnahan Lake, whereas the County used a proportion method (untraceable). Therefore, Landecker-Stevenson & Assoc. accepts the 1918 GLO method and corner positions. In this case, the GLO did not monument this position, however, the County position is shown for reference purposes. The County monument was not accepted.