

# CERTIFICATE OF LOCATION OF GOVERNMENT CORNER

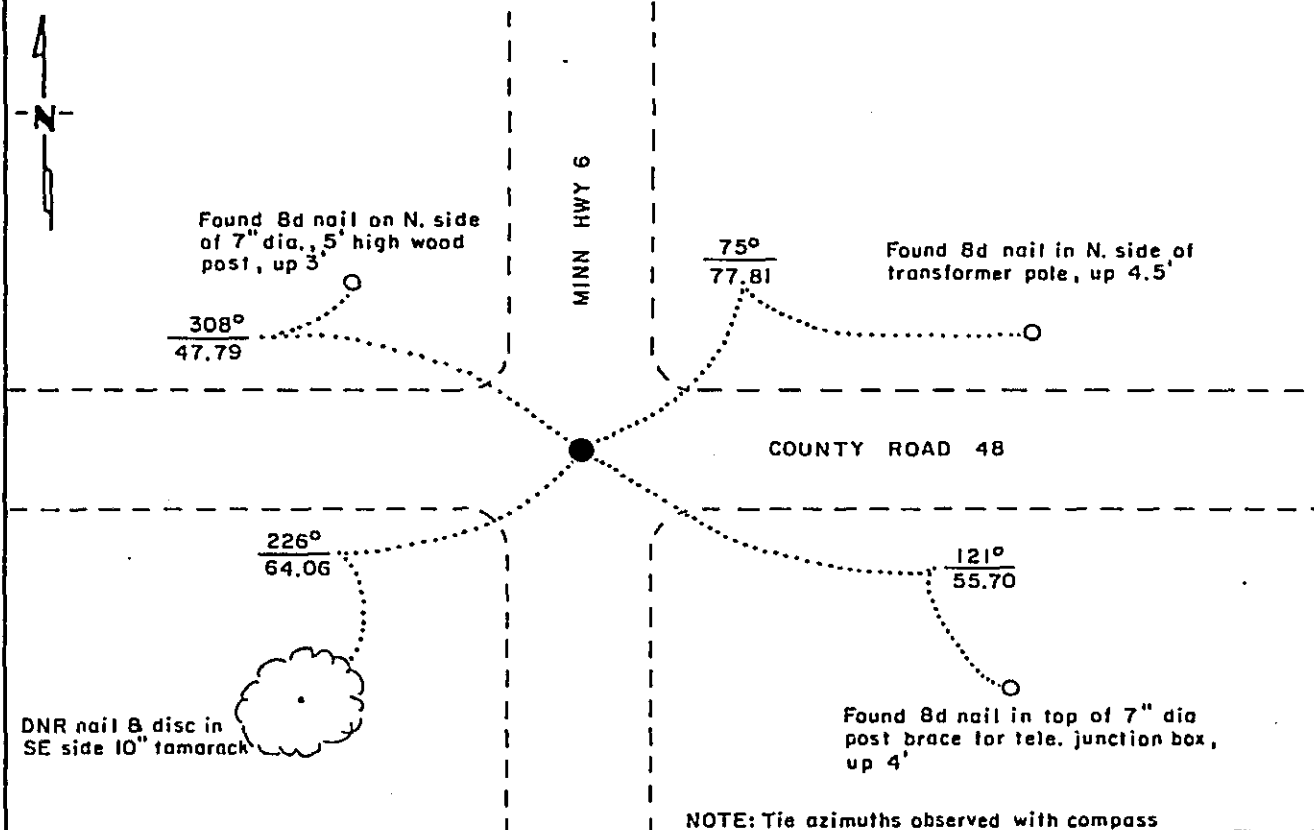
**NORTHEAST** Corner of Section 22, Township 139N., Range 26 W., 5<sup>th</sup> P.M.

STATE OF MINNESOTA, County of CASS

At the corner location shown on the sketch:

- On 1/25/1988 found a Railroad spike at intersection of roads,  
flush with surface.  
  - left monument as found,  lowered monument,  removed monument (explain)
- On \_\_\_\_\_ placed a \_\_\_\_\_  
DATE

## SKETCH OF REFERENCE TIES



Statement of evidence relative to this corner location is on back of page. D.A.E. 3/13/89  
FILE: F-761

I hereby certify that this document and the data contained herein was prepared by me or under my direct supervision.

John D. Walker 3-14-89  
Registration No. 16098  
 Land Surveyor,  Professional Engineer  
 County Surveyor,  County Engineer

OFFICE OF THE COUNTY RECORDER  
County of Cass

I hereby certify that this document was filed in the Co. Recorders office at 1:16 P.M. on the 22 day of May A.D. 1988  
County Recorder Clarence R. Taylor  
By MS, Deputy  
DOCUMENT NO. 312283

Northeast Corner of Section 22, Township 139 North, Range 26 West

The following offices were contacted for information concerning this corner:

MN Secretary of State  
Cass County Surveyor  
Mn/DNR Washburn Forestry Station

- 1863 This corner was established by the U.S. General Land Office, marked with a wood post and witnessed by:  
6" Tamarack, N. 77° W., 15.18 feet (23 links)  
6" Tamarack, N. 8° W., 7.26 feet (11 links)  
6" Tamarack, S. 68° E., 13.86 feet (21 links)  
8" White Pine, S. 50° W., 18.48 feet (28 links)
- 1909 Book "A", page 394, records that John Curo "found the old government stake point, down in the marsh." He also found the original White Pine B.T. and the Tamarack B.T. northeast. His survey shows a distance of 5257.33 feet to the section corner north.
- 1937 C.C.C. records show that the section corner was in place in the road.
- No Date The alignment map for Minn. Highway 6 shows the corner to be at the intersection of roads.
- 1988 The DNR Bureau of Engineering searched for the corner. A railroad spike was found at the intersection of Minn. Highway 6 and County Road #48. This point proved to be 5261.54 feet to the section corner north.

The railroad spike was accepted as marking the corner.