

# CERTIFICATE OF LOCATION OF GOVERNMENT CORNER

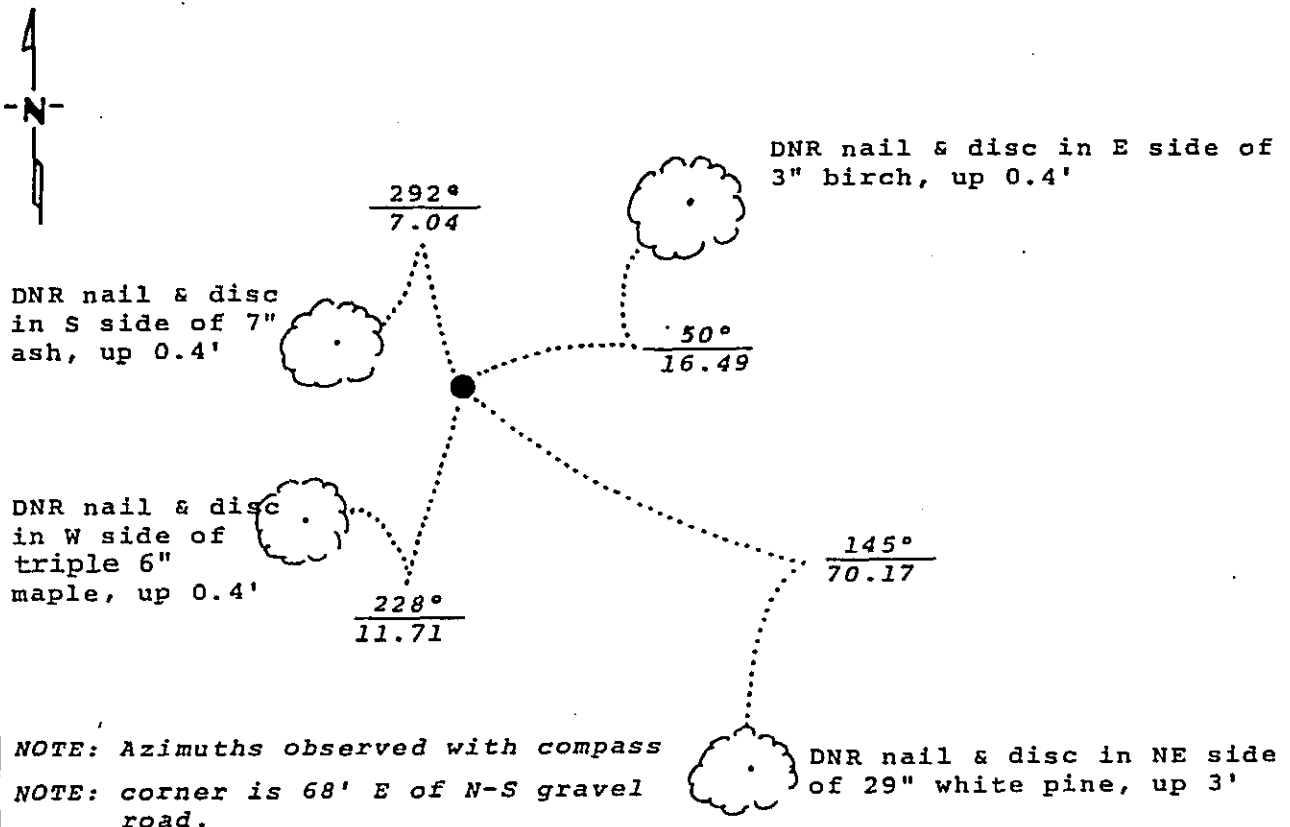
East Quarter \_\_\_\_\_ Corner of Section 9, Township 139 N., Range 26 W., 5th P.M.

STATE OF MINNESOTA, County of Cass

At the corner location shown on the sketch:

- On \_\_\_\_\_ found a \_\_\_\_\_  
DATE
- left monument as found,  lowered monument,  removed monument (explain)
- On 4/25/88 placed a 1 1/2" x 4' iron pipe with a square  
DATE  
aluminum cap, up 0.8', in swamp.

## SKETCH OF REFERENCE TIES



Statement of evidence relative to this corner location is on back of page. D.A.E. 6/16/88  
File: E 761

I hereby certify that this document and the data contained herein was prepared by me or under my direct supervision.

John D. Walker 3-14-89  
Registration No. 16098  
 Land Surveyor,  Professional Engineer  
 County Surveyor,  County Engineer

312277

OFFICE OF THE COUNTY RECORDER  
County of Cass

I hereby certify that this document was filed in the Co. Recorders office at 3:45 P.M. on the 22 day of May A.D., 19 89

By Clara Kaye, Deputy  
DOCUMENT NO. 312277

East Quarter Corner of Section 9, Township 139 North, Range 26 West

The following offices were contacted for information concerning this corner:

MN Secretary of State  
Cass County Surveyor  
Mn/DNR Washburn Forestry Station

- 1863 This corner was established by the U.S. General Land Office, marked with a wood post and witnessed by two bearing trees.
- 1957 Dean Anderson platted part of Government Lots 2, 3, and 4 of Section 9 as "Sabin's Eastburn Addition". He shows corner monuments at the southeast corner of Section 9 and the sixteenth corner north of the east quarter corner. A straight line and a distance of 3982.2 feet is shown between the monuments.
- 1988 The DNR Bureau of Engineering searched for, but did not find any evidence of the original corner or its accessories. The section corner and the sixteenth corner monuments as shown on "Sabin's Eastburn Addition" were found. The sixteenth corner was 1 foot east of a line from section corner to section corner and 3969.67 feet north of the southeast corner.

The corner was considered lost. The Bureau of Engineering re-established the corner midway and on line between the section corners. A 1½" x 4' iron pipe was set to perpetuate the corner location.