

CERTIFICATE OF LOCATION OF GOVERNMENT CORNER

Number 3 Meander Corner of Section 33, Township 141 N, Range 29 W, 5th P.M.

STATE OF MINNESOTA, County of Cass

At the corner location shown on the sketch: Latitude: 46° 58' 46.474"
 Longitude: 94° 21' 01.521"

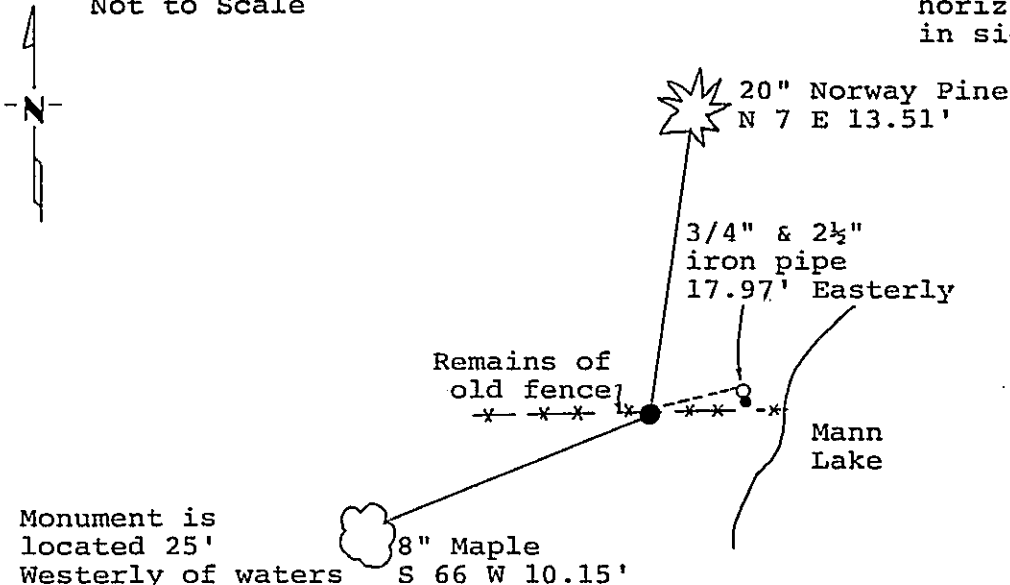
On _____ found a _____
DATE

left monument as found, lowered monument, removed monument (explain)

On 4/6/89 placed a 2 inch by 48 inch iron pipe with brass cap
 and ^{DATE}plastic base with magnet.

Magnetic Decl: 5° East SKETCH OF REFERENCE TIES
 Not to Scale

All distances are horizontal to nail in side of tree.



Monument is located 25' Westerly of waters edge & 0.5' South of old rebuilt fence.
 8" steel sign post West 4.0'

Monument Stamped
 R29W
 T141N S 33 / MC
 T140N S 4
 1989
 RLS 17008

All trees are painted with red enamel and marked with a 54-3 (bearing tree) tag.

Statement of evidence relative to this corner location is on back of page.

312160

I hereby certify that this survey, plan or report was prepared by me or under my direct supervision and that I am a duly Registered Land Surveyor under the laws of the State of Minnesota.

David S. Landecker
 David S. Landecker
 Date 5-12-89 Registration No. 17008

OFFICE OF THE COUNTY RECORDER

County of Cass

I hereby certify that this document was filed in the Co. Recorders office at 4:10 P. M. on the 15 day of May A.D., 1989

County Recorder Claudine Kaye

By MS, Deputy

DOCUMENT NO. 312160

Statement of Evidence:

Meander Corner Number 3 Section 33, Township
141 North, Range 29 West, Cass County,
Minnesota

Z11-12 141-29
Bk.6 Pg.28

1863 Johnson and Thornton, U.S. Deputy Surveyors, originally established this corner position while running the 10th Standard Parallel. The notes indicate a wood post was set to mark the corner position and the following witnesses: a 6 inch White Birch North 56 degrees West a distance of 20 links; and a 6 inch Aspen South 19 degrees East a distance of 17 links.

1964 U.S. Forest Service records show the following: technician Ekstrom searched for corner, but found no evidence.

1966 R.F. Schneider, Registered Land Surveyor Number 5740, establishes a 2 inch iron pipe on the Westerly shore of Mann Lake for purposes of description writing. His survey and notes do not purport this to be the meander corner.

1975 Myron Landecker, Registered Land Surveyor Number 7452. Plat of HOLIDAY SHORES. Plat shows a 3/4 inch iron pipe and a 2 and 1/2 inch iron pipe set.

1986 U.S. Forest Service crews set an aerial target in the vicinity of this corner for the search and establishment of the true corner position. The target having coordinate values through the use of GPS on the Chippewa South Boundary Project Cadastral Survey U.S. Project Number 53-6392-8-219. This target allowed for the search and location of this corner.

1988 a Landecker-Stevenson & Associates crew searched for the corner. The following information was found and noted: found both pipe set by Schneider and Landecker and searched from their iron pipe. Distance falls on rock pile; no evidence of original bearing trees. Corner determined lost.

1989 on April 6 a Landecker-Stevenson & Associates crew set a 2 inch by 48 inch iron pipe with brass cap and plastic base with magnet. This corner was established at the lost, single proportionate position on the arc of the Tenth Standard Parallel between the Southwest corner of Section 33 and Meander Corner Number 1 on the East shore of Mann Lake and South line of Section 34. New bearing trees were marked as shown and a steel sign post was set as noted on front of this certificate.