

CERTIFICATE OF LOCATION OF GOVERNMENT CORNER

Number 7 Meander Corner of Sections 34/35, Township 141 N, Range 29 W, 5th P.M.

STATE OF MINNESOTA, County of Cass

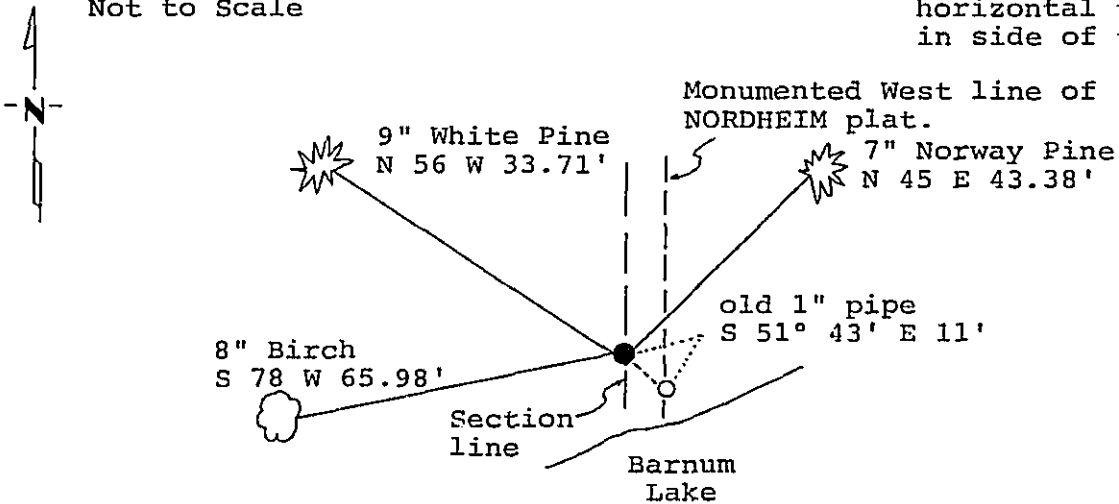
At the corner location shown on the sketch:

Latitude: 46° 58' 52.888"
 Longitude: 94° 23' 10.827"

- On _____ found a _____
DATE
- left monument as found, lowered monument, removed monument (explain)
- On 1/20/89 placed a 2" by 48" iron pipe with brass cap, plastic
DATE
base and magnet.

Magnetic Decl: 5° East SKETCH OF REFERENCE TIES
 Not to Scale

All distances are horizontal to nail in side of tree.



Monument is located
 21'± Northerly of
 Barnum Lake.
 8' steel sign post South 5.0'

Monument Stamped
 T 141 N R 29 W
 S34+S35
 MC
 1989
 RLS 17008
311949

All trees are painted with red enamel and marked with a 54-3 (bearing tree) tag.

Statement of evidence relative to this corner location is on back of page.

I hereby certify that this survey, plan or report was prepared by me or under my direct supervision and that I am a duly Registered Land Surveyor under the laws of the State of Minnesota.

David S. Landecker
 David S. Landecker
 Date 5-1-89 Registration No. 17008

OFFICE OF THE COUNTY RECORDER

County of Cass

I hereby certify that this document was filed in the Co. Recorders office at 10:05 A. A.M. on the 9 day of May A.D., 1989

County Recorder Claudia Kuyler

By MS, Deputy

DOCUMENT NO. 311949

Statement of Evidence:

Meander Corner Number 7 Section 34, Township 141
North, Range 29 West, Cass County, Minnesota

YZ-17 141-29
Bk.6 Pg.44

1873 P. H. Conger, U.S. Deputy Surveyor, originally established this corner position while subdividing Township 141 North, Range 29 West. The notes indicate a wood post was set to mark the corner position and the following witnesses: an 18 inch Yellow Pine North 66 degrees East a distance of 7 links; and a 10 inch Yellow Pine North 67 degrees West a distance of 13 links.

1918 U.S. General Land Office dependant resurvey found the corner marked by 3 inch wood stake and stumps of the two original bearing trees.

1965 U.S. Forest Service records show the following: technician Ekstrom found two old stumps that check close for bearing and distance. No evidence of scribe marks.

1974 Myron Landecker, Registered Land Surveyor Number 7452, set iron pipe at shore in survey of line between Sections 34 and 35. Original corner not found in this survey.

1977 Bruce R. Buxton, Registered Land Surveyor Number 11309, surveyed plat of NORDHEIM, in Section 35. Found 1 inch iron pipe established by Landecker and used in his survey.

1986 U.S. Forest Service crews set an aerial target in the vicinity of this corner for the search and establishment of the true corner position. The target having coordinate values through the use of GPS on the Chippewa South Boundary Project Cadastral Survey U.S. Project Number 53-6392-8-219. This target allowed for the search and location of this corner.

1988 a Landecker-Stevenson & Associates crew searched for the corner. The position for the meander corner was mathematically determined from the notes of the 1918 U.S. GLO resurvey. When this position was staked and located on the ground it allowed for the recovery of the original Northeast bearing tree stump. The corner position was then set at its obliterated position using the original bearing tree stump.

1989 on January 20 a Landecker-Stevenson & Associates crew set a 2 inch by 48 inch iron pipe with brass cap, plastic base and magnet from the found original bearing tree stump. New bearing trees were marked as shown and a steel sign post set as noted on front of this certificate. The Landecker/Buxton pipe is South 51 degrees 43 minutes East a distance of 11 feet.