

CERTIFICATE OF LOCATION OF GOVERNMENT CORNER

NORTH QUARTER Corner of Section 33, Township 141N, Range 28W, 5th P.M.

STATE OF MINNESOTA, County of CASS

At the corner location shown on the sketch: Latitude: 46° 59' 35.461"
 Longitude: 94° 14' 13.487"

On 6-16-88 found a 1" iron monument with brass cap (GLO)
DATE

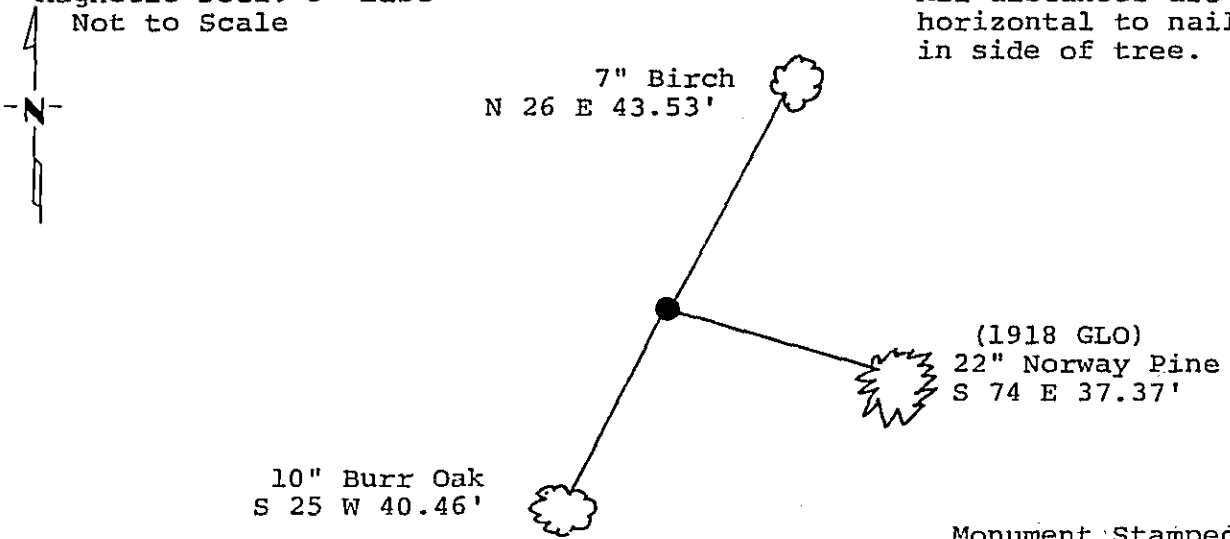
left monument as found, lowered monument, removed monument (explain)

On _____ placed a _____
DATE

Magnetic Decl: 5° East
 Not to Scale

SKETCH OF REFERENCE TIES

All distances are horizontal to nail in side of tree.



Monument Stamped

Monument is located
 90' south of County
 Road #5 center line
 Sign post north 5.0'
 sign post west 5.0'

S 28
1/4 ——— S 33
1918

All trees are painted with red enamel and marked with a 54-3 (Bearing Tree) tag.

Statement of evidence relative to this corner location is on back of page.

I hereby certify that this survey, plan or report was prepared by me or under my direct supervision and that I am a duly Registered Land Surveyor under the laws of the State of Minnesota.

David S. Landecker
 David S. Landecker
 Date 3/31/89 Registration No. 17008

311162
 OFFICE OF THE COUNTY RECORDER
 County of Cass

I hereby certify that this document was filed in the Co. Recorders office at 11:20 A .M. on the 3rd day of April A.D., 1989

County Recorder Claudine Kaylor
 By DJK, Deputy
 DOCUMENT NO. 311162

Statement of Evidence:

North Quarter Corner Section 33, Township 141
North, Range 28 West, Cass County, Minnesota

V-11 141-28
Bk.7 Pg.6

1874 P. H. Conger, U.S. Deputy Surveyor, originally established this corner position while subdividing Township 141 North, Range 28 West. The notes indicate a wood post was set to mark the corner position and the following witnesses: an 18 inch White Pine North 70 degrees East a distance of 104 links.

1918 U.S. General Land Office dependent resurvey did not find the original corner and reestablished this corner proportionally as lost. A 1 by 36 inch iron pipe with brass cap was set to mark the corner. The following bearing trees were marked: a 6 inch Norway Pine South 74 degrees East a distance of 56 links; and an 8 inch Poplar North 38 and 1/2 degrees West a distance of 28 links.

1962 U.S. Forest Service records show the following: found 1918 GLO brass cap monument and 1918 Pine bearing tree South 74 degrees East a distance of 37.0 feet. Set 6 foot post North 4.6 feet. Marked new bearing trees: an 18 inch Red Pine South 74 degrees East a distance of 37.0 feet (GLO); and a 10 inch Oak North 5 and 1/2 degrees East a distance of 58.9 feet.

1964 U.S. Forest Service Surveyor, Bill Okerman, Registered Land Surveyor Number 6807, filed corner certificate on October 20, with the Cass County Recorder as certificate Number 310, using the 1962 information.

1968 County Highway Department information shows: found brass cap monument in place (GLO).

1983 County Surveyor's Record,s show the following information: find brass cap monument and Southeast General Land Office bearing tree.

1986 U.S. Forest Service crews set an aerial target over this corner position for determination of coordinate values through the use of GPS on the Chippewa South Boundary Project Cadastral Survey U.S. Project Number 53-6392-8-219. This target allowed for the search and location of this corner.

1988 on June 16 a Landecker-Stevenson & Associates crew visited the corner and found the following evidence: General Land Office brass cap in good condition and 1918 bearing tree is now a 22 inch Norway Pine South 74 degrees East a distance of 37.37 feet. New bearing trees were marked as shown and steel sign posts are in place as noted on front of this certificate.