

CERTIFICATE OF LOCATION OF GOVERNMENT CORNER

Witness Point West
of Meander

Corner of Sections 27/34, Township 141 N, Range 30 W, 5th P.M.

STATE OF MINNESOTA, County of Cass

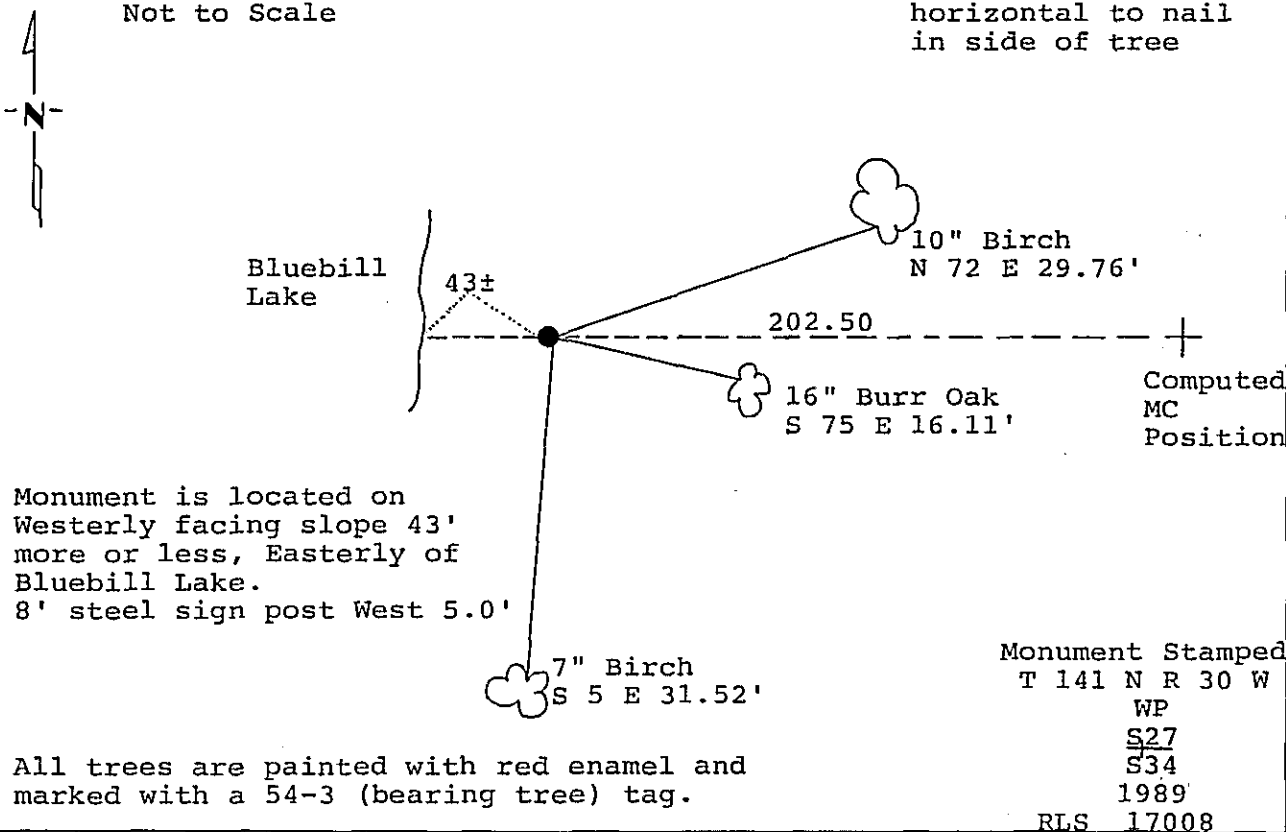
At the corner location shown on the sketch:

Latitude: 46° 59' 38.575"
Longitude: 94° 27' 33.507"

- On _____ found a _____
DATE
- left monument as found, lowered monument, removed monument (explain)
- On 1/25/89 placed a 2 inch by 48 inch iron pipe with brass cap,
DATE plastic base and magnet West of Corner position.

Magnetic Decl: 5° East SKETCH OF REFERENCE TIES
Not to Scale

All distances are horizontal to nail in side of tree



Statement of evidence relative to this corner location is on back of page.

310 879

I hereby certify that this survey, plan or report was prepared by me or under my direct supervision and that I am a duly Registered Land Surveyor under the laws of the State of Minnesota.

David S. Landecker
Date: 3/10/89 Registration No. 17008

OFFICE OF THE COUNTY RECORDER
County of Cass

I hereby certify that this document was filed in the Co. Recorders office at 3:35 P. M. on the 14 day of March A.D., 19 89
County Recorder Cloudina Kayler
By MS, Deputy
DOCUMENT NO. 310 879

Statement of Evidence:

Meander Corner Number 7, Section 27, Township
141 North, Range 30 West, Cass County,
Minnesota

V15-16 141-30
Bk.5 Pg.64

1873 P. H. Conger, U.S. Deputy Surveyor, originally established this corner position while subdividing Township 141 North, Range 30 West. The notes indicate a wood post was set to mark the corner position and the following witnesses: a 24 inch White Pine North 70 degrees East a distance of 103 links; and an 8 inch Oak South 10 degrees East a distance of 97 links.

1964 U.S. Forest Service technician Ekstrom found a 36 inch White Pine with Civilian Conservation Corps tag on tree.

1986 U.S. Forest Service crews set an aerial target in the vicinity of this corner for the search and establishment of the true corner position. The target having coordinate values through the use of GPS on the Chippewa South Boundary Project Cadastral Survey U.S. Project Number 53-6392-8-219. This target allowed for the search and location of this corner.

1988 on September 23 a Landecker-Stevenson & Associates crew searched for the corner. The following information was found and noted: a 40 inch White Pine that had been cut into, no evidence of blazing or of any other original evidence. Corner determined lost.

1989 The single proportion lost position for the Meander Corner falls 245 feet, more or less, Easterly of the waters edge of Bluebill Lake. Since this position for the Meander Corner would fall so far from the lake, a witness point was set near the shore, as noted on this certificate.

Set was a 2 inch by 48 inch iron pipe with brass cap, plastic base and magnet at a distance of 202.50 feet West of the true computed Meander Corner position. New bearing trees were marked as shown and steel sign post was set as noted on front of this certificate.