

CERTIFICATE OF LOCATION OF GOVERNMENT CORNER

Northeast Corner of Section 34, Township 141 N, Range 30 W, 5th P.M.

STATE OF MINNESOTA, County of Cass

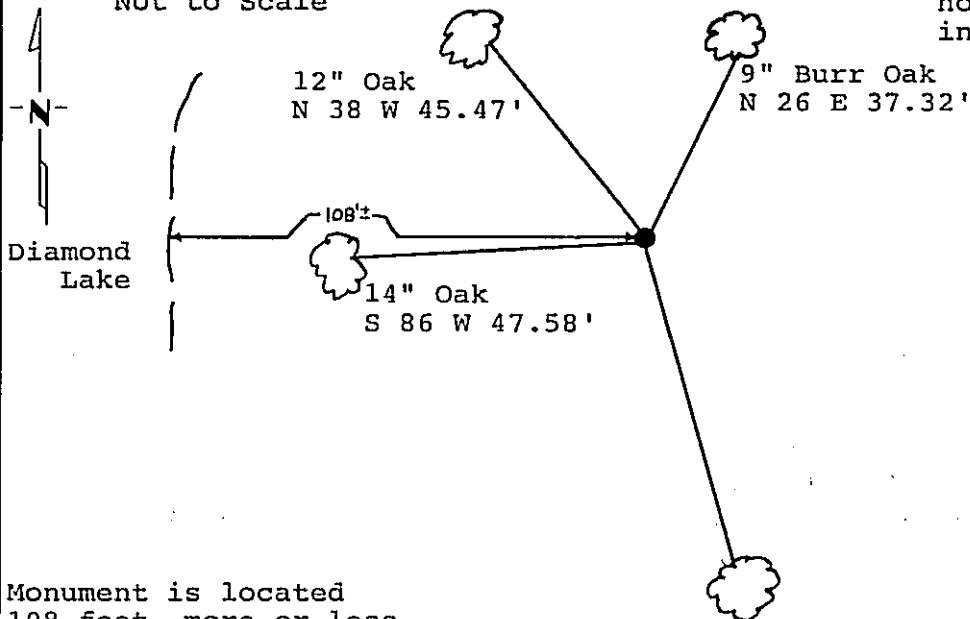
At the corner location shown on the sketch: Latitude: 46° 59' 38.977"
 Longitude: 94° 26' 59.090"

On 8/30/88 found a 2 inch Iron Monument with Brass Cap.
DATE

left monument as found, lowered monument, removed monument (explain)

On _____ placed a _____
DATE

Magnetic Decl: 5° East SKETCH OF REFERENCE TIES All distances are horizontal to nail in side of tree.
 Not to Scale



Monument is located 108 feet, more or less, East of shore of Diamond Lake, line to standard to the East.

6 foot sign post 7.7 feet East.
 8 foot sign post 5.0 feet West.
 All trees are painted with red enamel and marked with a 54-3 (bearing tree) tag.

8" Birch
 S 14 E 65.25'

Monument Stamped

T 141 N R 30 W
 S 27 | S 26
 S 34 | S 35
 1965

RLS No. 6807

Statement of evidence relative to this corner location is on back of page. 310877

I hereby certify that this survey, plan or report was prepared by me or under my direct supervision and that I am a duly Registered Land Surveyor under the laws of the State of Minnesota.

David S. Landecker
 David S. Landecker
 Date 3/10/89 Registration No. 17008

OFFICE OF THE COUNTY RECORDER
 County of Cass

I hereby certify that this document was filed in the Co. Recorders office at 3:20 P. M. on the 14 day of March A.D., 1989

County Recorder Clouline Kaylor
 By MS Deputy

DOCUMENT NO. 310877

Statement of Evidence:

Northeast Corner Section 34, Township 141 North,
Range 30 West, Cass County, Minnesota

V-17 141-30
Bk.5 Pg.60

1873 P. H. Conger, U.S. Deputy Surveyor, originally established this corner position while subdividing Township 141 North, Range 30 West. The notes indicate a wood post was set to mark the corner position and the following witnesses: a 13 inch Yellow Pine South 45 degrees East a distance of 46 links; a 14 inch Yellow Pine North 70 degrees East a distance of 49 links; a 9 inch Yellow Pine North 81 and 1/2 degrees West a distance of 44 links; and a 16 inch Yellow Pine South 41 degrees West a distance of 98 links.

1937 Civilian Conservation Corps found 1 and 1/2 inch iron pipe, 20 inches above ground.

1965 U.S. Forest Service technician Ekstrom found a 2 inch iron pipe and burned Pine stumps of all original bearing trees. He set a 2 inch by 5 foot long iron pipe with a 3 inch bronze tablet. New bearing trees were marked: an 8 inch Jack Pine North 53 degrees West a distance of 20.3 feet; a 15 inch Jack Pine North 22 degrees West a distance of 58.3 feet; a 5 inch Elm North 62 degrees East a distance of 18.6 feet; and a 6 inch Oak South 12 degrees East a distance of 6.1 feet. A 6 foot sign post was set due East 7.6 feet.

1970 U.S. Forest Service Surveyor Bill Okerman, Registered Land Surveyor Number 6807, filed corner certificate using 1965 information.

1986 U.S. Forest Service records show the following: found the corner monumented with a Forest Service iron pipe and a 1 and 1/2 inch County iron alongside Southwest. The following bearing trees were found: a 10 inch Jack Pine North 53 degrees West a distance of 20.3 feet; a 15 inch Jack Pine stub 6 feet high; a 11 inch Elm North 62 degrees East a distance of 18.6 feet; and a 11 inch White Oak South 12 degrees East a distance of 6.1 feet.

1986 U.S. Forest Service crews set an aerial target over this corner position for determination of coordinate values through the use of GPS on the Chippewa South Boundary Project Cadastral Survey U.S. Project Number 53-6392-8-219. This target allowed for the search and location of this corner. All of the 1965 bearing trees were cut off.

1988 on August 30 a Landecker-Stevenson & Associates crew visited the corner and found the following evidence: the 1965 USFS 2 inch iron pipe with brass cap up 17 inches with a 1 and 1/2 inch iron pipe alongside Southwesterly, 108 feet, more or less, East of shore of Diamond Lake. Line to standard runs Easterly from corner. New bearing trees were marked as shown and steel sign posts are in place as noted on front of this certificate.