

# CERTIFICATE OF LOCATION OF GOVERNMENT CORNER

East Quarter \_\_\_\_\_ Corner of Section 28, Township 141 N, Range 30 W, 5th P.M.

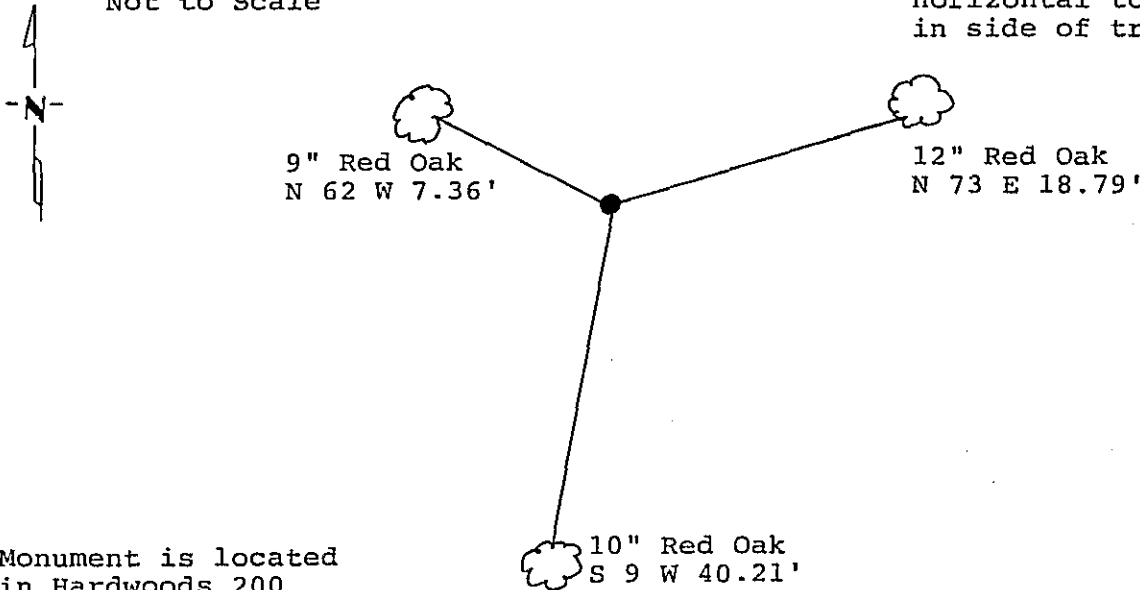
STATE OF MINNESOTA, County of Cass

At the corner location shown on the sketch: Latitude: 47° 00' 04.461"  
 Longitude: 94° 28' 15.304"

- On \_\_\_\_\_ found a \_\_\_\_\_  
DATE
- left monument as found,  lowered monument,  removed monument (explain)
- On 10/12/88 placed a 2 inch by 48 inch iron pipe with brass cap.  
DATE

Magnetic Decl: 5° East SKETCH OF REFERENCE TIES  
 Not to Scale

All distances are horizontal to nail in side of tree.



Monument is located in Hardwoods 200 feet, more or less, westerly of Aspen regeneration and 1000 feet, more or less, southerly of North Country Trail. 8' Sign post North 5.0'

All trees are painted with red enamel and marked with a 54-3 (Bearing Tree) tag.

Monument Stamped  
 T 141 N R 30 W  
 S28 | S27  
 1988  
 RLS 17008

Statement of evidence relative to this corner location is on back of page.

310872

I hereby certify that this survey, plan or report was prepared by me or under my direct supervision and that I am a duly Registered Land Surveyor under the laws of the State of Minnesota.

David S. Landecker  
 David S. Landecker  
 Date 3/10/89 Registration No. 17008

OFFICE OF THE COUNTY RECORDER

County of Cass

I hereby certify that this document was filed in the Co. Recorders office at 2:35 P.M. on the 14 day of March, A.D., 1989

County Recorder Clouline Kayler

By MS, Deputy

DOCUMENT NO. 310872

Statement of Evidence:

East Quarter Corner Section 28, Township 141  
North, Range 30 West, Cass County, Minnesota

T-13 141-30  
Bk.5 Pg.53

1873 P. H. Conger, U.S. Deputy Surveyor, originally established this corner position while subdividing Township 141 North, Range 30 West. The notes indicate a wood post was set to mark the corner position and the following witnesses: a 10 inch White Pine South 82 degrees West a distance of 22 links; and a 12 inch White Pine South 77 degrees East a distance of 30 links.

1965 U.S. Forest Service notes show the following: technician Ekstrom searched for the corner, but found no evidence.

1986 U.S. Forest Service crews set an aerial target in the vicinity of this corner for the search and establishment of the true corner position. The target having coordinate values through the use of GPS on the Chippewa South Boundary Project Cadastral Survey U.S. Project Number 53-6392-8-219. This target allowed for the search and location of this corner.

1988 on September 23 a Landecker-Stevenson & Associates crew searched for the corner. The following information was found and noted: many burnt pine stumps in vicinity, but no evidence of scribing or of original post or accessories.

1988 on October 12 a Landecker-Stevenson & Associates crew set a 2 inch by 48 inch iron pipe with brass cap and plastic base with magnet at the lost, single proportion position between the Northeast and Southeast Corners of Section 28. New bearing trees were marked as shown and steel sign post set as noted on front of this certificate.