

CERTIFICATE OF LOCATION OF GOVERNMENT CORNER

NORTH QUARTER Corner of Section 26, Township 141 N, Range 29 W, 5th P.M.

STATE OF MINNESOTA, County of CASS

At the corner location shown on the sketch: Latitude: 47° 00' 33.710"
 Longitude: 94° 18' 53.511"

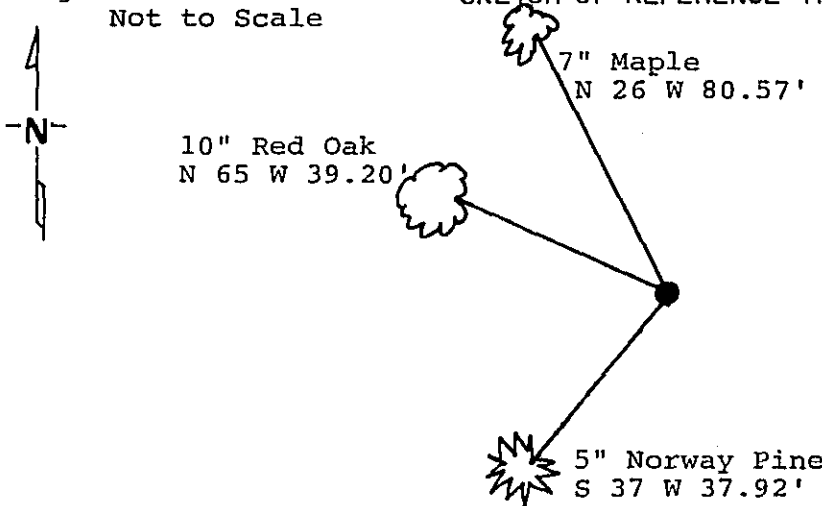
On 6/7/88 found a 1 inch iron monument with a brass cap
DATE

left monument as found, lowered monument, removed monument (explain)

On _____ placed a _____
DATE

Magnetic Decl: 5° East SKETCH OF REFERENCE TIES
 Not to Scale

All distances are horizontal to nail in side of tree



Monument is located 150' more or less west of north-south trail. Plantation is south-westerly from corner. 8' sign post south 5.0' 8' sign post west 5.0'

Monument Stamped

S 23
S 26

1918

All trees are painted with red enamel and marked with a 54-3 (Bearing Tree) tag.

Statement of evidence relative to this corner location is on back of page. 310671

I hereby certify that this document and the data contained herein was prepared by me or under my direct supervision.

OFFICE OF THE REGISTER OF DEEDS
 County of Cass

Samuel A. Rudin 2/28/89
SIGNATURE DATE

I hereby certify that this document was filed in the Reg. of Deeds office at 2:45 P.M. on the 1 day of March A.D., 1989

Registration No. 17008

Register of Deeds Claudine Kayler
 By ms, Deputy

- Land Surveyor, Professional Engineer
 County Surveyor, County Engineer

DOCUMENT NO. 310671

Statement of Evidence:

North Quarter Corner Section 26, Township 141
North, Range 29 West, Cass County, Minnesota

R-19 141-29
Bk.4 Pg.40

1873 P. H. Conger, U.S. Deputy Surveyor, originally established this corner position while subdividing Township 141 North, Range 29 West. The notes indicate a wood post was set to mark the corner position and the following witnesses: a 10 inch Norway Pine North a distance of 8 links; and a 10 inch Norway Pine South a distance of 7 links.

1918 U.S. General Land Office dependant resurvey found the corner marked by both original bearing tree stumps. A 1 inch by 36 inch iron pipe with a marked brass cap was set to mark the corner. The following bearing trees were marked: a 6 inch Jack Pine North 26 degrees 15 minutes East a distance of 38 links; and a 6 inch Jack Pine South 46 degrees 45 minutes West a distance of 133 links.

1986 Cass County Surveyor records show the following: Cass County Survey Technician and Cass County Forester found brass cap and original Pine stump South. Ties marked: a 7 inch and a 10 inch Twin Red Oak North 66 degrees West a distance of 6.70 feet; an 11 inch Red Oak South 23 degrees East a distance of 18.90 feet; and a 15 inch Red Oak North 79 degrees East a distance of 26.80 feet.

1986 U.S. Forest Service crews set an aerial target over this corner position for determination of coordinate values through the use of GPS on the Chippewa South Boundary Project Cadastral Survey U.S. Project Number 53-6392-8-219. This target allowed for the search and location of this corner. The original South bearing tree and the 1986 bearing trees were cut off.

1988 on June 7 a Landecker-Stevenson & Associates crew visited the corner and found the following evidence: a 1 inch General Land Office brass cap in good condition; original bearing tree stump and 1986 County ties are cut off. 3 new bearing trees were marked and steel sign posts set as shown on front of this certificate.