

CERTIFICATE OF LOCATION OF GOVERNMENT CORNER

NORTHEAST Corner of Section 27, Township 141 N, Range 29 W, 5th P.M.

STATE OF MINNESOTA, County of CASS

At the corner location shown on the sketch: Latitude: 47° 00' 34.082"
 Longitude: 94° 19' 39.562"

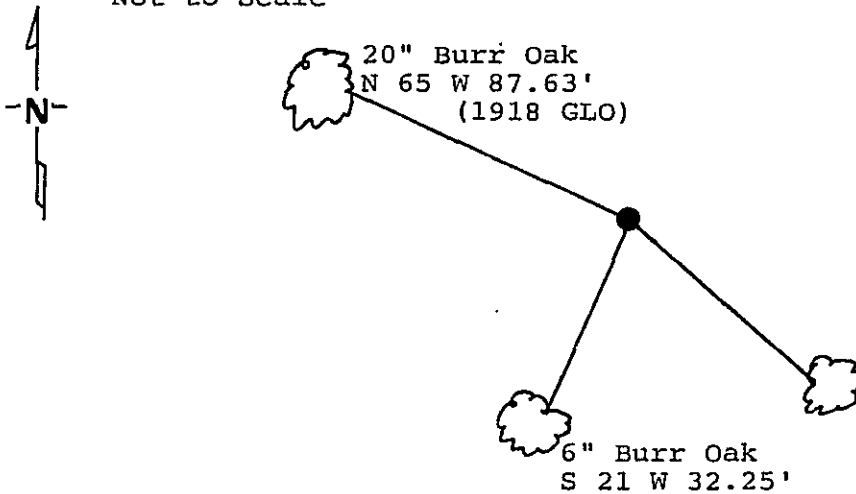
On 6/10/88 found a 2" iron monument with a brass cap
DATE

left monument as found, lowered monument, removed monument (explain)

On _____ placed a _____
DATE

Magnetic Decl: 5° East SKETCH OF REFERENCE TIES
 Not to Scale

All distances are horizontal to nail in side of tree



12" Burr Oak
 S 46 E 57.70'

6" Burr Oak
 S 21 W 32.25'

Monument is located in hardwood stand, swamps east and west of corner, line to standard northerly.
 6' sign post north 4.9'
 8' sign post east 4.0'
 8' sign post north 3.85'

All trees are painted with red enamel and marked with a 54-3 (Bearing Tree) tag.

Monument Stamped
 T 141 N R 29 W

S 22	S 23
S 27	S 26

 1910

Statement of evidence relative to this corner location is on back of page. 310670

I hereby certify that this document and the data contained herein was prepared by me or under my direct supervision.

David A. Lohr 2/28/89
SIGNATURE DATE

Registration No. 17008
 Land Surveyor, Professional Engineer
 County Surveyor, County Engineer

OFFICE OF THE REGISTER OF DEEDS

County of Cass

I hereby certify that this document was filed in the Reg. of Deeds office at 2:40 P. M. on the 1 day of March, A.D., 1989

Register of Deeds Clairine Kayler
 By ms, Deputy

DOCUMENT NO. 310670

Statement of Evidence:

Northeast Corner Section 27, Township 141
North, Range 29 West, Cass County, Minnesota

R-17 141-29
Bk.4 Pg.38

1873 P. H. Conger, U.S. Deputy Surveyor, originally established this corner position while subdividing Township 141 North, Range 29 West. The notes indicate a wood post was set to mark the corner position and the following witnesses: a 24 inch Norway Pine South 10 degrees West a distance of 154 links; an 8 inch White Pine South 20 degrees East a distance of 210 links; and a 6 inch Tamarack West a distance of 154 links.

1918 U.S. General Land Office dependant resurvey found the corner marked by the remains of wood stake and the Southeast and Southwest bearing trees. A 2 inch by 36 inch iron pipe with a marked brass cap was set to mark the corner. The following bearing trees were marked: a 10 inch Jack Pine North 54 degrees East a distance of 176 links; a 6 inch Jack Pine South 19 degrees 15 minutes East a distance of 117 links; an 8 inch Jack Pine South 22 degrees 30 minutes West a distance of 76 links; and an 8 inch White Oak North 65 degrees 45 minutes West a distance of 133 links.

1964 U.S. Forest Service records show the following: 2 inch monument in good condition; found remains of all four 1918 bearing trees. Set a 6 foot steel sign post North 4.8 feet.

1968 U.S. Forest Service Surveyor Bill Okerman filed corner certificate using 1964 information. Bearing trees noted on corner certificate: a 10 inch Aspen North 50 degrees East a distance of 54.2 feet; an 8 inch Aspen North 39 degrees West a distance of 14.8 feet; a 7 inch Oak South 48 degrees East a distance of 11.8 feet; and a 10 inch Oak South 29 degrees West a distance of 20.5 feet.

1986 U.S. Forest Service crews set an aerial target over this corner position for determination of coordinate values through the use of GPS on the Chippewa South Boundary Project Cadastral Survey U.S. Project Number 53-6392-8-219. This target allowed for the search and location of this corner.

1988 on June 10 a Landecker-Stevenson & Associates crew visited the corner and found the following evidence: a 2 inch brass cap monument up 6 inches in good condition; all 1964 bearing trees are 3 foot stumps; 1918 Southwest bearing trees is a windfall; original Pine stump South 5 degrees West a distance of 101 feet; 1918 Oak now a 20 inch Burr Oak North 65 degrees West a distance of 87.63 feet. New bearing trees were marked and steel sign post set as shown on front of this certificate.