

CERTIFICATE OF LOCATION OF GOVERNMENT CORNER

North Quarter Corner of Section 27, Township 141 N, Range 29 W, 5th P.M.

STATE OF MINNESOTA, County of Cass

At the corner location shown on the sketch: Latitude: 47° 00' 34.024"
 Longitude: 94° 20' 19.341"

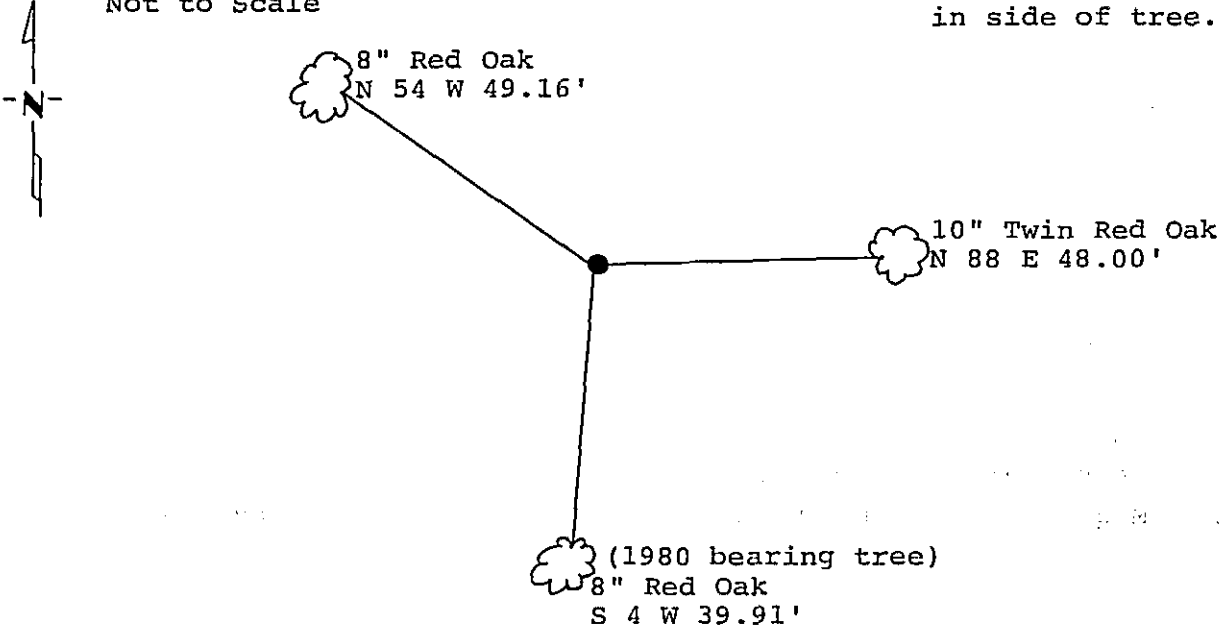
On 6/7/88 found a 1 inch General Land Office Brass Cap Monument.

left monument as found, lowered monument, removed monument (explain)

On _____ placed a _____

Magnetic Decl: 5° East SKETCH OF REFERENCE TIES
 Not to Scale

All distances are horizontal to nail in side of tree.



Monument is located in Hardwoods.
 8' Sign post North 4.0'
 8' Sign post East 4.0'
 6' Sign post East 5.65'

All trees are painted with red enamel and marked with a 54-3 (Bearing Tree) tag.

Monument Stamped
 $\frac{1}{2}$ S22
 $\frac{1}{4}$ S27
 1918

Statement of evidence relative to this corner location is on back of page. 310669

I hereby certify that this survey, plan or report was prepared by me or under my direct supervision and that I am a duly Registered Land Surveyor under the laws of the State of Minnesota.

David S. Landecker
 David S. Landecker
 Date 2/28/89 Registration No. 17008

OFFICE OF THE COUNTY RECORDER
 County of Cass

I hereby certify that this document was filed in the Co. Recorders office at 2:35 P. M. on the 1 day of March A.D., 1989
 County Recorder Clondine Kayler
 By MJ, Deputy
 DOCUMENT NO. 310669

Statement of Evidence:

North Quarter Corner Section 27, Township 141
North, Range 29 West, Cass County, Minnesota

R-15 141-29
Bk. 4 Pg. 37

1873 P. H. Conger, U.S. Deputy Surveyor, originally established this corner position while subdividing Township 141 North, Range 29 West. The notes indicate a wood post was set to mark the corner position and the following witnesses: an 8 inch Birch North 20 degrees West a distance of 16 links; and a 6 inch Maple South 31 degrees East a distance of 19 links.

1918 U.S. General Land Office dependant resurvey reestablished this corner at the proportional position between the Northwest and the Northeast corners of said Section 27. A 1 inch by 3/8 inch iron pipe with a marked brass cap was set to mark the corner. The following bearing trees were marked: an 8 inch Black Oak South 32 degrees 45 minutes East a distance of 175 links; and a 14 inch Black Oak North 63 degrees 15 seconds West a distance of 63 links.

1965 U.S. Forest Service records show the following: USFS personnel found the brass cap monument and stump hole of 1918 Northwest bearing tree. Set 6 foot sign post East 5.5 feet. New bearing trees were marked: a 5 inch Maple North 48 degrees East a distance of 17.5 feet; a 9 inch Oak South 86 degrees East a distance of 12.9 feet.

1968 U.S. Forest Service Surveyor Bill Okerman filed corner certificate using 1965 information.

1980 U.S. Forest Service technician W. Olson found the corner monumented with a brass cap monument. The following bearing trees were found: a 1965 Oak bearing tree with scar grown over; 1965 Maple bearing tree stump found with scribing. Two new bearing trees were marked: an 11 inch Birch North 69 degrees West a distance of 13.41 feet; and a 7 inch Red Oak South 4 degrees West a distance of 40.1 feet.

1982 Gary Stevenson, Registered Land Surveyor Number 12684, found items as per 1980 report. He filed Corner Certificate to update 1965 certificate.

1986 U.S. Forest Service crews set an aerial target over this corner position for determination of coordinate values through the use of GPS on the Chippewa South Boundary Project Cadastral Survey U.S. Project Number 53-6392-8-219. This target allowed for the search and location of this corner.

CERTIFICATE OF LOCATION OF GOVERNMENT CORNER

North Quarter Corner Section 27, Township 141
North, Range 29 West, Cass County, Minnesota

R-15 141-29
Bk.4 Pg.37

1988 on June 7 a Landecker-Stevenson & Associates crew visited the corner and found the following evidence: a 1 inch brass cap monument in good condition; a 4 foot stub of 1980 Birch bearing tree; stumps of both 1965 bearing trees; 1980 bearing tree now an 8 foot Red Oak South 4 degrees West a distance of 39.91 feet (scribe showing). New bearing trees were marked and steel sign posts set as shown on front of this certificate.