

# CERTIFICATE OF LOCATION OF GOVERNMENT CORNER

East Quarter \_\_\_\_\_ Corner of Section 11, Township 134 N., Range 31 W., 5th P.M.

STATE OF MINNESOTA, County of CASS

At the corner location shown on the sketch:

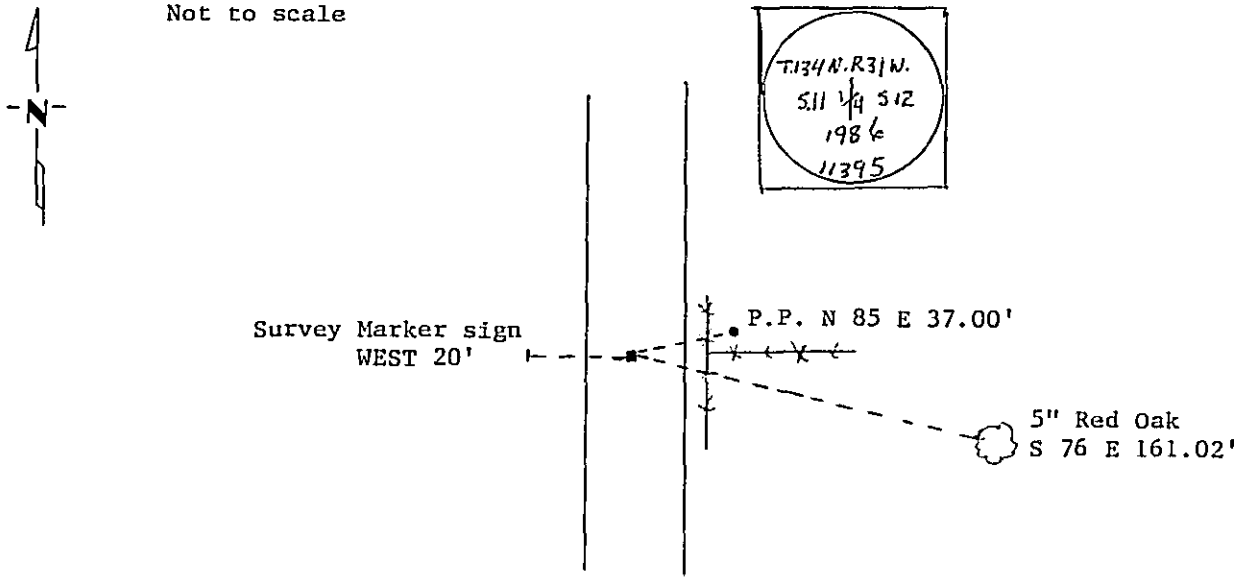
On \_\_\_\_\_ found a \_\_\_\_\_  
DATE

left monument as found,  lowered monument,  removed monument (explain)

On 10/7/86 placed a 2"x18" telespar monument with stamped aluminum cap  
DATE  
down 1'

### SKETCH OF REFERENCE TIES

Not to scale



Statement of evidence relative to this corner location is on back of page. 309794

I hereby certify that this document and the data contained herein was prepared by me or under my direct supervision.

Walter E. Lemo 1-9-89  
SIGNATURE DATE

Registration No. 11395

Land Surveyor,  Professional Engineer

County Surveyor,  County Engineer

### OFFICE OF THE COUNTY RECORDER

County of Cass

I hereby certify that this document was filed in the Co. Recorders office at 4:05 P.M. on the 9 day of January A.D., 1989

County Recorder Placidine Kaylor  
By ms, Deputy

DOCUMENT NO. 309794

Statement of Evidence: East Quarter Corner Section 11, T. 134 N., R. 31 W., 5th P.M.

- 1869 US General Land Office survey set a wood post for this corner and marked the following bearing trees: 4" Aspen N 88 E 24 lks., 3" Aspen S 62 W 5 lks.
- 1986 On July 2, Terry Freeman, Cass County Survey Technician and Glen Williams, backhoe operator, dug in area of fence East. Dug 14' N-S x 9' E-W x 1.5' deep. 0.5' top & fill, dug 1' into natural sandy loam. Found nothing.