

CERTIFICATE OF LOCATION OF GOVERNMENT CORNER

Northeast Corner of Section 11, Township 134 N., Range 31 W., 5th P.M.

STATE OF MINNESOTA, County of CASS

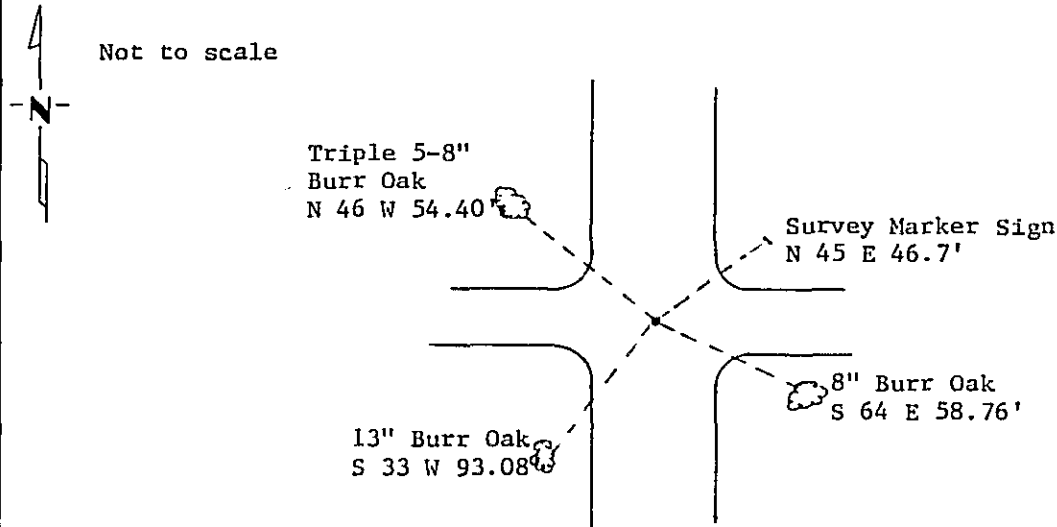
At the corner location shown on the sketch:

On 11/1/85 found a 2" I.P. down 0.1'
DATE

left monument as found, lowered monument, removed monument (explain)

On 8/5/87 ~~placed~~ lowered monument 10"
DATE

SKETCH OF REFERENCE TIES



Statement of evidence relative to this corner location is on back of page. 309792

I hereby certify that this document and the data contained herein was prepared by me or under my direct supervision.

Walter E. Am 1-9-89
SIGNATURE DATE

Registration No. 11395

- Land Surveyor, Professional Engineer
 County Surveyor, County Engineer

OFFICE OF THE COUNTY RECORDER

County of Cass

I hereby certify that this document was filed in the Co. Recorders office at 3:55 P.M. on the 9 day of January A.D., 19 89

County Recorder Cloudline Keyler
 By ms, Deputy

DOCUMENT NO. 309792

Statement of Evidence: Northeast Corner Section 11, T. 134 N., R. 31 W. 5th P.M.

- 1869 US General Land Office survey set a wood post for this corner and marked the following bearing trees: 4" Aspen S 34 W 5 lks., 5" Aspen N 65 W 6 lks., 5" Aspen N 35 E 12 lks., 4" Aspen S 25 E 10 lks.
- 1915 County Survey Record Book "B", pages 484-495, show a survey by N.D. Gorman. He started from corner and ran north.
- 1915 County Survey Record Book "C", page 88, shows a survey by E.B. Horst. He found an iron monument and ran east.
- 1985 On Nov. 1, Terry Freeman, Cass County Survey Technician, found a 2" I.P. down 0.1'
- 1987 On Aug. 5, lowered the monument 10" and marked BT's as shown on front of this certificate.