

CERTIFICATE OF LOCATION OF GOVERNMENT CORNER

Northeast _____ Corner of Section 7, Township 134 N., Range 31 W., 5th P.M.

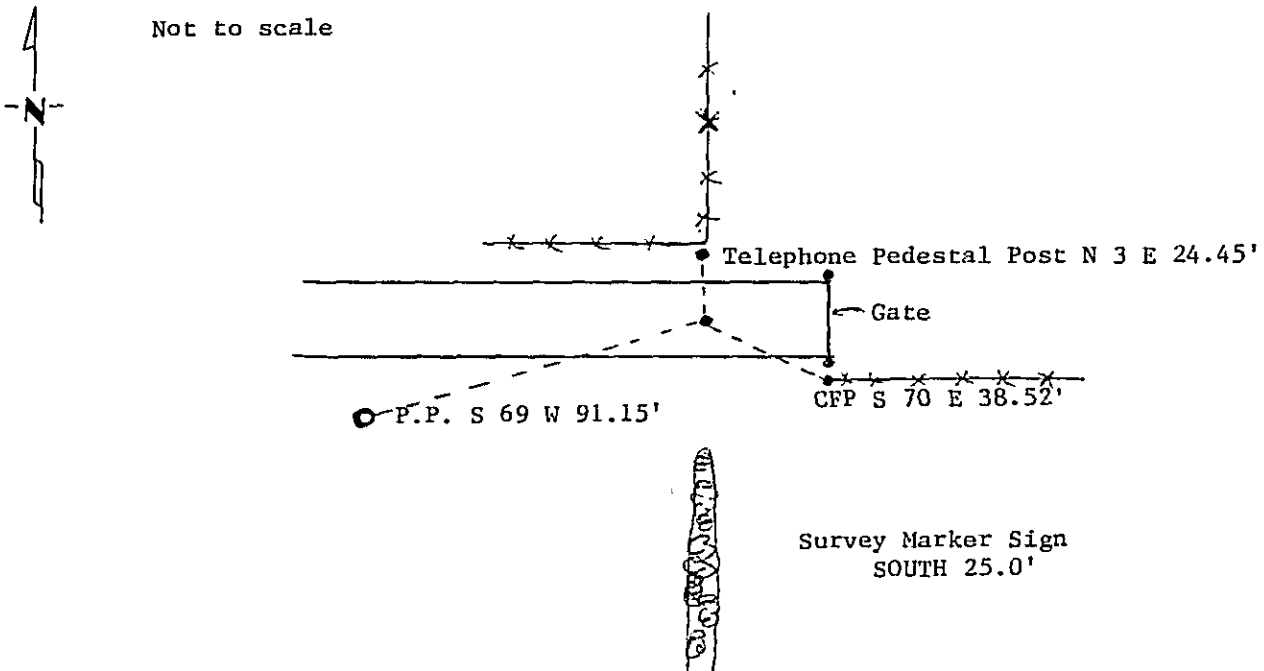
STATE OF MINNESOTA, County of CASS

At the corner location shown on the sketch:

- On _____ found a _____
DATE
- left monument as found, lowered monument, removed monument (explain)
- On 10/16/86 placed a County cast iron monument down .6" in road
DATE
in line w/fence N., in line w/field line S. and in centerline road.

SKETCH OF REFERENCE TIES

Not to scale



Statement of evidence relative to this corner location is on back of page. 309791

I hereby certify that this document and the data contained herein was prepared by me or under my direct supervision.

Walter E. Olson 1-9-89
SIGNATURE DATE

Registration No. 11395

Land Surveyor

County Surveyor

OFFICE OF THE COUNTY RECORDER

County of Cass

I hereby certify that this document was filed in the Co. Recorders office at 3:50 P .M. on the 9 day of January A.D., 1989

County Recorder Claudine Kaye

By MS, Deputy

DOCUMENT NO. 309791

Statement of Evidence: Northeast Corner Section 7, T.134 N., R.31 W., 5th P.M.

- 1869 US General Land Office survey set a wood post for this corner and marked the following bearing trees: 13" Aspen N 68 E 18 lks., 8" Aspen N 44 W 24 lks., 4" Oak S 50 E 31 lks., 13" Oak S 13½ W 29 lks.
- 1986 On Oct. 2, Terry Freeman, Cass County Survey Technician and Glen Williams, backhoe operator, dug for corner. Dug 8' N-S x 12' E-W x 2' deep. .75' top & fill and dug 1.25' into natural sandy-gravel. Found dump near E. edge of hole.
- On Oct. 16, Terry Freeman, and Jim Cripps and Norman Maunt, set cast iron monument down 6" in centerline E-W road, in line with fence north and field line south.