

CERTIFICATE OF LOCATION OF GOVERNMENT CORNER

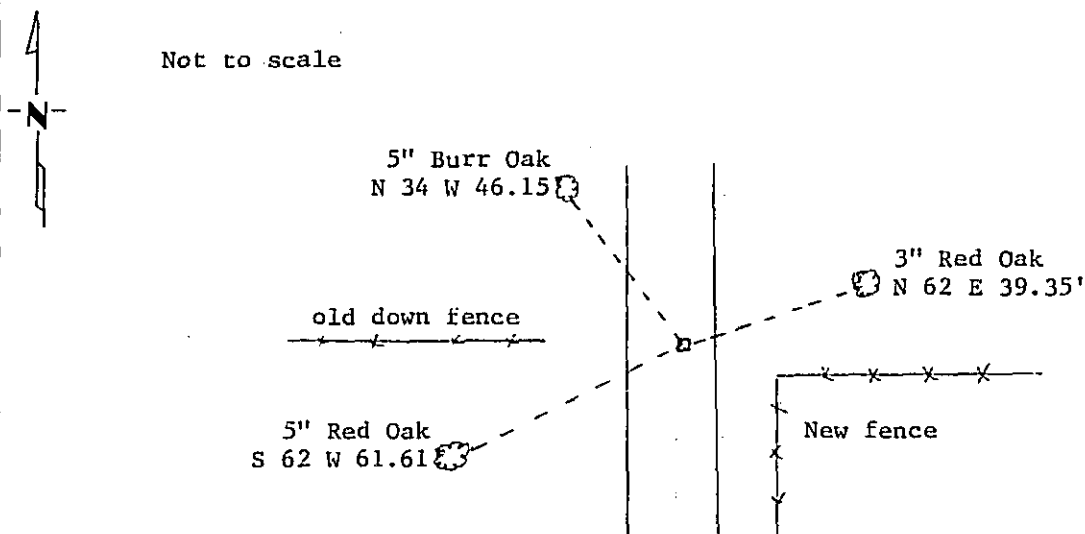
East Quarter _____ Corner of Section 2, Township 134 N., Range 31 W., 5th P.M.

STATE OF MINNESOTA, County of CASS

At the corner location shown on the sketch:

- On _____ found a _____
DATE
- left monument as found, lowered monument, removed monument (explain)
- On 10/22/86 placed a 2"x18" telespar monument with stamped aluminum cap
DATE
in line w/old fence W., 6.5' N. of fence E., 33' E. of old CFP W., 1.5' E. of G.

SKETCH OF REFERENCE TIES



Statement of evidence relative to this corner location is on back of page. 309789

I hereby certify that this document and the data contained herein was prepared by me or under my direct supervision.

Walter E. Carr 1-9-89
SIGNATURE DATE

Registration No. 11395

- Land Surveyor
- County Surveyor

OFFICE OF THE COUNTY RECORDER

County of Cass

I hereby certify that this document was filed in the Co. Recorders office at 3:40 P.M. on the 9 day of January A.D., 19 89

County Recorder Clontine Keyler
By ms, Deputy

DOCUMENT NO. 309789

Statement of Evidence: East Quarter Corner Section 2, T.134 N., R.31 W., 5th P.M.

- 1869 US General Land Office survey set a wood post for this corner and marked the following bearing trees: 4" Aspen N 85 W 16 lks., 16" Aspen S 88 E 14lks.
- 1915 County Resurvey Record Book "B", pages 484-495, show a survey by N.D.Gorman. He set an iron monument proportionally.
- 1986 On May 14, Terry Freeman, Cass County Survey Technician, searched for corner with metal locator-found nothing. Glens Willaims, backhoe operator, dug for corner-dug 6'E-Wx 12'N-Sx3'deep. 6"top, 2'fill with layer of big rocks & dug 6" into natural black dirt. Found nothing
- 1986 On Oct. 22, Terry Freeman and Walt Curo, Cass County Surveyor, set 2"x18"telespar monument with stamped aluminum cap in line with old down fence W., 33'E. of old CFP, 1.5'E. of N-S centerline and 6.5'N. of new fence E.