

CERTIFICATE OF LOCATION OF GOVERNMENT CORNER

NORTH 1/16TH LINE

SPECIAL MEANDER Corner of Section 30, Township 142, Range 28, 5th P.M.

STATE OF MINNESOTA, County of CASS

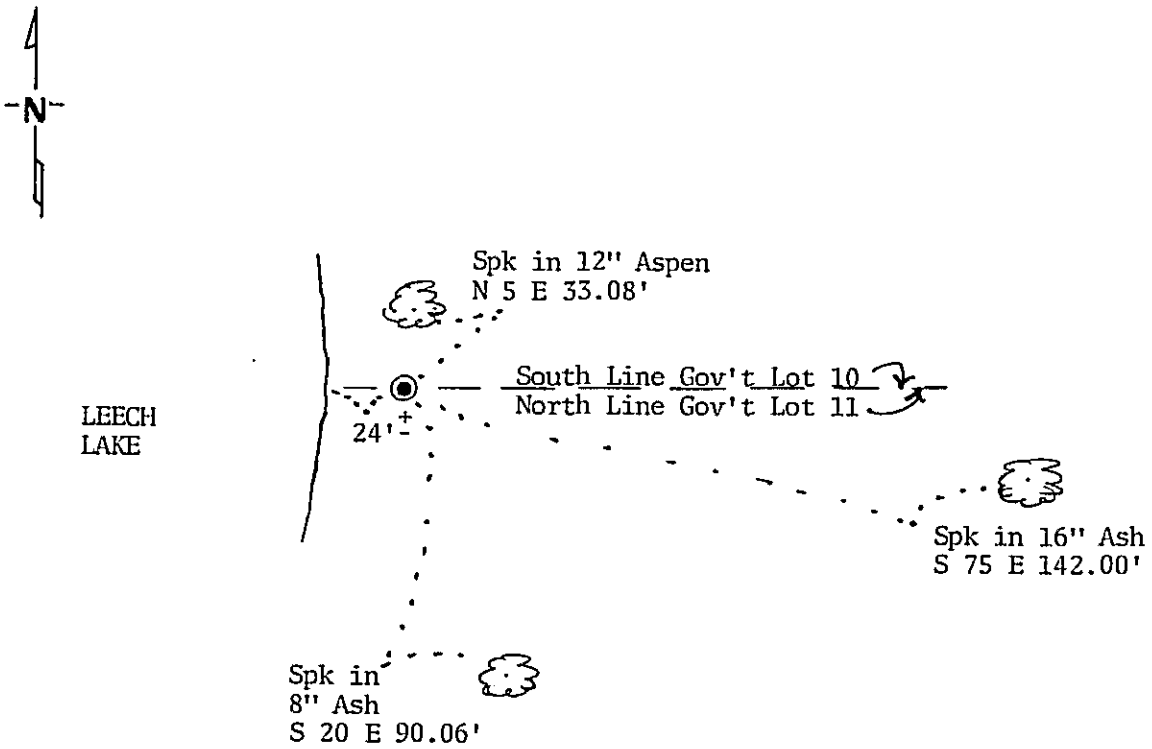
At the corner location shown on the sketch:

On 10/21/87 found a USGLO brass cap monument
DATE

left monument as found, lowered monument, removed monument (explain)

On _____ placed a _____
DATE

SKETCH OF REFERENCE TIES



BEARINGS ARE APPROXIMATE

Statement of evidence relative to this corner location is on back of page. 304196

I hereby certify that this document and the data contained herein was prepared by me or under my direct supervision.

Sam H. Alawen 4/16/88
SIGNATURE DATE

Registration No. 12684

- Land Surveyor, Professional Engineer
- County Surveyor, County Engineer

OFFICE OF THE REGISTER OF DEEDS

County of Cass

I hereby certify that this document was filed in the Reg. of Deeds office at 11:20 A.M. on the 6 day of May A.D., 1988

Register of Deeds Clarence Kayler

By ms Deputy

DOCUMENT NO. 304196

Statement of Evidence:

- 1928 U.S. General Land Office dependent resurvey established this corner and an iron pipe with a marked brass cap was set to mark the corner. The following bearing trees were marked: 12" Elm N 50° 15' E 168 links and 16" Elm S 64° 45' E 221 links.
- 1949 AUDITORS PLAT NO. 10 surveyed by Harold Curo, RLS No. 3417. Survey plat shows U.S. iron monument in place.
- 1965 Survey notes of Robert F. Schneider, RLS No. 5740, shows GLO monument found in place.
- 1987 Found GLO brass cap monument in good condition. Measured east to center north sixteenth corner which checked very well with 1928 resurvey bearing and distance. Found remains of one 1928 BT, an Elm stump S 65 E 145 feet to center. Accepted monument as found and took new ties as shown on this certificate.