

CERTIFICATE OF LOCATION OF GOVERNMENT CORNER

East Quarter _____ Corner of Section 9, Township 141, Range 27, 5th P.M.

STATE OF MINNESOTA, County of Cass

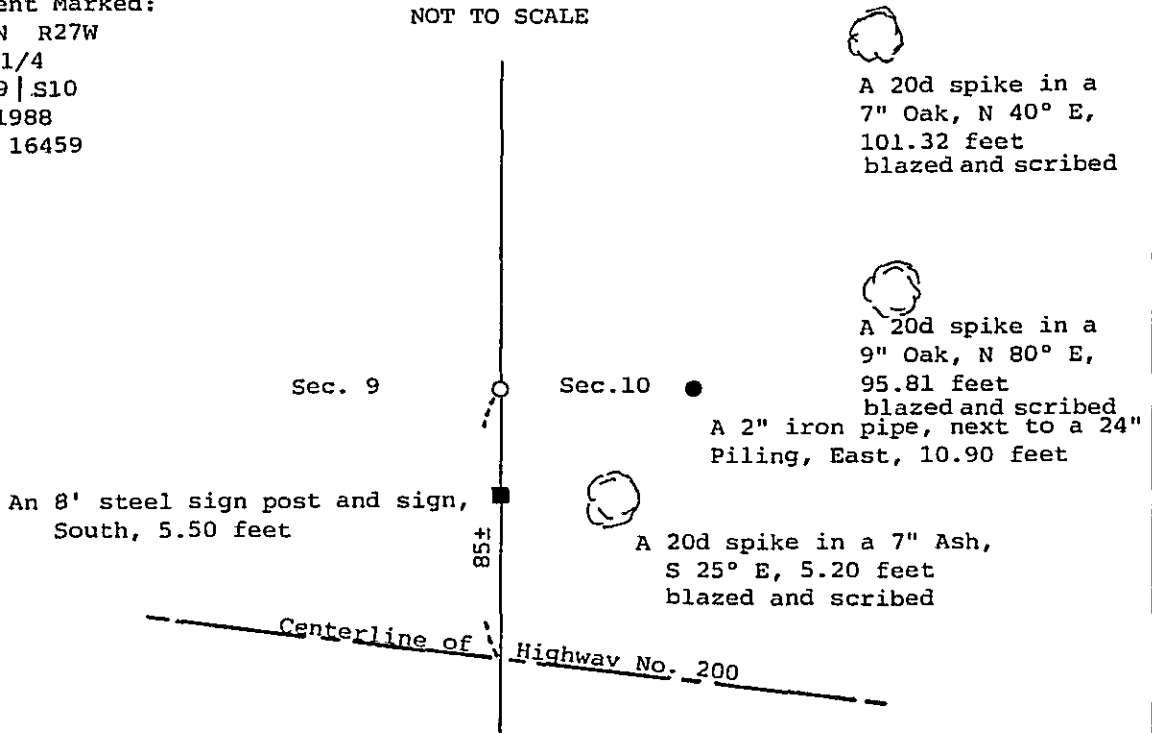
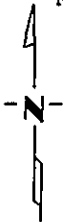
At the corner location shown on the sketch:

- On _____ found a _____
DATE
- left monument as found, lowered monument, removed monument (explain)
- On 1-18-1988 placed a 2" x 48" brass capped iron pipe
DATE

SKETCH OF REFERENCE TIES

NOT TO SCALE

Monument Marked:
 T141N R27W
 1/4
 S9 | S10
 1988
 RLS 16459



Bearings: Magnetic

All trees tagged with a USFS 54-3 tag.

Statement of evidence relative to this corner location is on back of page. 302627

I hereby certify that this survey, plan or report was prepared by me or under my direct supervision and that I am a duly Registered Land Surveyor under the laws of the State of Minnesota.

Robert L. Connor

Date 2-2-88 Registration No. 16459

OFFICE OF THE COUNTY RECORDER

County of Cass

I hereby certify that this document was filed in the Co. Recorders office at 4:07 P.-M. on the 5 day of February A.D., 19 88

County Recorder Cherline Kayser

By m s, Deputy

DOCUMENT NO. 302627

Statement of Evidence:

East Quarter corner of Section 9

1-10-1874 P.H. Conger, Deputy Surveyor set a Poplar post for corner and witnessed as follows:

Poplar 6" South 17 degrees East 23 links (15.18 feet)

Poplar 4" North 31 degrees West 29 links (19.14 feet)

Said records are filed with the Secretary of State, St. Paul, MN.

1919 Donald Clement, U.S. Surveyor, in a GLO resurvey found no evidence of original post or bearing trees. His records do not indicate that this corner was reestablished. Said records are filed with the Secretary of State, St. Paul, MN.

1931 State Highway Department Land tie notes indicate an iron pipe in place 88.3 feet North of proposed centerline of Highway Number 34 at Sta. 749+81.0. Said records are on file with MN/DOT, District 3A Office, Brainerd, MN. Cass County Land Corner records indicate this date as 1927.

6-15-1936 A. Jager, compassman, USFS, found iron pipe in good condition 30" above ground and set a FSLP on a post South 87 degrees East 0.16 chains (10.56 feet). Said records are on file with the USFS in Cass Lake, MN.

6-20-1968 L. Elliot, USFS, found iron pipe in good condition 100', more or less, North of Highway Number 34, also found post with FSLP. Said records are on file with the USFS in Cass Lake, MN.

10-8-1975 C. Krause, USFS, found 2" x 40" iron pipe, also large piling with old and new (1973) FSLP. Said records are on file with the USFS in Cass Lake, MN.

10-21-1987 Personnel of Kovanen Surveying found a 2" iron pipe beside a large piling with old and new FS tags. Found monument is approximately 11 feet East of 1931 position by Highway 200 Stationing. No evidence of the 1936 Jager post was found.

1-18-1988 Personnel of Kovanen Surveying established position as lost, midway and on line between adjacent section corners and monument as shown on the drawing

This position is not a perpetuation of the original GLO corner.