

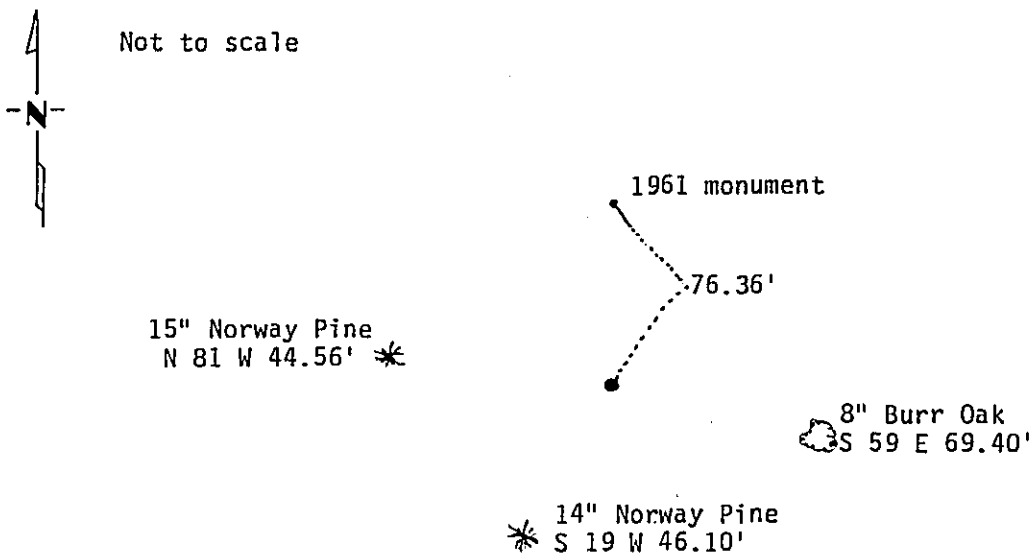
CERTIFICATE OF LOCATION OF GOVERNMENT CORNER

East Quarter Corner of Section 28, Township 141 N., Range 31 W., 5th P.M.
 STATE OF MINNESOTA, County of CASS

At the corner location shown on the sketch:

- On 10/20/87 found a 2" capped I.P. (as set in 1961)
DATE
- left monument as found, lowered monument, removed monument (explain)
- On 1/15/88 placed a 2"x5' I.P. with stamped brass cap 76.36' south
DATE of found I.P. (set at proportional position)

SKETCH OF REFERENCE TIES



Trees blazed, scribed, painted red and 54-3 Bearing Tree tag attached.
 Measurement taken to nail in side of tree.

Statement of evidence relative to this corner location is on back of page. 302619

I hereby certify that this document and the data contained herein was prepared by me or under my direct supervision.

Walter E. Rose 2-4-88
SIGNATURE DATE

Registration No. 11395

- Land Surveyor
- County Surveyor

OFFICE OF THE COUNTY RECORDER
 County of Cass

I hereby certify that this document was filed in the Co. Recorders office at 3:30 P.M. on the 5 day of February A.D., 1988

County Recorder Claudia Kayler
 By MS, Deputy

DOCUMENT NO. 302619

Statement of Evidence: East Quarter Corner Section 28,T.141 N.,R.31 W.,5th P.M.

- 1873 US General Land Office survey set a wood post for this corner and marked the following bearing trees: 6" W.Pine N 6 W 7 lks., 6" Birch S 70 E 12 lks.
- 1961 Pete Meyer, RLS #3628, filed AFFIDAVIT AS TO LOCATION OF GOVERNMENT CORNER, which states that the corner was set by single proportionate measurement between the NE & SE corners of Section 28. The $\frac{1}{4}$ corner location was determined by transit survey methods, with the field notes on file in the Supervisor's Office of the US Forest Service in Cass Lake in "Boundary Surveys-field Book No. 2". A 2"x5' I.P. with stamped brass cap was set and BT's marked: 18" N.Pine S 44 W 69.9', 6" Oak N 60 W 6.1' and 9" Oak S 75 E 45.8', all marked " $\frac{1}{4}$ (Sec.#)" and "BT"
- 1980 US Forest Service technicians Schoonover & Brama, found the monument in good condition, the N.Pine is a dead snag, NW Oak now 7", and the SE Oak now 11". Steel sign posts set S. 6.13' and N. 2.85'. New BT marked: 12" Red Pine S 87 W 82.15', scribed " $\frac{1}{4}$ S 28 BT" and FSLP put on 18" Poplar S 17 W 3.0'
- 1987 In October, Walt Curo, under Forest Service contract surveying in Section 27, finds the 1961 monument. The monument was set at the proportional position between the NW & SW corners of Section 27. However, there is original evidence at the meander corner on the north side of Bass Lake, which is the nearest original corner to the north. Therefore, I determine that the $\frac{1}{4}$ corner should be set proportionally between SW corner and Meander Corner # 32 (North side of lake). This moves the position for the corner South 76.36'. I set a 2"x5' I.P. with marked brass cap and mark new BT's as shown on front of this certificate, on January 15, 1988.