

# CERTIFICATE OF LOCATION OF GOVERNMENT CORNER

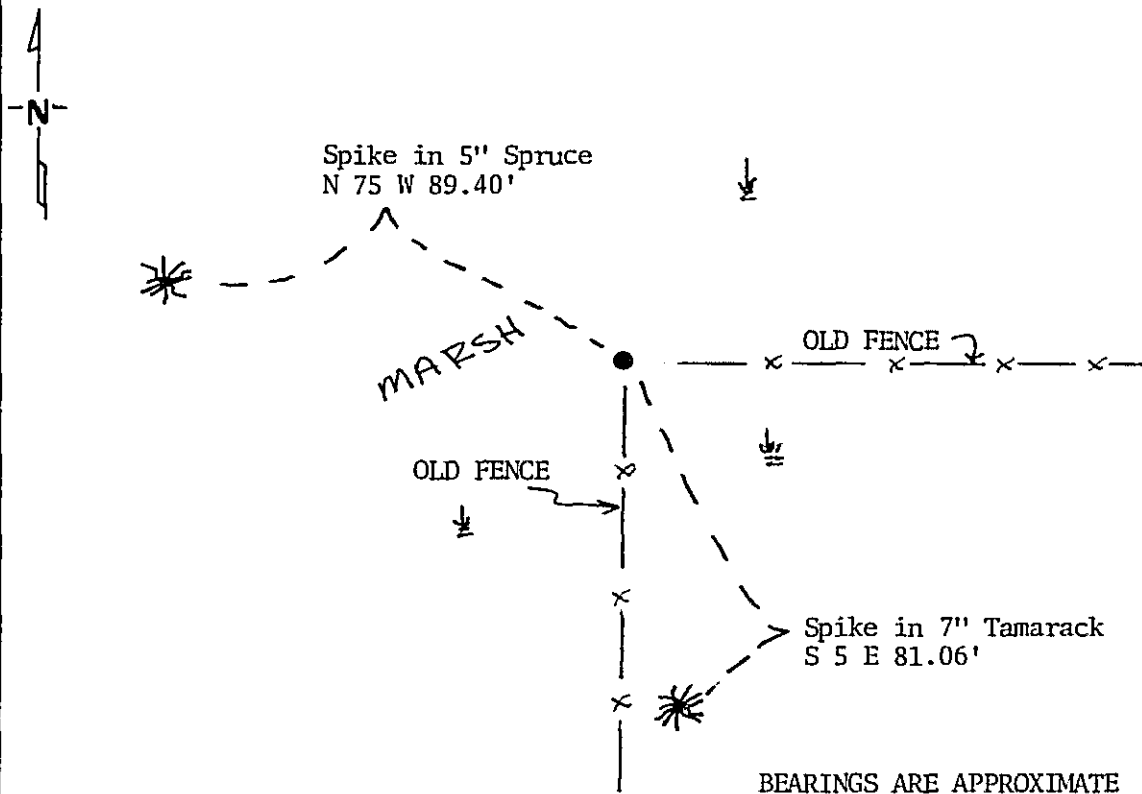
SOUTHWEST 1/16th Corner of Section 30, Township 142, Range 28, 5th P.M.

STATE OF MINNESOTA, County of CASS

At the corner location shown on the sketch:

- On 12-15-87 found a USGLO brass cap monument  
DATE
- left monument as found,  lowered monument,  removed monument (explain)
- On \_\_\_\_\_ placed a \_\_\_\_\_  
DATE

## SKETCH OF REFERENCE TIES



Statement of evidence relative to this corner location is on back of page. 302552

I hereby certify that this document and the data contained herein was prepared by me or under my direct supervision.

Maury A. Stevenson 1/18/88  
SIGNATURE DATE

Registration No. 12684

- Land Surveyor,  Professional Engineer
- County Surveyor,  County Engineer

## OFFICE OF THE REGISTER OF DEEDS

County of Cass

I hereby certify that this document was filed in the Reg. of Deeds office at 9:50 A.M. on the 3 day of February A.D., 19 88

Register of Deeds Claudine Kuyler

By M.S., Deputy

DOCUMENT NO. 302552

## Statement of Evidence:

- 1928 U.S. General Land Office dependent resurvey established this corner and an iron pipe with a marked brass cap was set to mark the corner. The following bearing trees were marked: 10" Poplar N  $76^{\circ}40'$  E 373 links and 18" W. Oak S  $73^{\circ}55'$  E 357 links.
- 1987 County Surveyor's Records in the Recorder's Office were checked and no resurvey information was found on this corner.
- 1987 U.S. Forest Service office in Cass Lake was contacted for information and no resurvey information was found on this corner.
- 1987 Found GLO brass cap monument in bog as described in 1928 notes. No evidence was found of the bearing trees. Monument was in good shape, but twisted slightly to the northeast. Monument was at corner of old fence lines running east and south. Monument checked good with bearings and distances given to other corners in Sec. 30 set in the 1928 survey. Accepted monument position and took new ties as shown on this certificate.