

CERTIFICATE OF LOCATION OF GOVERNMENT CORNER

NORTH QUARTER Corner of Section 16, Township 140 N, Range 29 W, 5th P.M.

STATE OF MINNESOTA, County of CASS

At the corner location shown on the sketch:

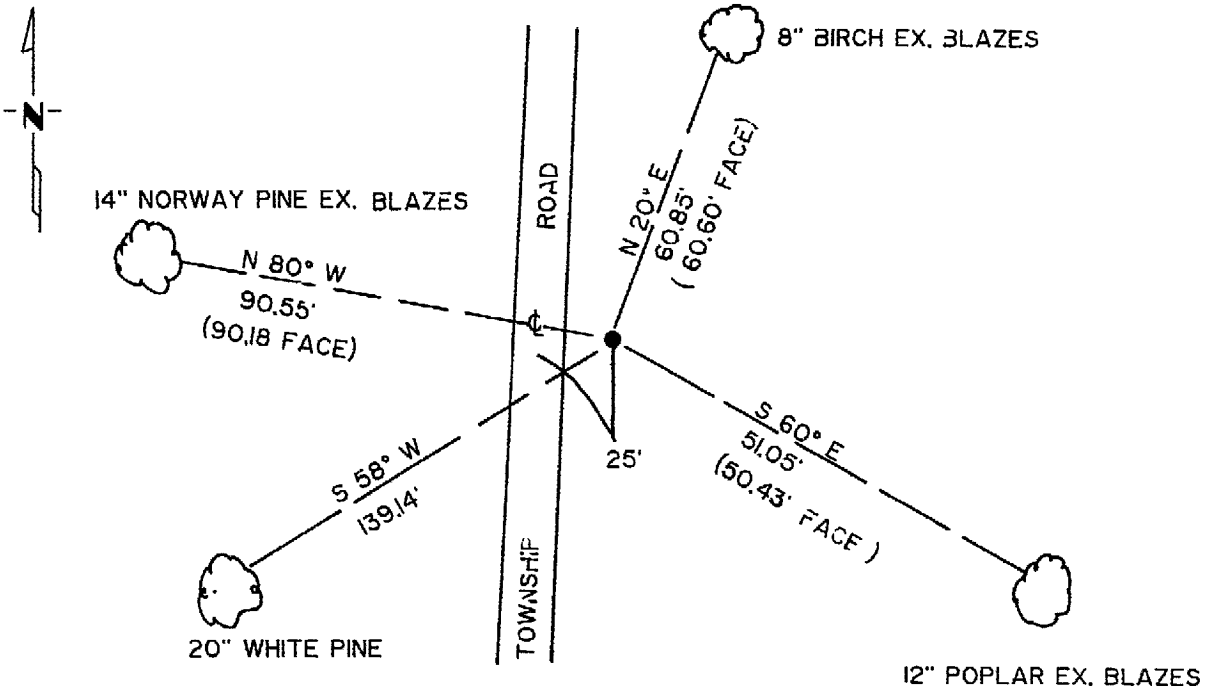
On OCT. 20, 1987 found a 2" IRON WITH 3" CAP, 24" BELOW GROUND.
DATE

left monument as found, lowered monument, removed monument (explain)

On _____ placed a _____
DATE

NO SCALE

SKETCH OF REFERENCE TIES



NOTE: BEARINGS TO TREES ARE MAGNETIC.
DISTANCES ARE TO DISC IN SIDE OF TRFES.
ALL TREES ARE MARKED WITH DOUBLE BLAZES.

Statement of evidence relative to this corner location is on back of page. 302270

I hereby certify that this document and the data contained herein was prepared by me or under my direct supervision.

David A. Lindholm 12/31/87
SIGNATURE DATE

Registration No. 17008

- Land Surveyor
- County Surveyor

OFFICE OF THE COUNTY RECORDER

County of Cass

I hereby certify that this document was filed in the Co. Recorders office at 3:46 P. M. on the 13 day of January A.D., 19 88

County Recorder Claudia Kayler
By ms, Deputy

DOCUMENT NO. 302270

Statement of Evidence:

J-11

North Quarter Corner Section 16, Township 140 North, Range 29 West, Cass County, Minnesota.

In 1870 the original government survey was done by Orville Smith. A wood post was set to make the corner.

Two bearing trees witnessing said corners were marked, noted as follows:

16" yellow pine North 49 degrees East, 75 links

6" red maple South 81 degrees West, 35 links

In 1911 Harry S. Todd found stake set by Curo from original government BT's and set in its place a 2" x 48" capped galvanized iron pipe. County survey record Book 'A', Page 484 - 487.

In 1950 Harold Curo finds iron monument as noted in County Book 'D', Page 356.

In 1965 and in 1975 R. F. Schneider, RLS #5740 finds capped iron pipe monument and makes new ties.

In 1978 Roger Mustonen, RLS #11946, while employed by W. J. Spain, Jr. RLS #2003, finds capped iron pipe monument and uses in plat of SUNRISE TRAIL of record.

In 1983 County Survey Technician, Terry Freeman finds capped iron pipe and 1975 Schneider ties.

In 1987 David Landecker, RLS #17008, surveyor with the firm Landecker & Associates, Inc. finds and accepts monument established and used by previous surveyors noted above.

Landecker File #8778