

CERTIFICATE OF LOCATION OF GOVERNMENT CORNER

NORTHEAST Corner of Section 32, Township 134 N, Range 30 W, 5th P.M.

STATE OF MINNESOTA, County of CASS

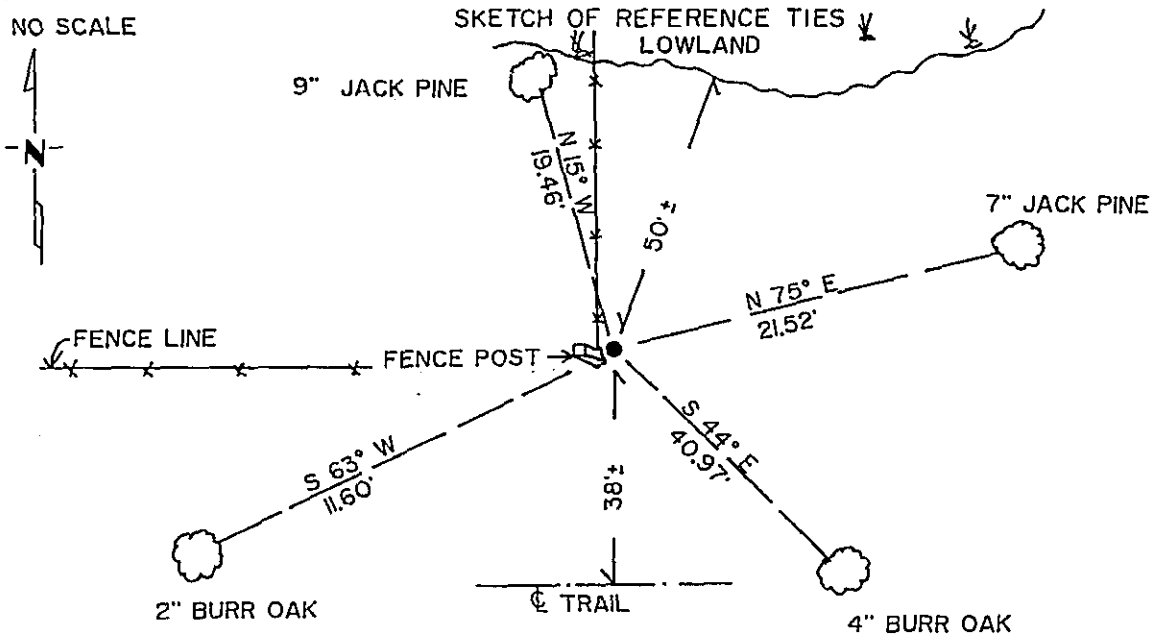
At the corner location shown on the sketch:

On NOV. 24, 1987 found a RAIL ROAD TIE USED AS FENCE POST CORNER
DATE

left monument as found, lowered monument, removed monument (explain)

On DEC. 21, 1987 placed a 4" CAST IRON COUNTY MONUMENT, 1" ABOVE GROUND AT
DATE
BASE OF FENCE POST SURVEY MARKER SIGN AFFIXED TO FENCE POST

NO SCALE



NOTE: ALL BEARINGS ARE MAGNETIC.
 DISTANCES ARE TO DUPLEX NAILS IN SIDE OF TREES.
 ALL TREES ARE MARKED WITH DOUBLE BLAZES.

Statement of evidence relative to this corner location is on back of page.

302269

I hereby certify that this document and the data contained herein was prepared by me or under my direct supervision.

David J. LaLonde 12/31/87
SIGNATURE DATE

Registration No. 17008

Land Surveyor, Professional Engineer

County Surveyor, County Engineer

OFFICE OF THE COUNTY RECORDER

County of Cass

I hereby certify that this document was filed in the Co. Recorders office at 3:45 P. M. on the 13 day of January A.D., 19 88

County Recorder Clondine Kaylor

By ms, Deputy

DOCUMENT NO. 302269

Statement of Evidence:

V-9

Northeast corner, Section 32, Township 134 North, Range 30 West, Cass County, Minnesota.

In 1868 the original government survey was done by N. Butler a wood post was set to mark the corner. Three bearing trees witnessing said corner were marked, noted as follows:

- 6" Norway Pine South 46 degrees East, 40 links
- 14" Norway Pine South 78 degrees West, 83 links
- 13" Poplar North 21 degrees West, 52 links

In 1921 John M. Greene sets oak post from burnt original B.T. stump and then runs West 2 miles to town line, notes in Curo records Book 173 pages 13 through 27.

In 1987 State of Minnesota DNR survey crews under the supervision of surveyor Bert R. Eveland, RLS #10516 are shown fence corner (fence runs West and North) by local resident John Zorichak. His testimony reports fence corner post being set by deceased long time resident Charlie Yezek by iron pipe at corner location.

Following in 1987 while contracted with the State for land surveying, David Landecker, RLS #17008 surveyor with Landecker & Associates, Inc. found corner post found by State survey crews, and further received testimony from life time resident Harlan LaPorte that fence running East and West was on Section line, the corner monument located one half-mile South checked for distance. The corner monument located 2 miles West as used and measured by Greene in 1921 was off for distance in his notes by 120 feet, however Greene further calculations showing proportionate distance to the Southwest corner of Section 29 check close to measurements obtained during process of this survey. It is Landecker's opinion that Greene either had a 100 foot bust in chaining the 2 mile stretch or transposed the numbers in his overall distance measured.

Landecker & Associates, Inc. accepts the fence corner as being the perpetuation of the corner location.

Landecker File #87109