

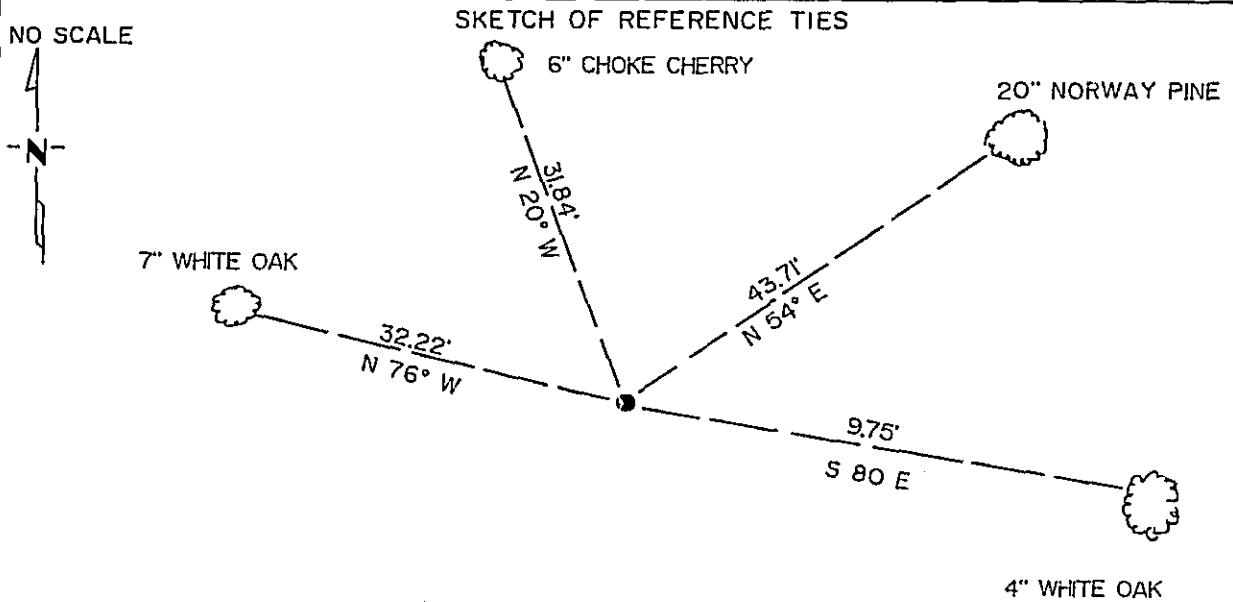
CERTIFICATE OF LOCATION OF GOVERNMENT CORNER

NORTHEAST Corner of Section 28, Township 134 N., Range 30 W., 5th P.M.

STATE OF MINNESOTA, County of CASS

At the corner location shown on the sketch:

- On DEC. 12, 1987 found a 1-1/2" IRON PIPE, 12" ABOVE GROUND WITH SMALL PILE OF STONES AROUND IRON
DATE
- left monument as found, lowered monument, removed monument (explain)
- On _____ placed a _____
DATE



NOTE: ALL BEARINGS ARE MAGNETIC.
 DISTANCES ARE TO DUPLEX NAILS IN SIDE OF TREES.
 ALL TREES ARE MARKED WITH DOUBLE BLAZES.

Statement of evidence relative to this corner location is on back of page. 302267

I hereby certify that this document and the data contained herein was prepared by me or under my direct supervision.

Alvin A. Lindholm 12/31/87
SIGNATURE DATE

Registration No. 17008
 Land Surveyor, Professional Engineer
 County Surveyor, County Engineer

OFFICE OF THE COUNTY RECORDER
 County of Cass

I hereby certify that this document was filed in the Co. Recorders office at 3:43 P.M. on the 13 day of January A.D., 19 88

County Recorder Claudia Kayla
 By MS, Deputy

DOCUMENT NO. 302267

Statement of Evidence:

R-13

Northeast Corner, Section 28, Township 134 North, Range 30 West, Cass County, Minnesota.

In 1868 the original government survey was done by N. Butler. A wood post was set to mark the corner. Four bearing trees witnessing said corner was marked, noted as follows:

18" poplar South 85 degrees East, 28 links
10" birch South 63 degrees West, 33 links
10" red oak South 18 degrees East, 70 links
5" pine North 60 degrees West, 43 links.

Retired State of Minnesota area forester Mr. Al Stark reported location of monument from his records and use. He believed corner was monumented by CCC's in or around 1937, however location of their notes is unknown for verification.

In 1987 State of Minnesota DNR survey crews under the supervision of surveyor Bert R. Eveland, RLS #10516 found above referenced monument and made witness ties as shown on the face of this Certificate. Following in 1987 while contracted with the State for land surveying, David Landecker, RLS #17008, surveyor with the firm Landecker & Associates, Inc. found monument tied out by State survey crews and verified its location and witness ties, and further accepts this monument as the perpetuation of the corner location.

Landecker File #87109