

# CERTIFICATE OF LOCATION OF GOVERNMENT CORNER

NORTH QUARTER Corner of Section 28, Township 134 N, Range 30 W, 5th P.M.

STATE OF MINNESOTA, County of CASS

At the corner location shown on the sketch:

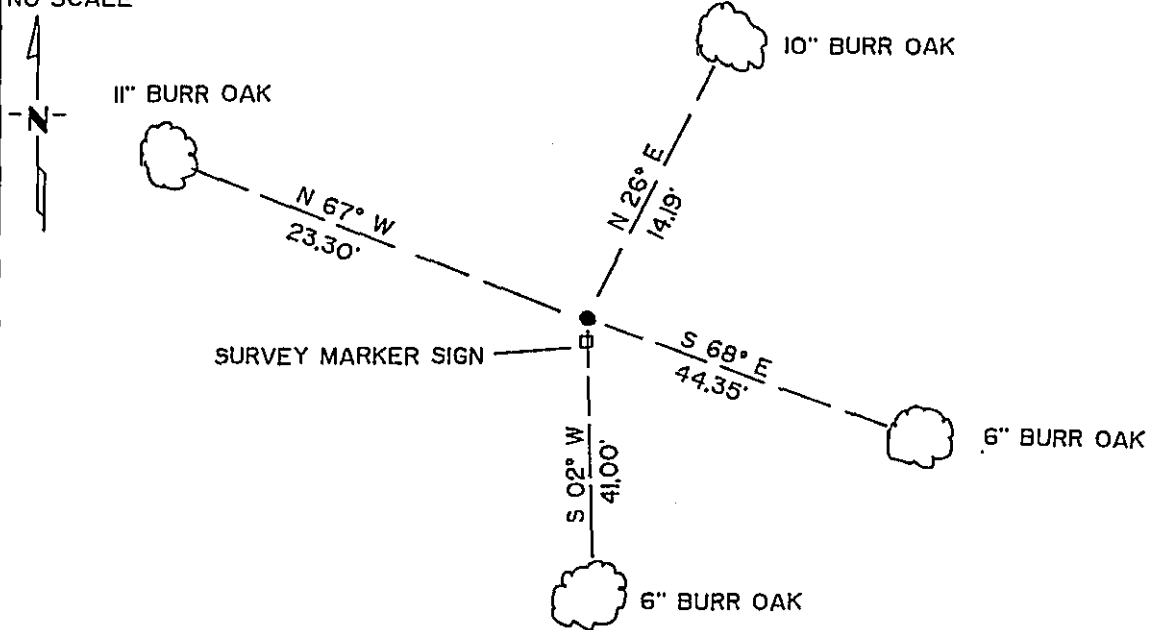
On \_\_\_\_\_ found a \_\_\_\_\_  
DATE

left monument as found,  lowered monument,  removed monument (explain)

On DEC. 21, 1987 placed a 2"X2" IRON 36" LONG, 12" ABOVE GROUND, AFFIXED AN  
DATE  
ALUMINUM CAP WITH S 1/4 21 MARKED.

NO SCALE

SKETCH OF REFERENCE TIES



NOTE: BEARINGS TO TREES ARE MAGNETIC.  
DISTANCES ARE TO DUPLEX NAILS IN SIDE OF TREES.  
ALL TREES ARE MARKED WITH DOUBLE BLAZES.

Statement of evidence relative to this corner location is on back of page. 302266

I hereby certify that this document and the data contained herein was prepared by me or under my direct supervision.

David A. Lindner 12/31/87  
SIGNATURE DATE

Registration No. 17008

- Land Surveyor  
 County Surveyor

OFFICE OF THE COUNTY RECORDER  
County of Cass

I hereby certify that this document was filed in the Co. Recorders office at 3:42 P.M. on the 13 day of January A.D., 19 88

County Recorder Clarence Kay  
By MS, Deputy

DOCUMENT NO. 302266

Statement of Evidence:

R-11

North Quarter Corner Section 28, Township 134 North Range 30 West, Cass County, Minnesota.

In 1868 the original government survey was done by N. Butler. A wood post was set to mark the corner. One bearing tree witnessing said corner was marked, noted as follows:

10" Poplar North 60 degrees East, 15 links.

Retired State of Minnesota area forester, Mr. Al Stark, reported seeing a wooden stake at corner location. Origin unknown.

In 1987 David Landecker RLS #17008 surveyor with the firm Landecker & Associates, Inc. searched for and found no evidence of said corner or bearing trees. The wooden stake reported by Mr. Al Stark was found in place about 60 feet Northerly of corner established by Landecker. The wooden stake was not accepted as the corner. A monument was set at this corner as noted on the face of this Certificate in accordance with State and Federal survey standards.

Landecker File Number 87109