

# CERTIFICATE OF LOCATION OF GOVERNMENT CORNER

NORTHEAST Corner of Section 23, Township 141 N, Range 28 W, 5th P.M.

STATE OF MINNESOTA, County of CASS

At the corner location shown on the sketch:

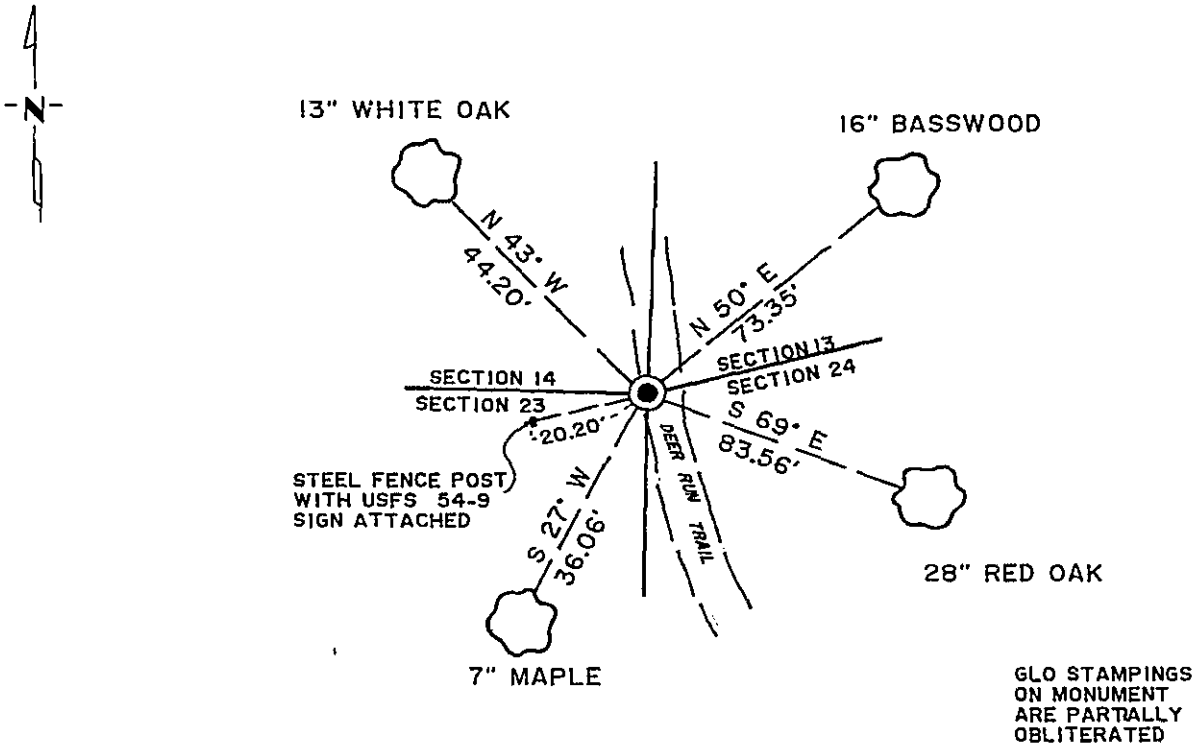
On 10-20-87 found a BRASS CAPPED MONUMENT  
DATE

left monument as found,  lowered monument,  removed monument (explain)

On \_\_\_\_\_ placed a \_\_\_\_\_  
DATE

MAG. DECL: 4 1/2° E

### SKETCH OF REFERENCE TIES



TIES SHOWN ARE TO 16d NAIL IN BASE OF TREE

Statement of evidence relative to this corner location is on back of page. 302185

I hereby certify that this survey, plan or report was prepared by me or under my direct supervision and that I am a duly Registered Land Surveyor under the laws of the State of Minnesota.

Roger A. Mustonen  
 Date 1/06/88 Registration No. 11946

OFFICE OF THE COUNTY RECORDER  
 County of Cass

I hereby certify that this document was filed in the Co. Recorders office at 2:20 P.M. on the 8 day of January A.D., 1988

County Recorder Claudia Kayler  
 By ms, Deputy  
 DOCUMENT NO. 302185

**Statement of Evidence:** Northeast Corner of Section 23, Township 141 North, Range 28 West of the 5th Principal Meridian.

- 1874 P. H. Conger, contract Surveyor for General Land Office, Set post for corner to Sections.. From which  
 Poplar 5 in N 25 E 37 lks.  
 Ironwood 6 in S 70 E 7 lks.  
 Ash 10 in N 41 W 45 lks.  
 W Pine 30 in S 4 W 36. lks.
- \*\*
- 1918 Earl G. Harrington, U.S. Cadastral Engineer, notes show:  
 The cor. of secs. 13, 14, 23 and 24, which is an old wooden stake, 4 x 4 x 24 ins., in addition to which I  
 Set an iron post, 3 ft long, 2 ins. diam., 26 ins. in the ground, with brass cap mkd...  
 From which the remains of the original bearing trees.  
 A poplar stump, 12 ins diam., bears N.21 $\frac{1}{4}$ <sup>o</sup>E. 37 lks, ... scribe marks obliterated, remains of blaze.  
 An Ash stump, 14 ins. diam., nears N.35 $\frac{1}{4}$ <sup>o</sup>W., 45 lks... evidence of scribe marks.  
 A white pine stump, 40 ins. diam., bears S.9 $\frac{1}{2}$ <sup>o</sup>W., 36 lks... mkd BT.  
 Take new bearing trees.  
 A basswood 10 ins. diam., bears N.55  $\frac{3}{4}$ <sup>o</sup>E., 110 lks.  
 A black oak, 14 ins. diam., bears S.62<sup>o</sup>E., 126 lks.  
 A black oak, 14 ins. diam., bears S.61 $\frac{1}{2}$ <sup>o</sup> W., 41 lks.  
 A black oak, 14 ins. diam., bears N.64  $\frac{3}{4}$ <sup>o</sup>W., 95 lks.
- 1961 John E. Howard, RLS 2383, surveyed and platted Government Lot 5 of Section 13, the land to the north of part of Section 24, and prepared a subdivision plat recorded as FABULOUS VIEW ACRES. On the plat is shown a monument marked for the corner.
- 1971 Robert F. Schneider, RLS 5740 surveyed and platted Govt. Lot 4 of Section 14, the land to the northwest of this corner, and prepared a subdivision plat recorded as WILDERNESS SHORES. On the plat is shown U.S.G.L.O. brass cap mon at this corner.
- 1972 See Certificate of Location of Govt. Cor. filed by Wm Okerman, #885, in 1972
- 1986 Gary H. Stevenson, RLS 12684, surveyed and platted Govt. Lot 6 of Section 24, and prepared a subdivision plat recorded as POINT OF VIEW. On the plat is shown U S G L O Brass Cap Mon. in place for this corner.
- 1987 Roger A. Mustonen, RLS 11946, under contract with USFS, found the G.L.O. monument 10" below grade and the SE Black Oak in good condition. Made new ties to a nail in the base of the trees shown, and accepts the monument as the perpetuation of the Northeast Corner of Section 23.
- \*1913 John Curo, County Surveyor, located corner and filed data in County Survey Record Book "A", Pages 564-567.
- \*\*1917 James H. Flynn, Surveyor, according to County records, found old Govt. BTs, W Pine stump, S4<sup>o</sup>W 36 lks., Poplar stub, N25<sup>o</sup>E 37 lks.