

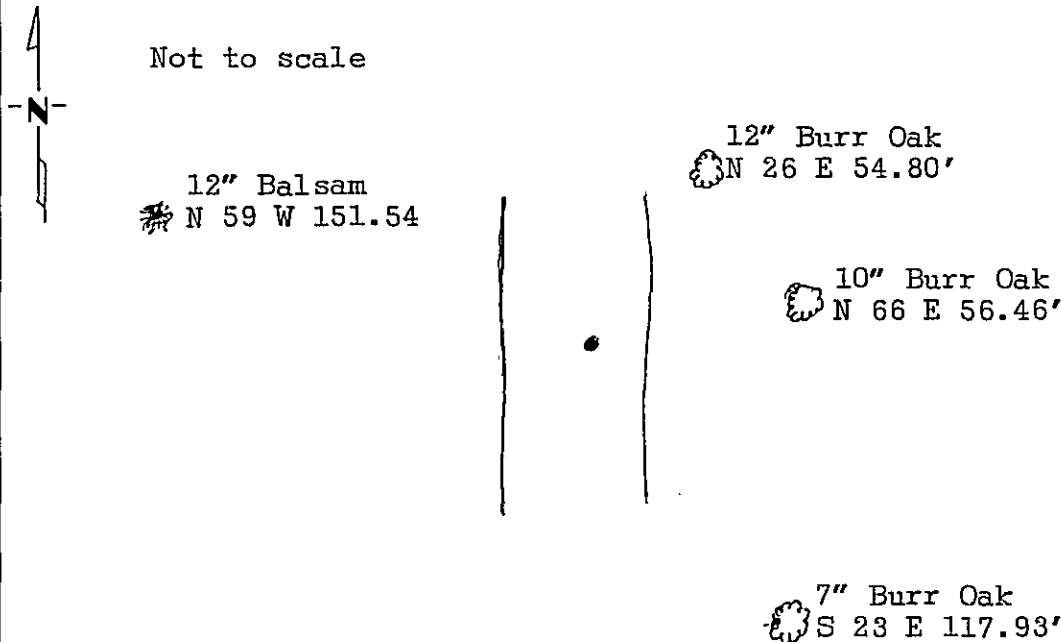
# CERTIFICATE OF LOCATION OF GOVERNMENT CORNER

Northeast Corner of Section 1, Township 141 N., Range 28 W., 5th P.M.  
 STATE OF MINNESOTA, County of CASS

At the corner location shown on the sketch:

- On \_\_\_\_\_ found a \_\_\_\_\_  
DATE
- left monument as found,  lowered monument,  removed monument (explain)
- On 12/29/87 placed a 2"x3' I.P. with marked brass cap  
DATE

### SKETCH OF REFERENCE TIES



Trees blazed, scribed, painted red and have 54-3 Bearing Tree tag.  
 Measurement taken to nail in side of tree.

Statement of evidence relative to this corner location is on back of page. 302166

I hereby certify that this document and the data contained herein was prepared by me or under my direct supervision.

Walter L. Cass 1-7-88  
SIGNATURE DATE

Registration No. 11395

- Land Surveyor
- County Surveyor

OFFICE OF THE COUNTY RECORDER  
 County of Cass

I hereby certify that this document was filed in the Co. Recorders office at 2:45 P. M. on the 7 day of January A.D., 1988

County Recorder Claudia Kay  
 By M.S., Deputy

DOCUMENT NO. 302166

Statement of Evidence: Northeast Corner Section 1, T.141 N., R.28 W., 5th P.M.

- 1873 US General Land Office survey set a wood post for this corner and marked the following bearing trees: 36" W. Pine N 55 E 12 lks., 30" W. Pine S 76 E 33 lks., 40" W. Pine S 7 E 30 lks., 12" BL. Oak N 6 W 105 lks.
- 1915 County Survey Record Book "B", page 572, shows a survey by N.D. Gorman. He found the corner in place.
- 1917 County Survey Record Book "B", pages 589-591, show a survey by J.H. Flynn. He found stumps of all the old Gov't BT's.
- 1917 County Survey Record Book "B", page 602, shows a survey by E.B. Horst. He found a 2½x48" I.M. and marked the following bearing trees: orig Bl. Oak stump N 61-30 W 66.5', 29" W. Pine stump S 33-15 W 99.55', 6" Aspen S 43-45 E 74', 7" Aspen N 82 E 52.5'
- 1918 US General Land Office dependent resurvey found a decayed wood stake and stumps of all 4 orig BT's. Set a 3"x36" I.P. with brass cap 36" in road. New Bt's: 16" Poplar N 61½ E 334 lks., 6" Birch S 58 3/4 E 295 lks., 14" W. Oak S 23 3/4 W 511 lks., 8" W. Pine N 51 3/4 W 355 lks.
- 1919 County Survey Record Book "C", page 347, shows a survey by E.B. Horst. He found the US I.M. and marked 2 BT's: 7" Aspen N 80 E 51', 7" Aspen S 44 E 71.4'
- 1972 US forest Service personnel searched for corner, but found no evidence.
- 1987 While under Forest Service contract surveying in Sections 1 & 2, Walt Curo finds no evidence of the corner. Found other 1918 GLO corners WEST and SOUTH of corner location. Determined corner position from these corners and set a 2"x36" I.P. with stamped brass cap. Marked new BT's as shown on front of this certificate.