

CERTIFICATE OF LOCATION OF GOVERNMENT CORNER

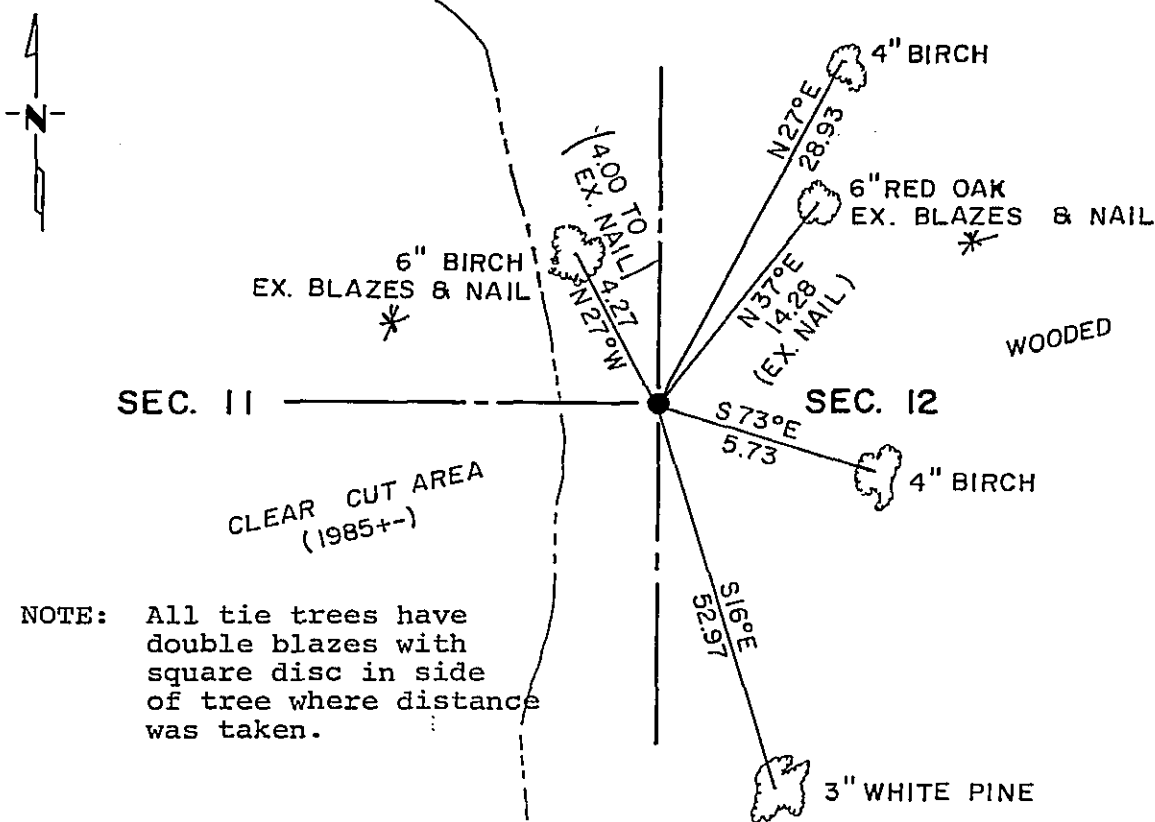
EAST QUARTER Corner of Section 11, Township 139, Range 30, 5th P.M.

STATE OF MINNESOTA, County of Cass

At the corner location shown on the sketch:

- On 1/5/87 found a 1 1/2" iron 2" above ground on East end
of ^{DATE} clear cut area
- left monument as found, lowered monument, removed monument (explain)
- On _____ placed a _____
DATE

SKETCH OF REFERENCE TIES



NOTE: All tie trees have double blazes with square disc in side of tree where distance was taken.

Statement of evidence relative to this corner location is on back of page. 298533

I hereby certify that this document and the data contained herein was prepared by me or under my direct supervision.

Daniel A. Lohman 6/24/87
SIGNATURE DATE

Registration No. 17008

- Land Surveyor, Professional Engineer
- County Surveyor, County Engineer

OFFICE OF THE COUNTY RECORDER
County of Cass

I hereby certify that this document was filed in the RECORDER'S office at 3:25 P.M. on the 29 day of July A.D., 19 87

COUNTY RECORDER Plumline Kayler

By ms, Deputy

DOCUMENT NO. 298533

Statement of Evidence:

East Quarter corner, Section 11, Township 139 North, Range 30 West, 5th P.M., Cass County, Minnesota.

- 1865 - U. S. General Land Office set a wood post for this corner and marked the following bearing trees:
6" white birch North 30 degrees East 7 lks, 5" norway pine South 75 degrees East 19 lks.
- 1925 - J. M. Greene sets this corner by single proportionate methods between the Northeast and Southeast corners of said Section 11. Notes in Book 190, Page 3 & 4 (Curo's records).
- 1984 - Cass County Land Department finds 1½" iron on top of hill.
- 1987 - Landecker & Associates, Inc., surveyors, while surveying in said Section 11 finds 1½" iron found by Cass County Land Department and also existing bearing trees as noted on reference sketch. Said monument checks with survey work done by Greene in 1925.