

CERTIFICATE OF LOCATION OF GOVERNMENT CORNER

East Quarter Corner of Section 16, Township 133 N., Range 31 W., 5th P.M.

STATE OF MINNESOTA, County of CASS

At the corner location shown on the sketch:

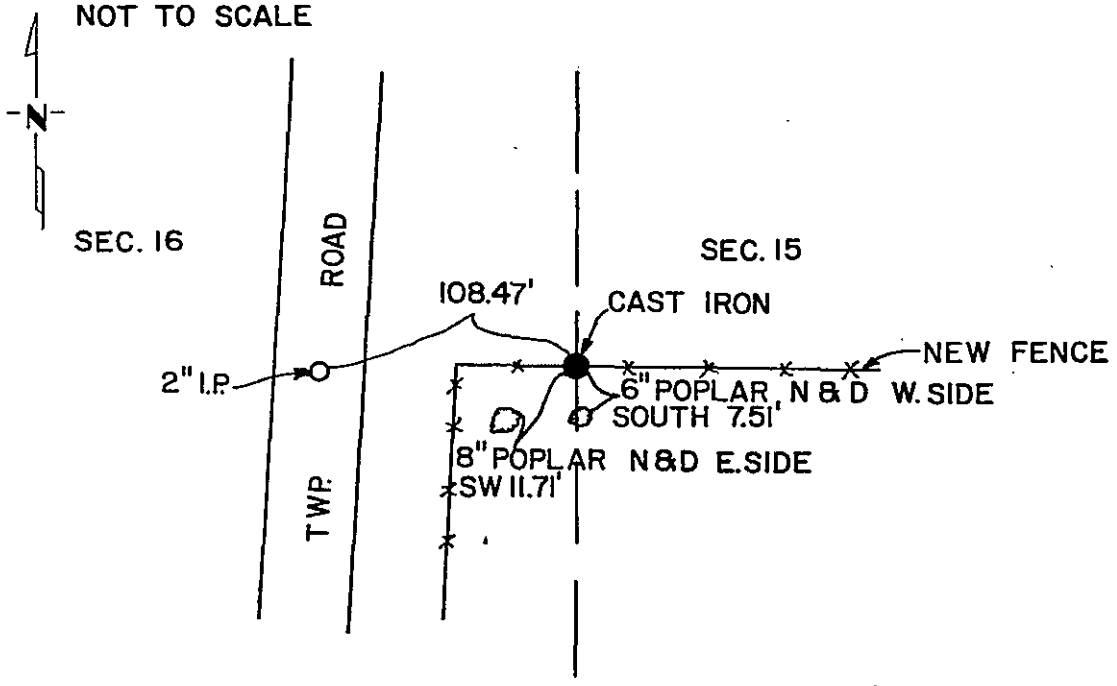
On 11/23/81 found a 2" iron pipe in township road
DATE

left monument as found, lowered monument, removed monument (explain)

On 5/20/82 placed a cast iron monument at lost position
DATE

SKETCH OF REFERENCE TIES

NOT TO SCALE



Statement of evidence relative to this corner location is on back of page. 298406

I hereby certify that this document and the data contained herein was prepared by me or under my direct supervision.

Alphonse P. Della 6/19/87
SIGNATURE DATE

Registration No. 11873
 Land Surveyor, Professional Engineer
 County Surveyor, County Engineer

OFFICE OF THE COUNTY RECORDER
County of Cass

I hereby certify that this document was filed in the Co. Recorders office at 4:15 P. .M. on the 23 day of July A.D., 19 87

County Recorder Claudia Kayser
By ms, Deputy

DOCUMENT NO. 298406

Statement of Evidence: East Quarter Corner Section 16, T. 133 N., R. 31 W., 5th P.M.

The original survey was done in 1863, a wood post was set to mark the corner and the following bearing trees were marked: 6" Aspen N 86°E 192 lks., 8" Aspen N 68°W 82 lks.

In 1915, Mr. John Greene, Cass County Surveyor, sent a crew to establish the west line of Section 15, to establish a township road. No monument was found and the corner was set at the lost position. This information can be found in County Record Book "C" page 87.

In 1981, the pipes as set in 1915 were recovered at the West Quarter corner and the Southwest corner of Section 15.

In 1982, a cast iron monument was set at a lost position, midway and on line between the new position at the Southwest corner of Section 15 and a computed position, based on the two irons from 1915, for the Northwest corner of Section 15. The position of the Northwest corner falls in T.H. # 210 and agrees closely to the position called for in the road plans.

For details relating to the shift in location of the Southwest corner of Section 15, see certificate of same.