

CERTIFICATE OF LOCATION OF GOVERNMENT CORNER

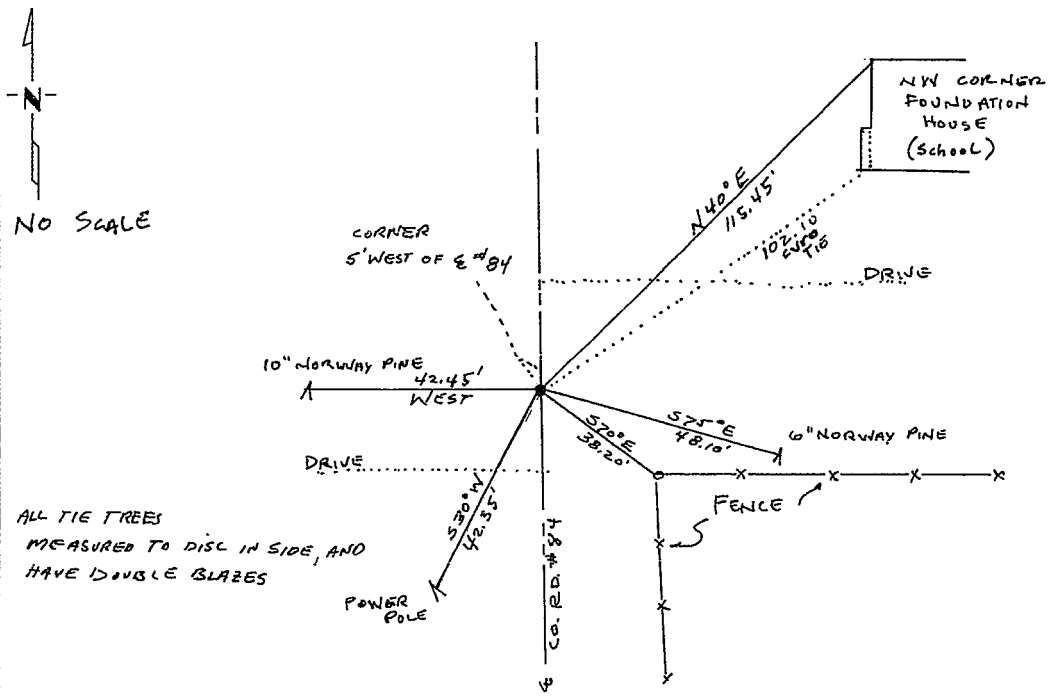
Southeast Corner of Section 3, Township 139, Range 29, 5th P.M.

STATE OF MINNESOTA, County of Cass

At the corner location shown on the sketch:

- On 7/14/81 found a 1 1/2" iron pipe 0.90' below bit surface 5'
West of centerline Highway #84
 left monument as found, lowered monument, removed monument (explain)
- On 7/14/81 placed a Large spike on surface bituminous surface
left 1 1/2" iron pipe below

SKETCH OF REFERENCE TIES



Statement of evidence relative to this corner location is on back of page. 297695

I hereby certify that this document and the data contained herein was prepared by me or under my direct supervision.

David S. Paulsen SIGNATURE 8/29/86 DATE

Registration No. 17008

- Land Surveyor, Professional Engineer
- County Surveyor, County Engineer

OFFICE OF THE COUNTY RECORDER
County of Cass

I hereby certify that this document was filed in the Co. Recorders office at 10:30 A.M. on the 22 day of June A.D., 19 87

County Recorder Claudia Kay
By ms, Deputy

DOCUMENT NO. 297695

Statement of Evidence:

Southeast corner of Section 3, Township 139 North, Range 29 West, Cass County, Minnesota.

The original Government Survey was done in 1865, a post was set establishing the corner thereof. No ties taken.

1912 - John Curo sets post proportionally. See notes in County Record Book B, page 200 - 211, microfilm, roll 15-S, book 271, page 23.

1920 - J. F. Flynn finds oak post set by Curo in 1912, microfilm roll 12-S, book 170-B, page 56, and also County Book C, Page 359.

1932 - Greene set iron pipe from 1912 Curo bearing; school house Northeast, and Jackpine Northeast.

1981 and again in 1986 - David Landecker, RLS 17008, Landecker & Associates, Inc. finds iron pipe set by Greene in 1932 which also fits to schoolhouse bearing and distances shown on 1912 Curo survey to other section corners, and therefore Landecker & Associates, Inc. accepts this corner as a perpetuation of the corner as established by Curo and used in following surveys.