

CERTIFICATE OF LOCATION OF GOVERNMENT CORNER

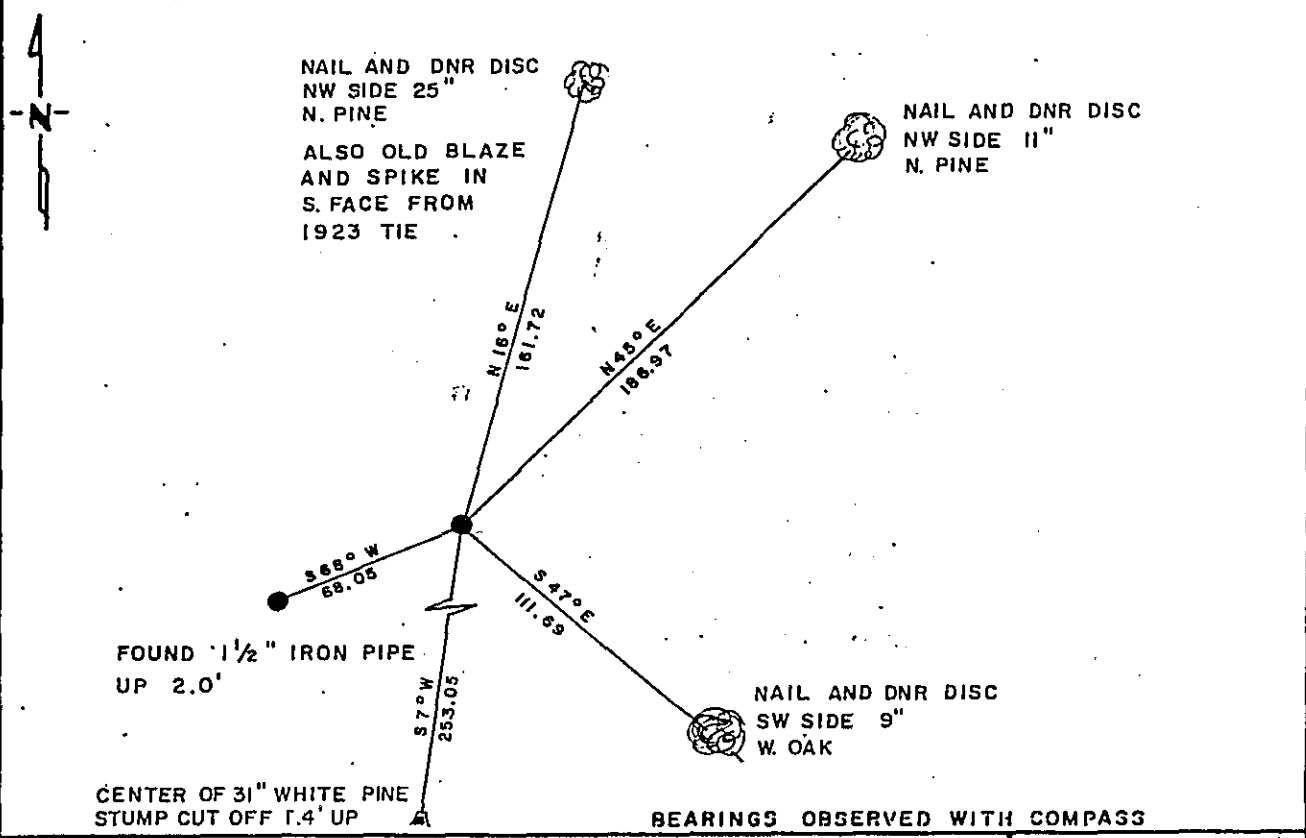
EAST QUARTER Corner of Section 16, Township 140 N., Range 26 W., 5th P.M.

STATE OF MINNESOTA, County of CASS

At the corner location shown on the sketch:

- On 11-05-81 found a 2 1/2" OUTSIDE DIAMETER IRON PIPE WITH 3" DIAMETER ALUMINUM CAP WITH AN "X" IN THE CENTER, UP 3.0'
 left monument as found, lowered monument, removed monument (explain)
- On _____ placed a _____

SKETCH OF REFERENCE TIES



BEARINGS OBSERVED WITH COMPASS

Statement of evidence relative to this corner location is on back of page. J.A.W 6-30-86 A-414

I hereby certify that this document and the data contained herein was prepared by me or under my direct supervision.

Bert R. Funderud 11-25-86
 SIGNATURE DATE

Registration No. 10516

Land Surveyor, Professional Engineer
 County Surveyor, County Engineer

OFFICE OF THE COUNTY RECORDER 297686
 County of Cass

I hereby certify that this document was filed in the Co. Recorders office at 7:10 P.M. on the 22 day of June A.D., 1987

County Recorder Claudia Kayler
 By M S, Deputy

DOCUMENT NO. 297686

East Quarter Corner Section 16, Township 140 North, Range 26 West

This corner was originally established by the U.S. General Land Office survey in 1871. The government notes show the corner is in a pond with a witness corner set 2.70 chains North marked with a wood post, and the following bearing trees:

- 8" Norway Pine, N. 47° W., 12 links (7.92 feet)
- 10" Norway Pine, S. 18° E., 21 links (13.86 feet)

In November 1981, the DNR Bureau of Engineering contacted the following for corner information:

- Cass County Offices of the Recorder and Surveyor
- Gary H. Stevenson and Associates, Inc. of Walker
- Wallace F. Buckler of Crosby
- Landecker and Associates, Inc. of Pequot Lakes
- Washburn Lake DNR Forestry Office

Microfilm Roll Number 12 found in the County Surveyor's Office contains Curo's Field Book 151 and the following is shown on Pages 81 thru 98:

In 1923, John Greene searched for but found no evidence of the corner. The corner was established lost using the southeast corner of Section 16 and meander corner number 24. Greene does not indicate what was set to mark corner but the following ties are shown to it:

- 12" Norway Pine, N. 20° 26' E., 164.5 feet
- 24" White Pine, S. 12° 03' W., 248.1 feet
- 2681.8 feet from the southeast corner of Section 16
- 1427.0 feet from meander corner number 24

Greene also shows that a temporary corner was set 2640 feet from the southeast corner of Section 16, but does not describe monument.

The following information was obtained from the Washburn Lake DNR Forestry Office:

- Civilian Conservation Corps Field Book 3 on Pages 45 and 48 dated February 1936, show a square stake at corner south of an east-west fence but does not indicate if it was found or set. The corner is shown:
 - 2640 feet from the southeast corner of Section 16
 - 1452 feet from meander corner number 24

The following information was obtained from the County Recorder's Office:
The plat of DEL-RAY POINT by J. George Dean in 1949 shows that an iron monument was found at corner. The corner is shown:
1367.8 feet southerly of an iron monument in the area of meander corner number 24

The following information was obtained from Wallace F. Buckler:
An undated worksheet of a survey in Section 15 shows that a 2-inch diameter aluminum-capped iron pipe was set for the corner. The corner was established at the intersection of lines from the southeast corner of Section 16 to meander corner number 24 and on the westerly extension of a line from the east quarter corner of Section 15 through a found concrete monument 1762.27 feet from it. The following ties are shown to corner:
28" Norway Pine, N.30° E., 160.62 feet
found iron pipe, southwest, 68.21 feet
1420.96 feet from meander corner number 24

East Quarter Corner Section 16, Township 140 North, Range 26 West

2684.38 feet from the southeast corner of Section 16
5467.79 feet from the east quarter corner of Section 15

The following information was obtained from Landecker and Associates, Inc.:

A 1983 survey of part of Government Lot 7 in Section 15 shows that a 2-inch iron was found at corner. The corner is shown:

1423.03 feet from meander corner number 24

In November 1981, the DNR Bureau of Engineering traversed to the area of the corner and found a 2-1/2" outside diameter iron pipe with a 3" diameter aluminum can with an "x" on it. Searched 178 feet north of iron pipe for evidence of the witness corner and the GLO bearing trees but found nothing. Searched for and found record ties as shown on sketch of ties. The capped iron pipe was found to be:

2684.19 feet from the southeast corner of Section 16

1422.90 feet from meander corner number 24

The lost position for corner was computed using GLO distances and was found to be:

2680.00 feet from the southeast corner of Section 16

1427.10 feet from meander corner number 24

0.28 of a foot east and 4.20 feet south of the capped iron pipe

165.7 feet from the Norway Pine used as a tie in 1923

The iron pipe used as a tie for corner was found to be 2639.19 feet from the southeast corner of Section 16.

In April 1985, the DNR Bureau of Engineering contacted Wallace P. Buckler of Crosby and told him what was found at corner and how the lost position compares with the capped iron pipe. Mr. Buckler said that he was aware of the 1923 survey by Greene when he conducted his survey in Section 15 and that the concrete monument he used to establish the corner was set by Schneider.

Accept the capped iron pipe as the location of the corner.

Traverse information is available from the DNR Bureau of Engineering.