

CERTIFICATE OF LOCATION OF GOVERNMENT CORNER

Northeast Corner of Section 21, Township 135 N., Range 32 W., 5th P.M.

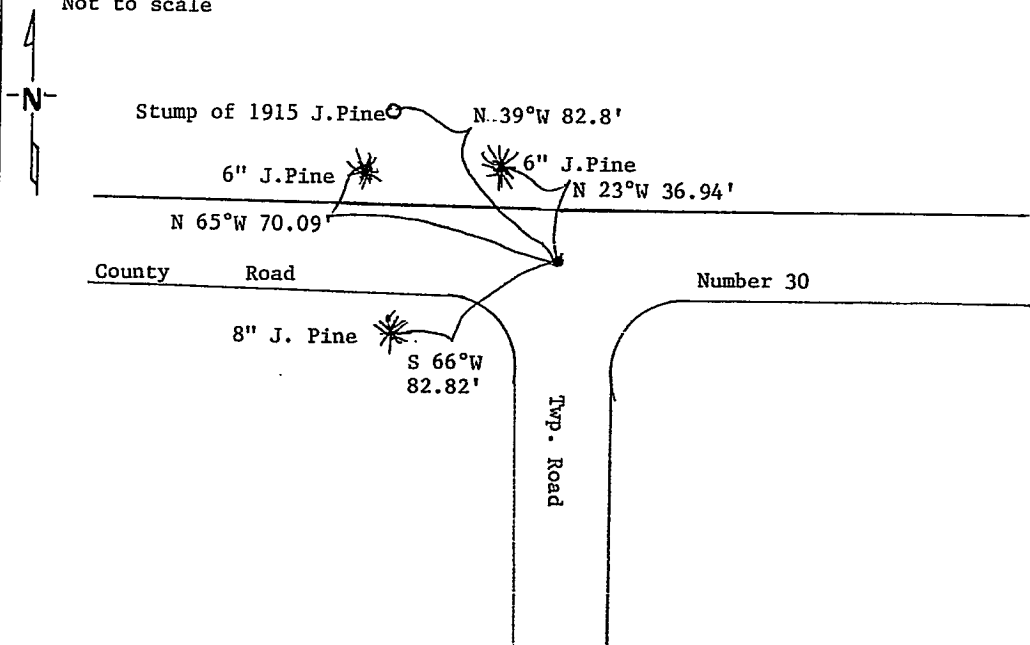
STATE OF MINNESOTA, County of CASS

At the corner location shown on the sketch:

- On 8/30/85 found a 1 1/2" I.P. down 0.1', 4.5' S. of g rd E., in line with g rds S & W, also stump of 1915 J. Pine NW
DATE
 - left monument as found, lowered monument, removed monument (explain)
- On 7/29/86 placed a County cast iron monument down 8"
DATE

SKETCH OF REFERENCE TIES

Not to scale



Distances to nail in side of tree
Bearings assumed using 5° declination

Statement of evidence relative to this corner location is on back of page. 297498

I hereby certify that this document and the data contained herein was prepared by me or under my direct supervision.

Walter E. Coates 1-22-87
SIGNATURE DATE

Registration No. 11395

- Land Surveyor, Professional Engineer
- County Surveyor, County Engineer

OFFICE OF THE REGISTER OF DEEDS

County of Cass

I hereby certify that this document was filed in the Reg. of Deeds office at 9:15 A .M. on the 12 day of June A.D., 1987

Register of Deeds Clairine Kozler
 By ms Deputy

DOCUMENT NO. 297498

STATEMENT OF EVIDENCE Northeast Corner Section 21, T. 135 N., R. 32 W., 5th P.M.

- 1866 U.S. General Land Office survey set a wood post for this corner and marked the following bearing trees: 8" Bl Pine N 59°E 136 lks., 8" Bl Pine N 4°W 149 lks., 6" Bl. Pine S 29½°W 195 lks.
- 1915 County Survey Record Book "C", page 571, shows a survey by Roy Bryant. He found the stump of the 8" Bl. Pine N 4°W 149 lks and set the corner.
- 1915 County Survey Record Book "C", page 47, shows a survey by E.B. Horst. He found the corner set by Bryant and set a 1½" x 48" iron monument and marked the following bearings: 9" Bl. Pine SW 36.6', 9" J. Pine SE 61.1', 8" J.Pine N 51°E 97', 9" J.Pine N 39°W 82.8'
- 1920 County Survey Record Book "C", page 367, shows a survey by E.B. Horst. He found the corner.
- 1985 On August 30, Terry Freeman, Cass County Survey Technician, and Dan Marcum, County Forester, found a 1½" I.P., down 0.1', 4.5' S. of centerline E. and in line with centerlines S & W. Also found stump of 1915 B.T.: J.Pine N 39°W 82.8'
Marked the following bearings:
8" J.Pine S 66°W 82.82'
8" J.Pine N 23°W 36.94'
6" J.Pine N 65°W 70.09'
- 1986 On July 29, Terry Freeman and Dan Gordon replaced the 1½" I.P. with a County cast iron monument, set down 8". 1985 Bearings in good shape.

The Cass County Surveyors Office accepts the found iron and stump of 1915 B.T. as perpetuation of the original governeemnt corner position.