

# CERTIFICATE OF LOCATION OF GOVERNMENT CORNER

NORTHEAST

Corner of Section 17, Township 140, Range 26, 5th P.M.

STATE OF MINNESOTA, County of CASS

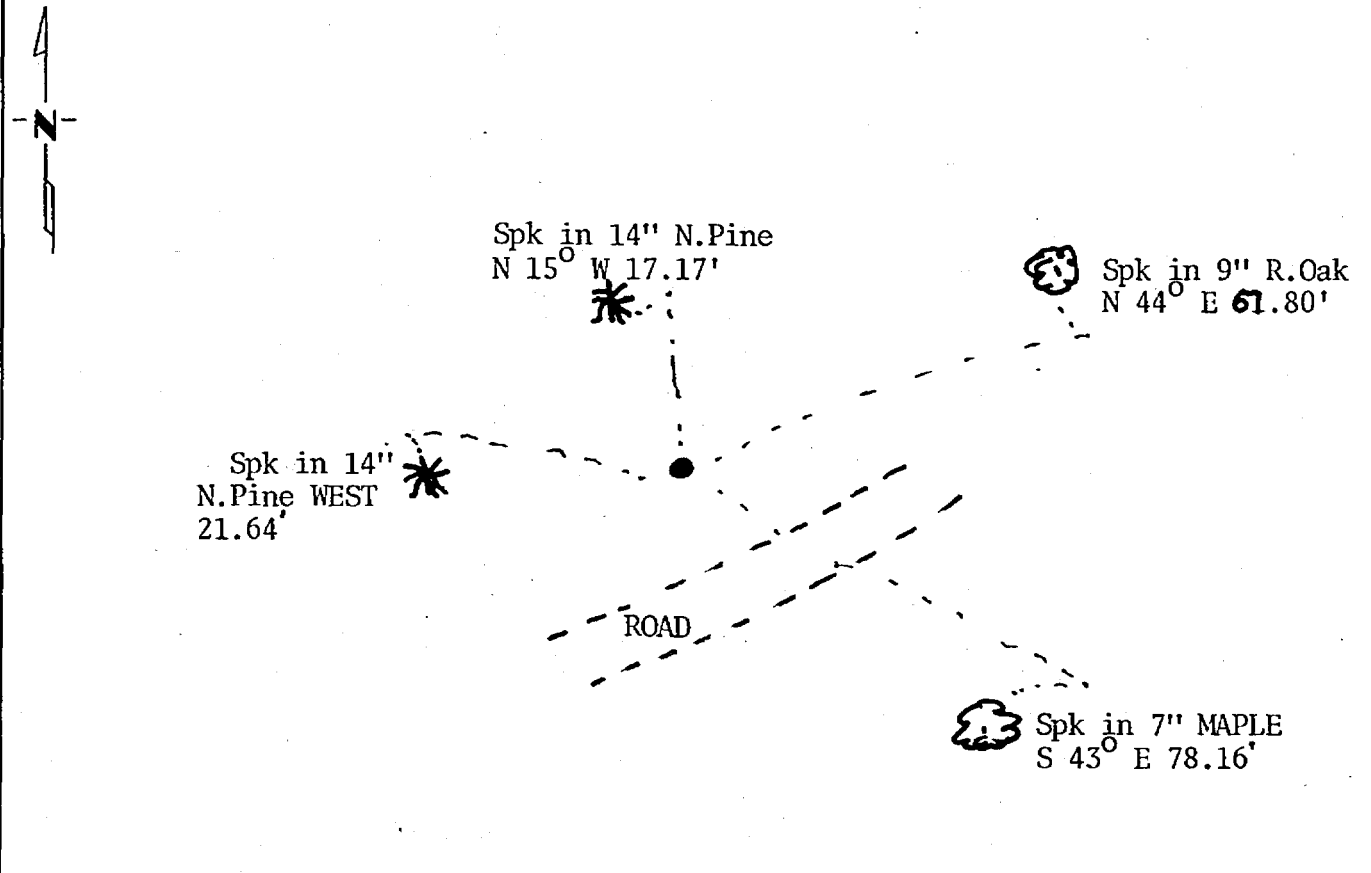
At the corner location shown on the sketch:

On 10-26-83 found a well point

left monument as found,  lowered monument,  removed monument (explain)

On 10-26-83 placed a county cast iron monument

## SKETCH OF REFERENCE TIES



BEARINGS ARE APPROXIMATE

Statement of evidence relative to this corner location is on back of page. 295288

I hereby certify that this document and the data contained herein was prepared by me or under my direct supervision.

Mary H. Atener 2/7/87  
SIGNATURE DATE

Registration No. 12604

Land Surveyor,  Professional Engineer

County Surveyor,  County Engineer

OFFICE OF THE COUNTY RECORDER  
 County of Cass

I hereby certify that this document was filed in the Co. Recorders office at 4:10 P.M. on the 25 day of February A.D., 19 87

County Recorder Claudine Kayler  
 By MS, Deputy

DOCUMENT NO. 295288

Statement of Evidence:

- 1871 - U.S. General Land Office survey set wood post with bearing trees marked:  
14" Norway Pine N 15<sup>o</sup> E 55 links  
14" Norway Pine S 27<sup>o</sup> W 16 links  
14" Norway Pine N 60<sup>o</sup> W 70 links
- 1938 - CCC notes at DNR Washburn Lake Forestry Station show pump strainer found at section corner.
- 1951 - County Surveyor's Record Book D on page 380 shows H. Curo found pump point at corner in 1951 and took the following ties: 14" Norway Pine N 0<sup>o</sup> 13' W 16.6', 5" Poplar N 53<sup>o</sup> 13' E 29.6', 18" Jack Pine S 55<sup>o</sup> 03' W 37.8', and 9" Poplar S 41<sup>o</sup> 05' E 29.95'.
- 1979 - Found 2" well point up 1½' <sup>+</sup>, which checked with 1951 ties. Distances west and north to old lake bank and east to pond check reasonably well with the GLO notes. Found no evidence of the GLO bearing trees.
- 1983 - Replaced well point with 4" Cast Iron Monument and took ties as shown on this Certificate.
- 1953 - County Surveyor's Record Book D page 424 shows H. Curo found corner and 1951 ties.