

CERTIFICATE OF LOCATION OF GOVERNMENT CORNER

EAST QUARTER Corner of Section 11, Township 140, Range 28, 5th P.M.

STATE OF MINNESOTA, County of CASS

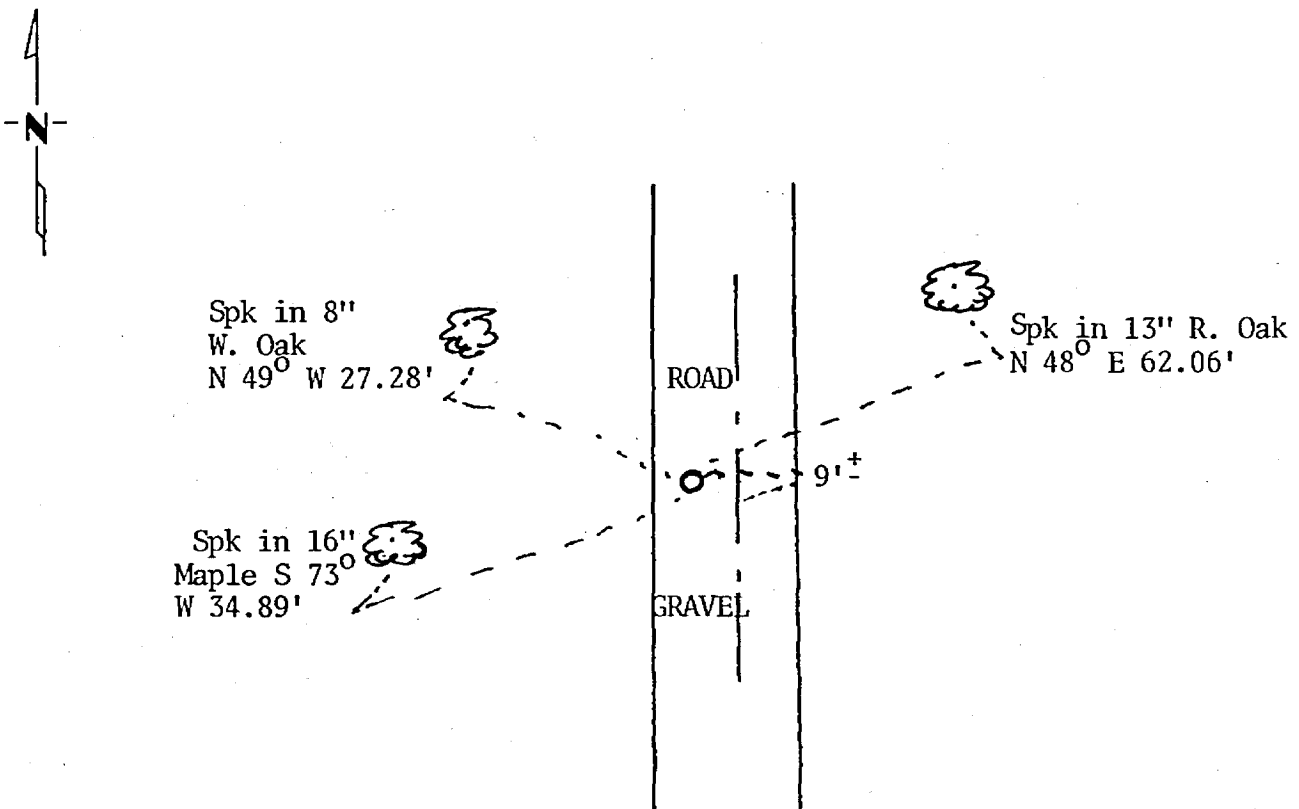
At the corner location shown on the sketch:

On 10-25-83 found a iron pipe
DATE

left monument as found, lowered monument, removed monument (explain)

On 10-25-83 placed a county cast iron monument 8" below road surface.
DATE

SKETCH OF REFERENCE TIES



BEARINGS ARE APPROXIMATE

Statement of evidence relative to this corner location is on back of page. 295284

I hereby certify that this document and the data contained herein was prepared by me or under my direct supervision.

Gay H. Stever 2/21/87
SIGNATURE DATE

Registration No. 12684

Land Surveyor, Professional Engineer

County Surveyor, County Engineer

OFFICE OF THE COUNTY RECORDER

County of can

I hereby certify that this document was filed in the Co. Recorders office at 3:30 P.M. on the 25 day of february A.D., 1987

County Recorder Cloudine Kayler

By MS, Deputy

DOCUMENT NO. 295284

Statement of Evidence:

- 1870 - U.S. General Land Office survey (set wood post) for this corner and marked the following bearing trees: 7" Rock Maple N 57° E 17 links and 8" Rock Maple S 60° W 42 links.
- No date - County Surveyor's Record Book D page 191 show survey by Ben Clark. Survey shows oak post 3" x 42" set. New BTs: 5" Ironwood S 33° E 30 feet and 9" Maple S 40° W 33 feet.
- 1941 - Field notes by CCC from Washburn Lake forestry station show approximate corner set by measurement from approximate section corner and an iron pipe found 112 feet north.
- 1965 - County Surveyor's Record Book D page 440 show survey by R.F. Schneider. Information shows iron pipe found and new ties taken as follows: 12" Maple S 77° W 34.3', 10" Maple S 22° E 27.5', and 16" Maple S 85° E 39.35'.
- 1983 - Found iron pipe referred to by Schneider. Also found 15" Maple S 40° W 31.5 feet that appeared to be Clark's BT. Replaced pipe with County cast iron monument and took ties as shown on this certificate.