

CERTIFICATE OF LOCATION OF GOVERNMENT CORNER

NORTHEAST Corner of Section 4, Township 142, Range 26, 5th P.M.

STATE OF MINNESOTA, County of CASS

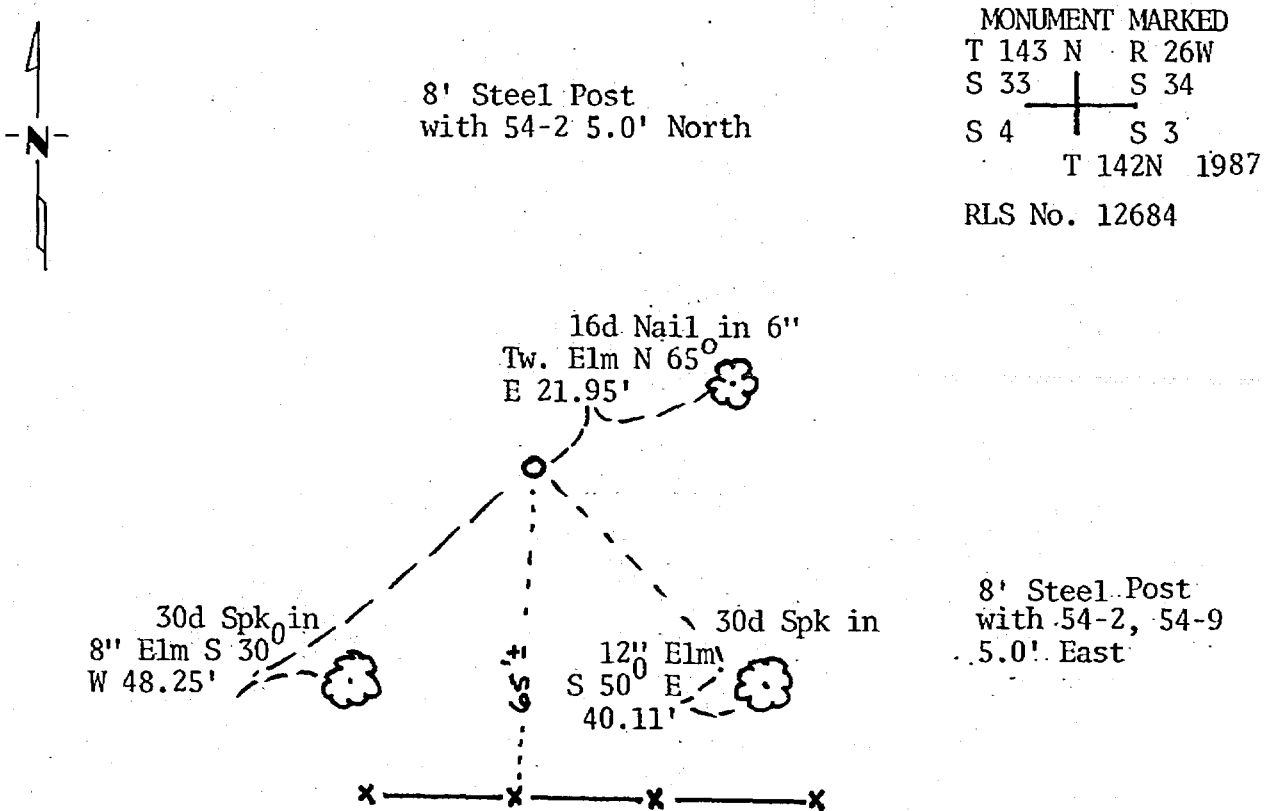
At the corner location shown on the sketch:

On 11/25/86 found a 2" x 48" iron pipe
DATE

left monument as found, lowered monument, removed monument (explain)

On 2/9/87 placed a 2" x 48" Galv. iron pipe with 3" marked brass cap
DATE

SKETCH OF REFERENCE TIES



ALL TREES ARE DOUBLE BLAZED, SCRIBED & PAINTED RED WITH 54-3 TAG
 BEARINGS ARE APPROXIMATE

Statement of evidence relative to this corner location is on back of page. 295273

I hereby certify that this document and the data contained herein was prepared by me or under my direct supervision.

Mary H. Steiner 2/21/87
SIGNATURE DATE

Registration No. 12684

- Land Surveyor, Professional Engineer
 County Surveyor, County Engineer

OFFICE OF THE COUNTY RECORDER

County of Cass

I hereby certify that this document was filed in the Co. Recorders office at 1:40 P.M. on the 25 day of February A.D., 1987

County Recorder Cloudiva Kayler
 By MS Deputy

DOCUMENT NO. 295273

Statement of Evidence:

- 1872 - U.S. General Land Office survey (set wood post) for this corner and marked the following bearing trees: 14" Cedar N 35° E 11 links, 12" Cedar N 6° W 19 links, 12" Cedar S 80° E 12 links, and 10" Cedar S 32° W 4 links.
- 1915 - County Surveyor's Record Book B pages 532 and 533 show survey by John Greene. The survey shows the corner was found "very plain" with all 4 bearing trees found.
- 1916 - County Surveyor's field book No. 68 on pages 24 thru 28 shows survey by E.B. Horst. Notes state that original stake found at corner and all 4 bearing trees plainly marked. An iron monument was set at the corner with bearing trees: 6" Cedar N 87°-30' W 20.3', 6" Cedar N 79° E 24', 5" Cedar S 77° W 27.7', and 6" Cedar S 10° E 18.6'.
- 1940 - U.S. Forest Service records from the CCC's show an iron pipe found at the corner. A metal poster was placed on a 12" Cedar snag from which the pipe bears North 14 links.
- 1979 - U.S. Forest Service technician M. Hayes found the iron pipe and the 1940 metal poster. No conclusive evidence of original bearing trees was found. One Cedar stump to the east fit for distance, but not bearing. Pipe was found about 65 feet north of an east-west fence. Hayes took testimony from ^{previous} landowner Donald Jacobson. Mr. Jacobson stated he built the fence in 1964-1965 and at that time did not know where the corner was.
- 1985 - USFS Surveyor, Ken Whitehorn, traverse south line of Sec. 34, 143-26, and tied the pipe into the traverse.
- 1987 - I ran traverse around Sec. 3 and accepted the pipe found as the one set by Horst in 1916 at the original corner position. On 2/9/87 we removed 2" x 48" iron pipe and reset 2" x 48" galvanized iron pipe with 3" marked brass cap in same position. Ties were taken as shown on this Certificate and steel sign posts were set 5.0' East and 5.0' North.

NOTE: Hayes did not have the 1916 notes of Horst.