

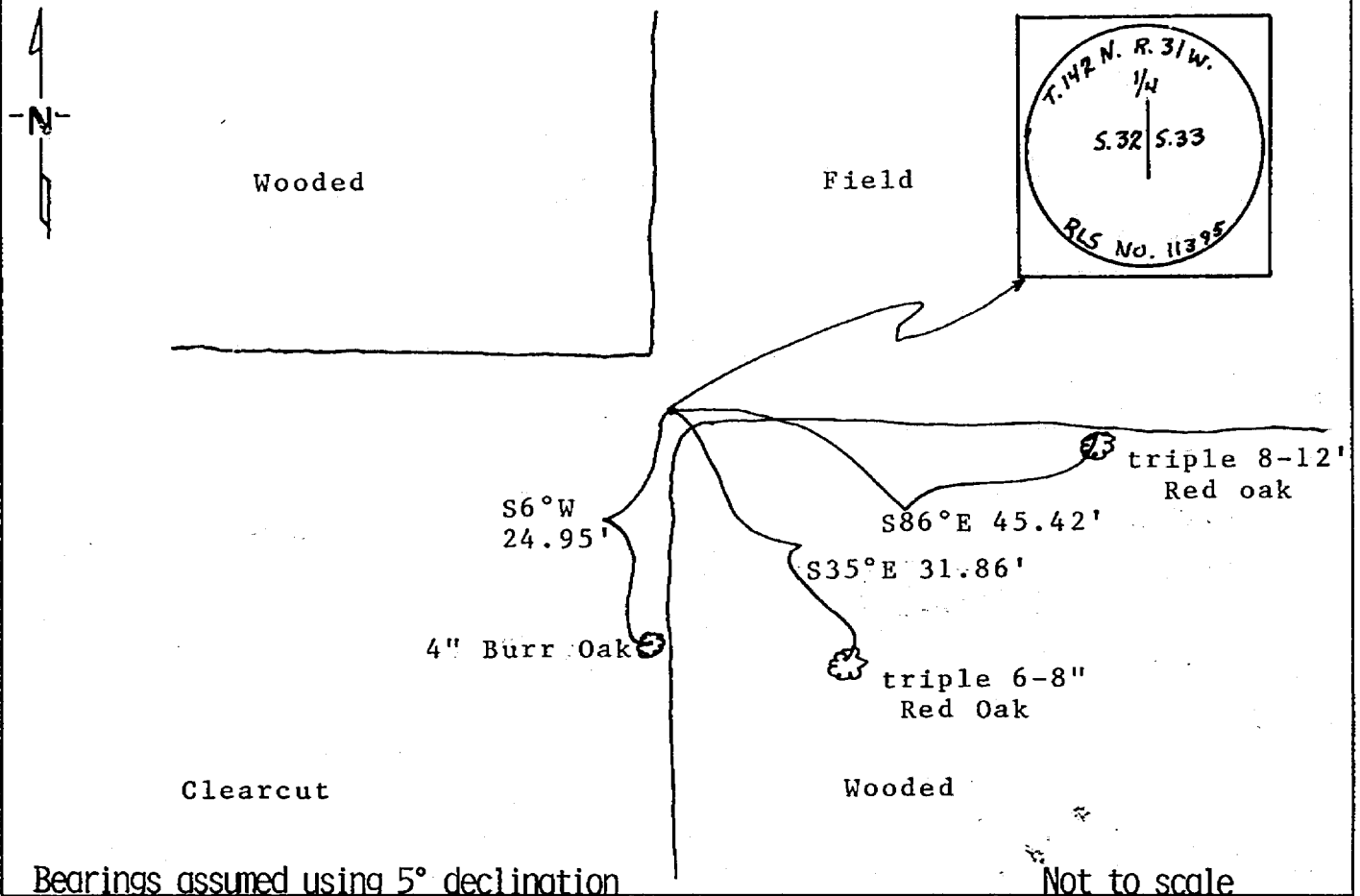
# CERTIFICATE OF LOCATION OF GOVERNMENT CORNER

East Quarter Corner of Section 32, Township 142 N., Range 31 W., 5th P.M.  
STATE OF MINNESOTA, County of CASS

At the corner location shown on the sketch:

- On 3/29/84 found a 2" I.P. leaning westerly, monument was later torn up  
DATE
- left monument as found,  lowered monument,  removed monument (explain)
- On 8/13/85 placed a 2x2x36" iron with stamped aluminum cap, up 1'  
DATE

### SKETCH OF REFERENCE TIES



Bearings assumed using 5° declination

Not to scale

Statement of evidence relative to this corner location is on back of page. 292691

I hereby certify that this document and the data contained herein was prepared by me or under my direct supervision.

Walter E. Brown 8-29-85  
SIGNATURE DATE

Registration No. 11395

- Land Surveyor,  Professional Engineer
- County Surveyor,  County Engineer

OFFICE OF THE REGISTER OF DEEDS

County of Cass

I hereby certify that this document was filed in the Reg. of Deeds office at 2:40 P.M. on the 28 day of Oct. A.D., 19 86

Register of Deeds Claudia Kayser

By MS, Deputy

DOCUMENT NO. 292691

STATEMENT OF EVIDENCE

E. Quarter Corner Sec. 32, T. 142 N., R. 31 W., 5th P.M.

- 1873 U.S. General Land Office survey set a wood post for this corner and marked the following bearings: 4" Poplar S 19°W 17 lks., 3" Birch N 87°E 7 lks.
- 1919 County Survey Record Book "C" page 499, shows a survey by E.B. Horst. He found an iron monument.
- 1919 County Resurvey plat by E.B. Horst shows an iron monument.
- 1925 County Resurvey plat by John Green shows an iron monument.
- 1984 Terry Freeman, Survey Technician and Dennis Hummitzsch, Forester, found I.P. up 2', leaning westerly. Measured south and west to other pipes set in 1919, distances check well.
- 1985 I.P. torn out. On August 13, Terry Freeman and Dennis Hummitzsch set 2x2x36" iron with stamped aluminum cap, survey marker sign 2' south and placed aluminum tags on the following bearing trees: 4" Burr Oak S 6°W 24.95', triple 6"-8" Red Oak S 35°E 31.86', triple 8"-12" Red Oak S 86°E 45.42'