

CERTIFICATE OF LOCATION OF GOVERNMENT CORNER

Northeast Corner of Section 30, Township 145 N., Range 28 W., 5th P.M.

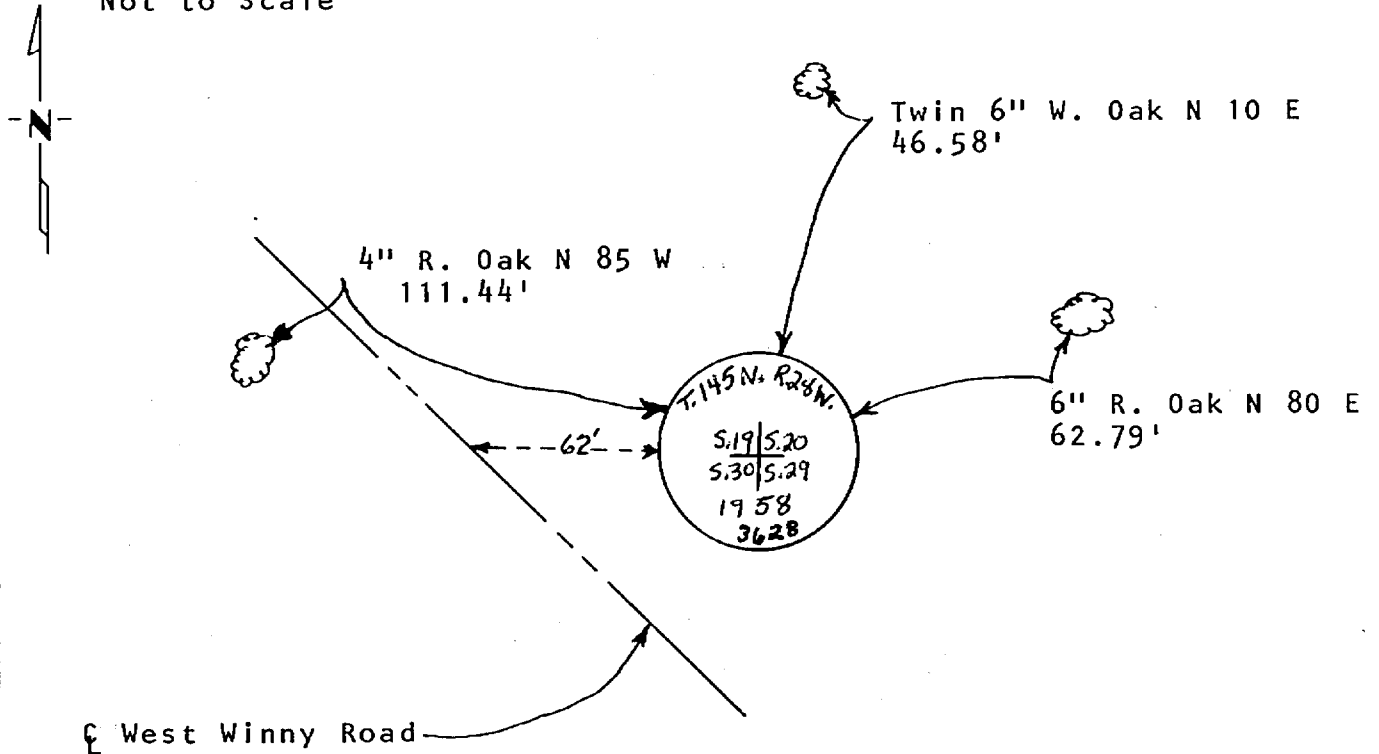
STATE OF MINNESOTA, County of CASS

At the corner location shown on the sketch:

- On 8-11-86 found a 6" concrete cylinder with brass cap, in power line clearing.
 left monument as found, lowered monument, removed monument (explain)
- On _____ placed a _____
DATE

SKETCH OF REFERENCE TIES

Not to Scale



All measurements are to spks. in side of tree, trees are double blazed, scribed and painted red, with USFS 54-3 bearing tree tags attached.

Statement of evidence relative to this corner location is on back of page. 291437

I hereby certify that this document and the data contained herein was prepared by me or under my direct supervision.

Walter E. Leno 9-10-86
SIGNATURE DATE

Registration No. 11395

- Land Surveyor, Professional Engineer
- County Surveyor, County Engineer

OFFICE OF THE COUNTY RECORDER

County of Cass

I hereby certify that this document was filed in the Co. Recorders office at 10:30 A.M. on the 15 day of Sept. A.D., 19 86

County Recorder Claudine Kayser

By MS, Deputy

DOCUMENT NO. 291437

Statement of Evidence: Northeast Corner Section 30, T. 145 N., R 28 W.,
5th P.M.

- 1873 U.S. General Land Office survey set a wood post for this corner and marked the following bearing trees: 6" J. Pine N 70 W 32 lks., 7" J. Pine N 13½ E 19 lks., 8" J. Pine S 33 E 82 lks.
- 1937 USFS found oak post and orig. SE BT and scribed two new bearing trees: 10" J. Pine N 87 W 89.1', 5" J. Pine S 20 E 33'.
- 1958 Pete Meyer; USFS, found BT's scribed in 1937. Set 6" x 60" concrete monument with bronze cap, marked two new trees: 11" J. Pine S 48 E 35.6', 11" J. Pine N 31 E 31.1' and filed a Certificate of Location of Government Corner.
- 1979 MN Dept. of Natural Resources survey crew found monument set by Meyer in 1958.
- 1986 On August 11, Walter E. Curo found 6" concrete cylinder in place, in power line clearing, East of West Winny Road. Marked new bearings: 6" Twin White Oak N 10 E 46.58', 6" R. Oak N 80 E 62.79', 4" R. Oak N 85 W 111.44', old 5' steel sign post West 4.70, new 8" steel sign post North 3.93'. He files this certificate to update 1958 Meyer certificate.