

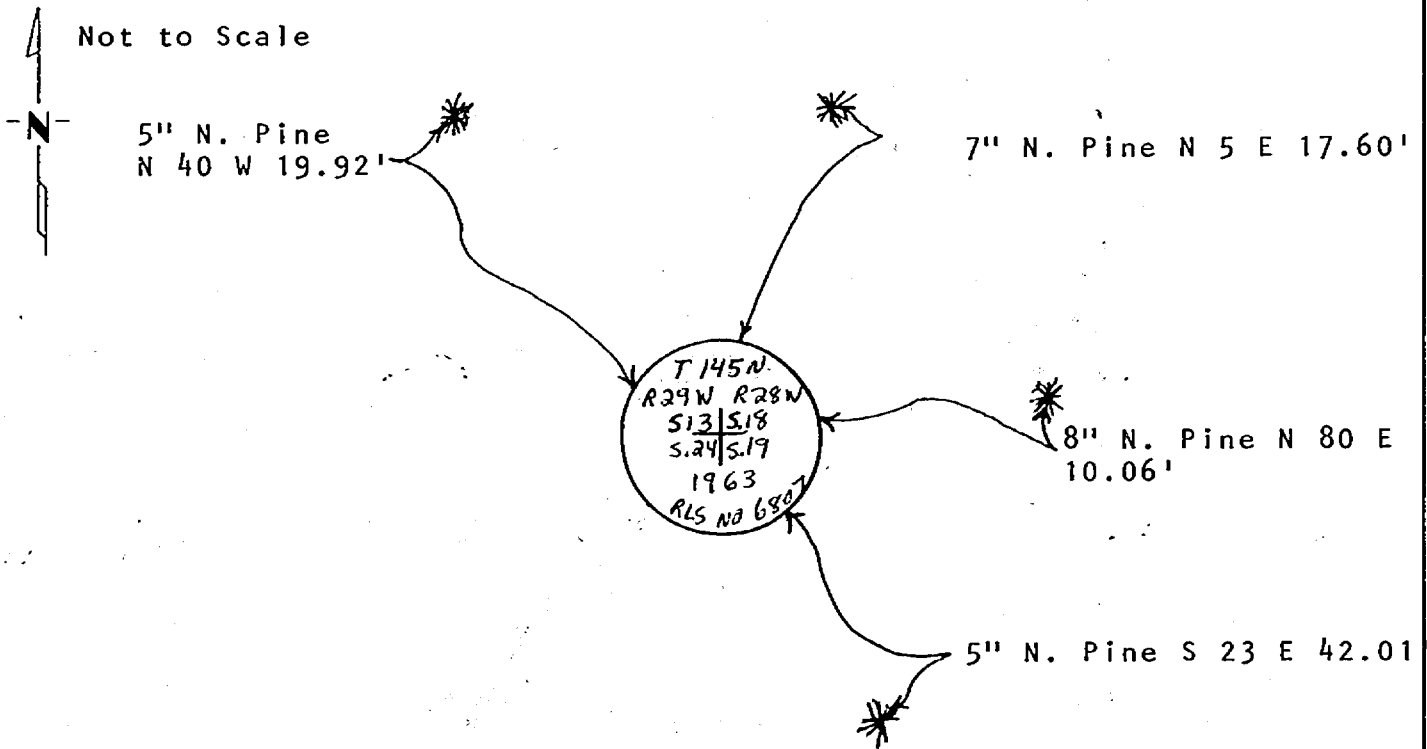
# CERTIFICATE OF LOCATION OF GOVERNMENT CORNER

Northeast Corner of Section 24, Township 145 N., Range 29 W., 5th P.M.  
STATE OF MINNESOTA, County of CASS

At the corner location shown on the sketch:

- On 8-22-86 found a 2" x 60" iron pipe in place up 1.7'  
DATE
- left monument as found,  lowered monument,  removed monument (explain)
- On \_\_\_\_\_ placed a \_\_\_\_\_  
DATE

### SKETCH OF REFERENCE TIES



All measurements are to spks. in side of tree, trees are double blazed, scribed and painted red, with USFS 54-3 bearing tree tags attached.

Statement of evidence relative to this corner location is on back of page. 291630

I hereby certify that this document and the data contained herein was prepared by me or under my direct supervision.

Walter E. Puro 9-10-86  
SIGNATURE DATE

Registration No. 11395  
 Land Surveyor,  Professional Engineer  
 County Surveyor,  County Engineer

#### OFFICE OF THE COUNTY RECORDER

County of Cass

I hereby certify that this document was filed in the Co. Recorders office at 9:30 A.M. on the 15 day of Sept. A.D., 19 86

County Recorder Claudine Kayler  
By ms, Deputy

DOCUMENT NO. 291630

Statement of Evidence: Northeast Corner Section 24, T. 145 N., R. 29 W.,  
5th P.M.

- 1873 U.S. General Land Office survey set a wood post for this corner and marked the following bearing trees: 12" J. Pine N 31 E 23 lks., 8" J. Pine N 19 W 15 lks., 10" J. Pine S 65 W 46 lks., 7" J. Pine S 60 E 12 lks.
- 1963 Bill Okerman, USFS Surveyor, found stump holes and/or charred pine stumps of all four GLO BT's. He set a 2" x 60" iron post with 3" bronze cap, sign post South 4.25. He also marked the following bearing trees: 15" J. Pine N 65½ W 61.3', 6" Oak N 44 E 126.5', 6" Oak S 16½ E 137.5', 11" J. Pine S 53½ W 56.7'. He filed a Certificate of Location of Government Corner.
- 1979 MN Dept. of Natural Resources survey crew found Okerman's monument up 1.7'
- 1986 On August 22, Walter E. Curo found the 2" x 60" iron pipe in place and marked new bearing trees: 5" Norway Pine N 40 W 19.92', 7" Norway Pine N 5 E 17.60", 8" Norway Pine N 80 E 10.06', 5" Norway Pine S 23 E 42.01'. He files this certificate to update the 1963 Okerman certificate.