

CERTIFICATE OF LOCATION OF GOVERNMENT CORNER

Southeast Corner of Section 24, Township 143 N., Range 28 W., 5 th P.M.

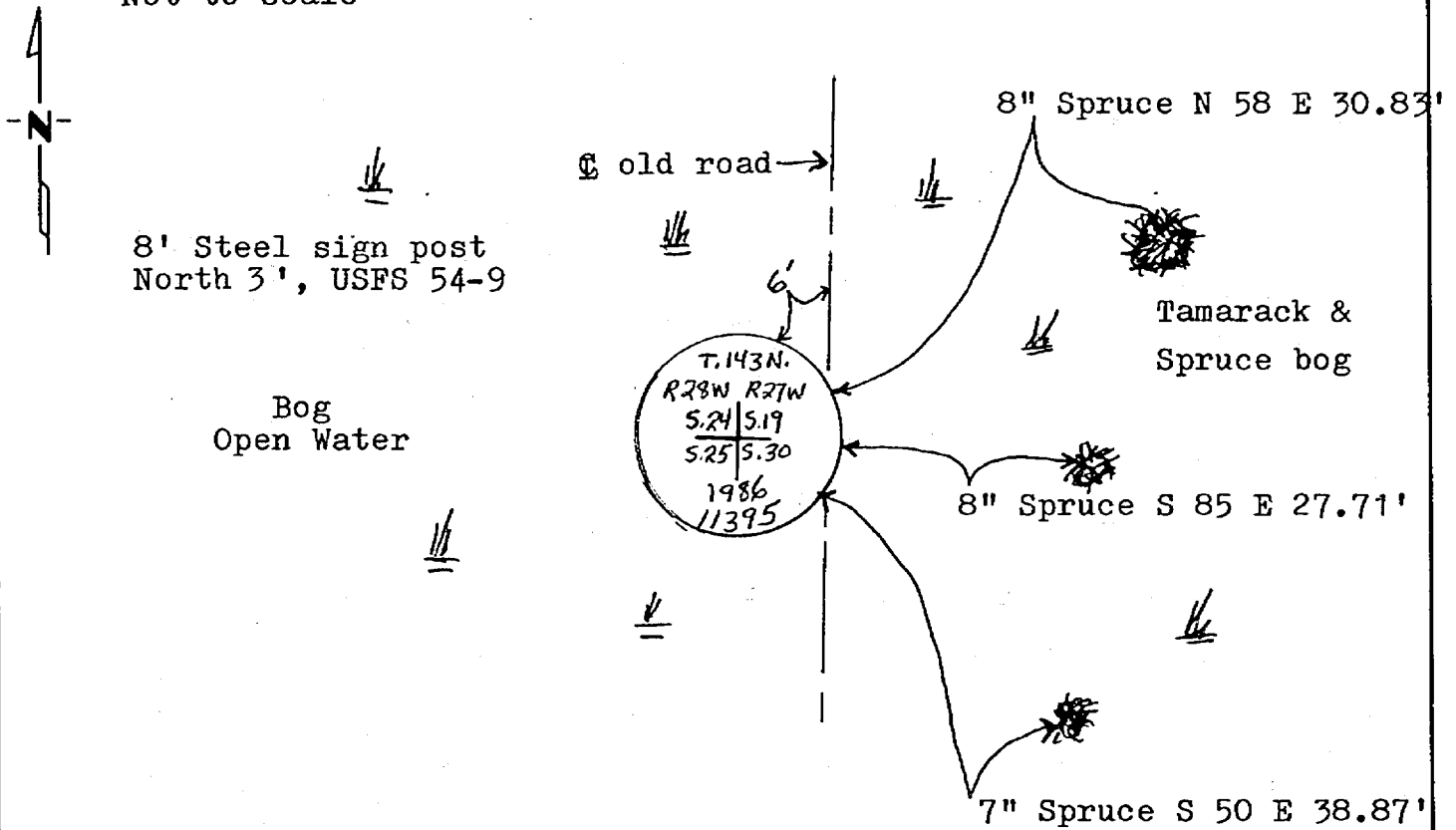
STATE OF MINNESOTA, County of CASS

At the corner location shown on the sketch:

- On _____ found a _____
DATE
- left monument as found, lowered monument, removed monument (explain)
- On 7/29/86 placed a 2"x60" galv. iron pipe with brass cap.
DATE
18" above ground, 6' west of center of old road

Not to Scale

SKETCH OF REFERENCE TIES



All measurements are to nails in side of trees, trees are double blazed, scribed and painted red with USFS 54-3 bearing tree tags attached.

Statement of evidence relative to this corner location is on back of page. 291483

I hereby certify that this document and the data contained herein was prepared by me or under my direct supervision.

Walter E. Ross 9-4-86
SIGNATURE DATE

Registration No. 11395

- Land Surveyor, Professional Engineer
- County Surveyor, County Engineer

OFFICE OF THE REGISTER OF DEEDS

County of Cass

I hereby certify that this document was filed in the Reg. of Deeds office at 3:43 P.M. on the 5 day of Sept. A.D., 19 86

Register of Deeds Claudine Kayler

By MS, Deputy

DOCUMENT NO. 291483

Statement of Evidence: Southeast Corner Section 24, T. 143 N., R. 28 W.,
5th P.M.

- 1873 U.S. General Land Office survey set a wood post for this corner and marked the following bearings: 6" Tam N 70 E 22 lks., 3" Tam N 20 E 29 lks., 4" Tam N 75 W 33 lks., 7" Tam S 30 W 56 lks.,
- 1920 County Survey Record Book "C", page 340, shows a survey by J.H. Flynn. He found the corner.
- 1920 County Survey Record Book "C", page 393, shows a survey by Ben Clark. He found the corner and set a 3"x24" I.P. with cap.
- 1920 County Resurvey Plat "E-7", by E.B. Horst, shows corner in place.
- 1986 On July 29, Walt Curo set a 2x60" galv. I.P. with brass cap by extending the south line of Section 19-143-27 west by prorating the distance from the South $\frac{1}{4}$ corner and the West $\frac{1}{16}$ corner according to 1920 measurements. Corner is 18" above ground, 6' West of center of road.