

CERTIFICATE OF LOCATION OF GOVERNMENT CORNER

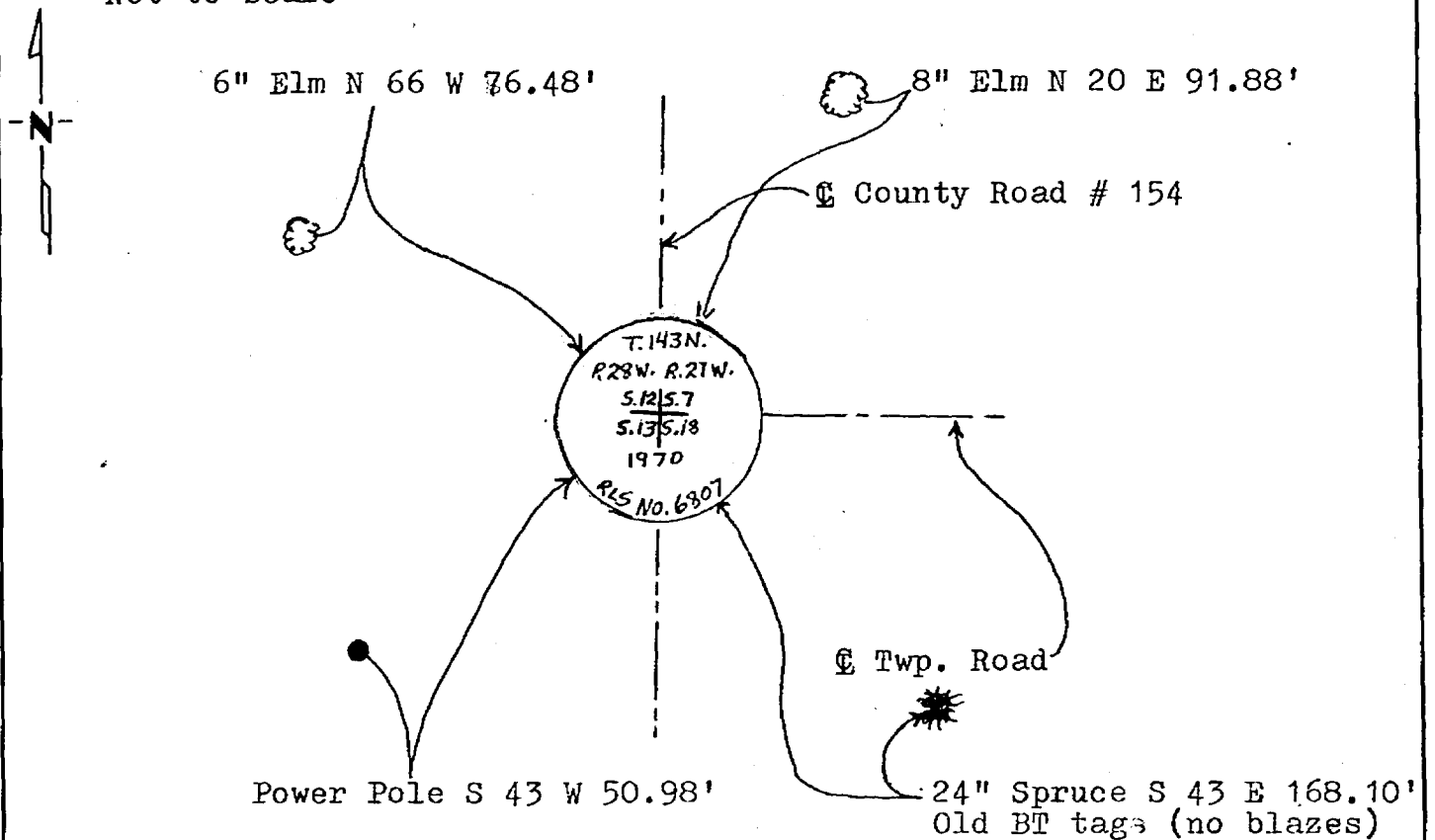
Southeast Corner of Section 12, Township 143 N, Range 28 W, 5th P.M.
 STATE OF MINNESOTA, County of CASS

At the corner location shown on the sketch:

- On 6/28/86 found a brass cap monument in concrete, 8" below
DATE
surface of County Road # 154
- left monument as found, lowered monument, removed monument (explain)
- On _____ placed a _____
DATE

SKETCH OF REFERENCE TIES

Not to scale



All measurements are to nails in side of trees, trees are double blazed scribed and painted red, with USFS 54-3 bearing tree tags attached.

Statement of evidence relative to this corner location is on back of page. 291479

I hereby certify that this document and the data contained herein was prepared by me or under my direct supervision.

Walter E. Reed 9-4-86
SIGNATURE DATE

Registration No. 11395

- Land Surveyor, Professional Engineer
- County Surveyor, County Engineer

OFFICE OF THE REGISTER OF DEEDS

County of Cass

I hereby certify that this document was filed in the Reg. of Deeds office at 3:39 P.M. on the 5 day of Sept. A.D., 19 86

Register of Deeds Claudine Kayler

By MS, Deputy

DOCUMENT NO. 291479

Statement of Evidence: Southeast Corner Section 12, T.143 N., R.28 W., 5th P.M.

- 1873 U.S. General Land Office survey set a wood post for this corner and marked the following bearing trees: 5" Poplar WEST 5 lks., 7" Poplar NORTH 8 lks., 7" Poplar N 40 E 25 lks. 8" Birch S 55 E 22 lks.
- unknown County Survey Record Book "B", pages 94-95, show a survey by Geo. Ralph. Notes show an iron stake and new bearings: 10" Maple N 55-30 E 66.4', 12" Birch S 37-30 W 72.0'
- 1925 Cass County Highway Dept. notes on State Road #4, show corner in place and the following bearings: Telephone Pole NW 33.6', Maple stump NE 75.7'
- 1970 U.S. Forest Service records show corner perpetuated by setting a 5½" x 5½" x 24" concrete monument, 6" below road surface, capped with a 3" brass tablet. Notes show the following bearings: 17" White Spruce S 43 E 168.1', 9" Elm N 46 W 313.9', U.S.G.S. triangulation station DRUM 1959 N 36 E 49.0', 4x4x72" Cedar post N 48 W 38.6'
- 1985 U.S. Forest Service personal G.Kosenko, B.Aušk, & G.Robertson, found the concrete monument below road surface and all witnesses in good shape.
- 1986 On June 28, Walt Curo found the brass cap monument 8" below road surface and accepts this as perpetuation of the original corner.