

CERTIFICATE OF LOCATION OF GOVERNMENT CORNER

Southeast Corner of Section 34, Township 142, Range 26, 5th P.M.
Cass

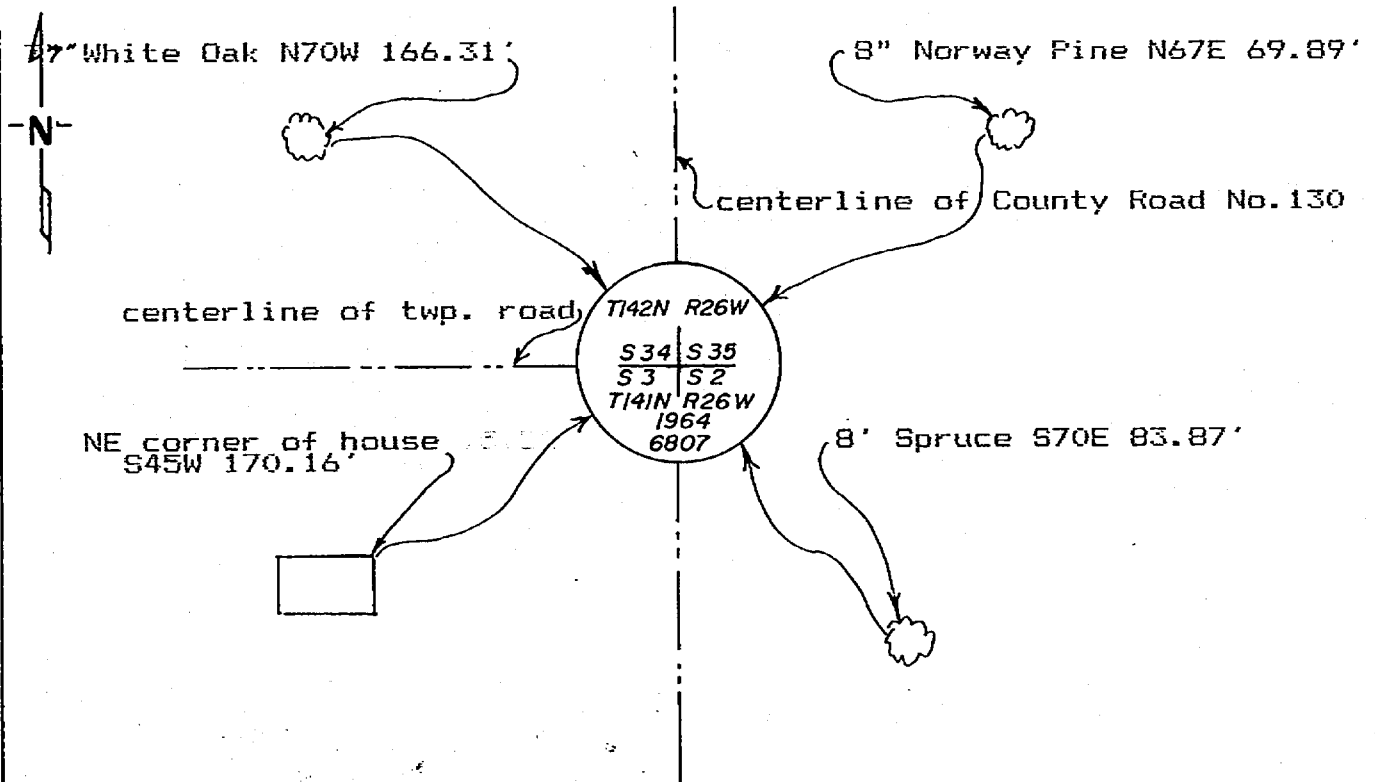
STATE OF MINNESOTA, County of _____

At the corner location shown on the sketch:

- On 5-6-86 found a 3/4" iron pin on top of a 2" brass cap
12' below surface of County Road number 130
- left monument as found, lowered monument, removed monument (explain)
- On _____ placed a _____
DATE

Not to scale.

SKETCH OF REFERENCE TIES



All measurements are to spks. in side of the tree, trees are double blazed and scribed and painted red with USFS 54-3 bearing tree tag.

Statement of evidence relative to this corner location is on back of page. 291475

I hereby certify that this document and the data contained herein was prepared by me or under my direct supervision.

Walter E. Laro 9-2-86
SIGNATURE DATE

Registration No. 11395
 Land Surveyor, Professional Engineer
 County Surveyor, County Engineer

OFFICE OF THE REGISTER OF DEEDS
 County of Cass

I hereby certify that this document was filed in the Reg. of Deeds office at 3:35 P.M. on the 5 day of Sept A.D., 1986

Register of Deeds Claudine Kayler
 By ms, Deputy

DOCUMENT NO. 291475

STATEMENT OF EVIDENCE Southeast Corner Section 34, T.142 N., R.26 W., 5th P.M.

- 1871 U.S. General Land Office survey set a wood post for this corner and marked the following bearing trees: 12" Spruce N 22 W 10 lks., 10" Spruce N 6 E 17 lks., 6" Spruce S 44 E 15 lks., 24" W. Pine S 18 W 37 lks.
- 1922 James Flynn found an iron pipe and old 24" W. Pine stump SW. County Book "D" page 51.
- 1951 Harold Curo, found an iron pipe in place, but twisted out of shape. Set a 120 d spike and marked new bearing trees: 10" Spruce N 77-12 E 140.50', 5" W. Oak N 14-30 W 79.25', 12" Tele. pole S 16-53 W 82.35', 14" Basswood S 36-40 E 126.80'. County Book "D" page 376.
- 1964 Bill Okerman, USFS Surveyor, found iron pipe and BT's marked by Harold Curo. He replaced the pipe with a concrete monument with bronze tablet and filed a Certificate of Location of Government Corner.
- 1986 Walter E. Curo found the concrete monument with a pin on top and files this certificate to update the 1964 Okerman certificate.