

CERTIFICATE OF LOCATION OF GOVERNMENT CORNER

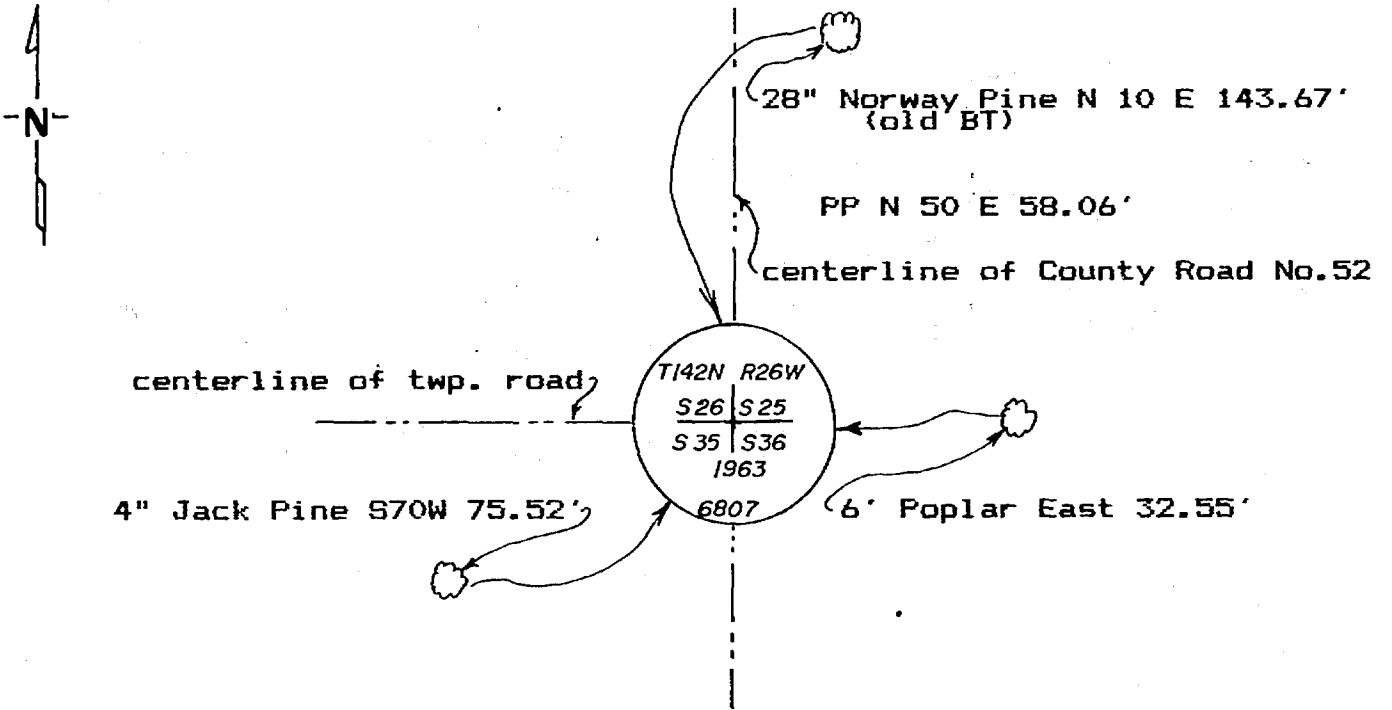
Southeast Corner of Section 26, Township 142, Range 26, 5th P.M.
 STATE OF MINNESOTA, County of Cass

At the corner location shown on the sketch:

- On 5-7-86 found a railroad spike on top of a 2" brass cap 8" below surface of County Road No. 52
- left monument as found, lowered monument, removed monument (explain)
- On _____ placed a _____

Not to scale.

SKETCH OF REFERENCE TIES



All measurements are to spks. in side of the tree, trees are double blazed and scribed and painted red with USFS 54-3 bearing tree tag.

Statement of evidence relative to this corner location is on back of page.

291472

I hereby certify that this document and the data contained herein was prepared by me or under my direct supervision.

Walter E. Leno 9-2-86
SIGNATURE DATE

Registration No. 11395
 Land Surveyor, Professional Engineer
 County Surveyor, County Engineer

OFFICE OF THE REGISTER OF DEEDS

County of Cass
 I hereby certify that this document was filed in the Reg. of Deeds office at 3:32 P.M. on the 5 day of Sept. A.D., 19 86
 Register of Deeds Claudia Kayler
 By ms Deputy
 DOCUMENT NO. 291472

STATEMENT OF EVIDENCE Southeast Corner Section 26, T. 142 N., R.
26 W., 5th P.M.

- 1872 U.S. General Land Office survey set a wood post for this corner and marked the following bearing trees: 24" W. Pine S 84 E 54 lks., 24" W. Pine N 43 E 51 lks., 20" W. Pine S 7 W 21 lks., 24" W. Pine N 36 W 88 lks.
- 1912 James Flynn found old Govt. BT's and set a 3/4" x 32" iron monument. County Book "B" page 514-515.
- 1921 James Flynn used this corner in the Resurvey of Section 26.
- 1963 Bill Okerman for the USFS found iron monument set by Flynn. He replaced this iron with a 6" dia concrete monument with bronze tablet 6" below surface and filed a certificate of Location of Government Corner.
- 1982 Walter E. Curo under contract with USFS to establish the South 1/16 corner of Section 26, found this corner and set a Railroad spike on top.
- 1986 Walter E. Curo under contract with USFS found the corner with the Railroad spike on top and files this certificate to update the 1963 Okerman certificate.