

# CERTIFICATE OF LOCATION OF GOVERNMENT CORNER

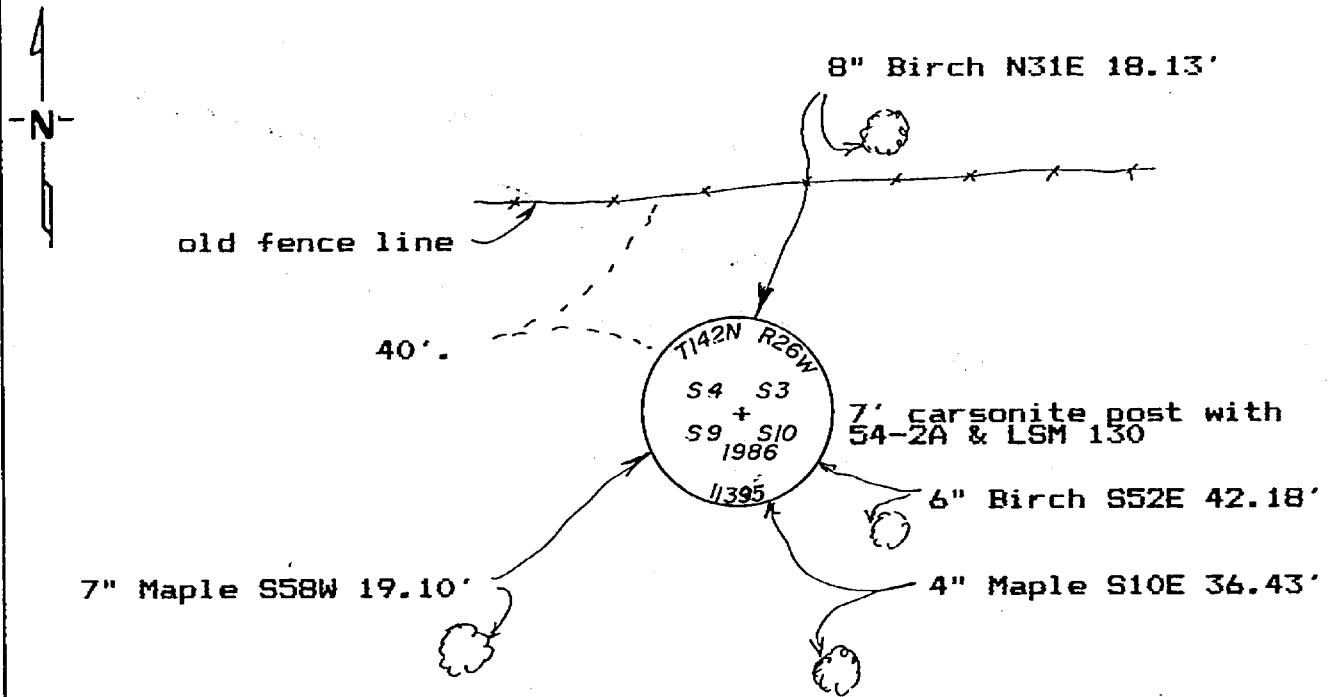
Southeast Corner of Section 4, Township 142, Range 26, 5th P.M.  
Cass

STATE OF MINNESOTA, County of \_\_\_\_\_

At the corner location shown on the sketch:

- On \_\_\_\_\_ found a \_\_\_\_\_  
DATE
- left monument as found,  lowered monument,  removed monument (explain)
- On 5-21-86 placed a 2"x60" galv. iron pipe with brass cap  
DATE with 18" out of the ground

Not to scale. SKETCH OF REFERENCE TIES



All measurements are to spks. in side of the tree, trees are double blazed and scribed and painted red with USFS 54-3 bearing tree tag.

Statement of evidence relative to this corner location is on back of page.

I hereby certify that this document and the data contained herein was prepared by me or under my direct supervision.

Walter E. Cass 8-13-86  
SIGNATURE DATE

Registration No. 11395  
 Land Surveyor,  Professional Engineer  
 County Surveyor,  County Engineer

290924  
OFFICE OF THE REGISTER OF DEEDS  
County of Cass

I hereby certify that this document was filed in the Reg. of Deeds office at 3:55 P.M. on the 15 day of August A.D., 1986

Register of Deeds Clondine Kayler

By MS, Deputy

DOCUMENT NO. 290924

STATEMENT OF EVIDENCE Southeast Corner of Section 4, Township 142 north, Range 26 West of the 5th Principal Meridian

1872 GLO set a wood post to mark this corner and marked the following BT'S

10" Birch	North 2 West	28 Lks (18.48 feet)
6" White Pine	South 44 East	12 Lks ( 7.92 feet)
8" Birch	South 42 West	8 Lks ( 5.28 feet)
10" Birch	North 42 East	11 Lks ( 7.26 feet)

1964 USFS made a search for this corner but found no evidence

1979 USFS ran an extensive traverse connecting corners to the east, west, & north. They traversed through the area of this corner and made another search, but found no evidence.

1986 Walter E. Curo ran a traverse connecting corners to the south to the traverse run by the USFS in 1979. From this information there appears to be a large discrepancy in Sec. 4 of about 400-500 feet long north and south and about 100 feet short east and west.

I met with Ken Whitehorn USFS surveyor and Mike Hayes USFS surveyor and Ken said that sec. to the west (4-5-6) show a similar pattern, and that the north line of sec.3 bears 4-5 degrees south.

I computed a search area at a point proportioned between corners to the east and west. at this spot I found a large pine stump, badly burned and deteriorated. Onthe inside I found a piece of it with axe marks on it at about 3-4" from the approxamate center. It was to small of piece of wood to show any more marks. There are a lot of big pine stumps around this area, but none within 40-50'.

I believe this is the White Pine BT. and I set a monument.