

**CERTIFICATE OF LOCATION OF GOVERNMENT CORNER**

For the Center East-East One-sixtyfourth Corner of Section 8, Township 141 North, Range 29 West of the 5th Principal Meridian, STATE OF MINNESOTA, County of Cass.

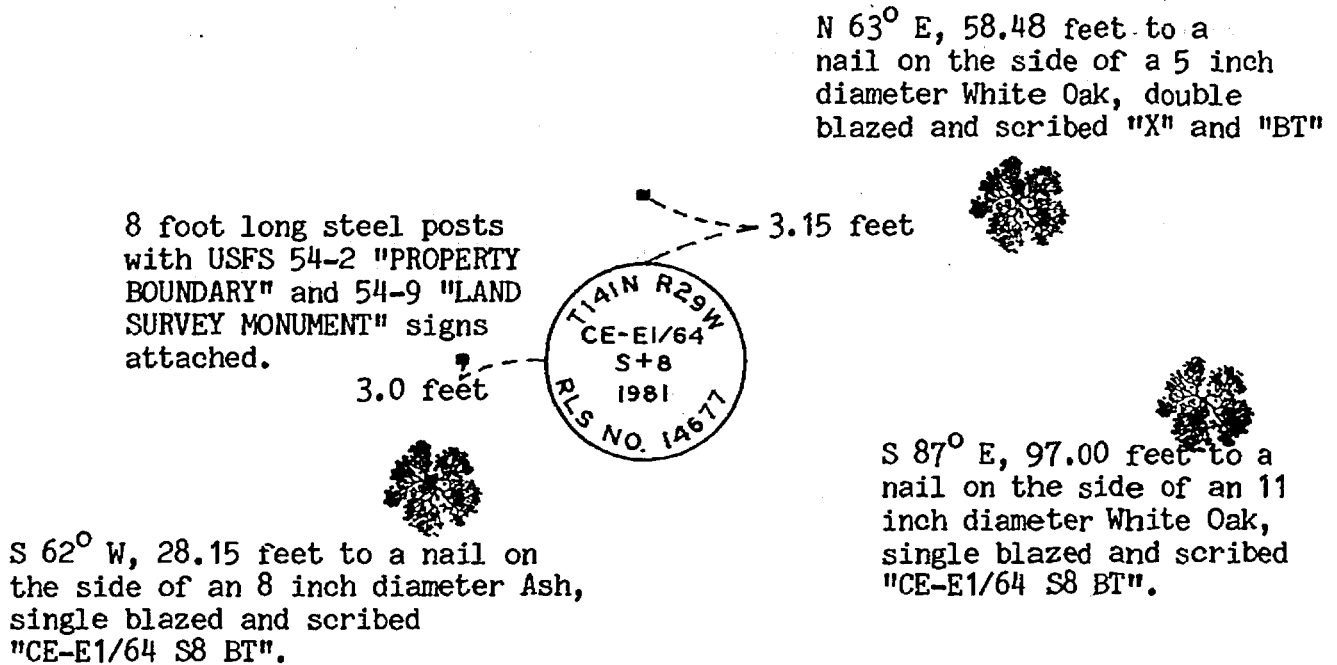
On July 1, 1981, to mark this corner position, we set a 2.5 inch (outside diameter) by 36 inch long galvanized iron pipe topped with a 3 inch diameter brass tablet, up 10 inches and stamped as shown in the sketch.

**SKETCH OF REFERENCE TIES**

Top of Page is NORTH

(not to scale)

decl: 5° E



All bearing trees are marked with red enamel, and a USFS 54-3 "BEARING TREE TAG".

Statement of evidence relative to this corner position is on the back.

I hereby certify that this survey, plan, or report was prepared by me or under my direct supervision and that I am a duly Registered Land Surveyor under the laws of the State of Minnesota.

*Kenneth L. Whitehorn*  
 Kenneth L. Whitehorn

Date July 2, 1981 Registration No. 14677

290145  
 OFFICE OF THE COUNTY RECORDER  
 County of Cass

I hereby certify that this document was filed in the office of the County Recorder this 16 day of July, 1986, at 9:05 A.M. and assigned DOCUMENT NUMBER 290145.

*Claudine Kaylor*  
 Claudine Kaylor, County Recorder  
 ms

**STATEMENT OF EVIDENCE:** The Center East-East One-sixtyfourth Corner of Section 8, Township 141 North, Range 29 West of the 5th Principal Meridian.

This corner position was not monumented in the original Township survey by P. H. Conger, Deputy Surveyor, under contract to the General Land Office in 1873. The notes for this survey are on file in the Office of the Secretary of State, St. Paul, Minnesota,

No intervening history has been recovered that records any monumentation or perpetuation of this corner position.

A search area for this corner position was determined using single proportionate methods based on coordinates determined from an EDM/Teodolite traverse between the East Quarter and Centereast One-sixteenth Corners of said section 8. On July 1, 1986, Gary Brama and Curt Krause, USDA-Forest Service (USFS), searched this area for evidence of a corner position but nothing was found. This proportionate position was then monumented and referenced as shown on the front of this document.