

CERTIFICATE OF LOCATION OF GOVERNMENT CORNER

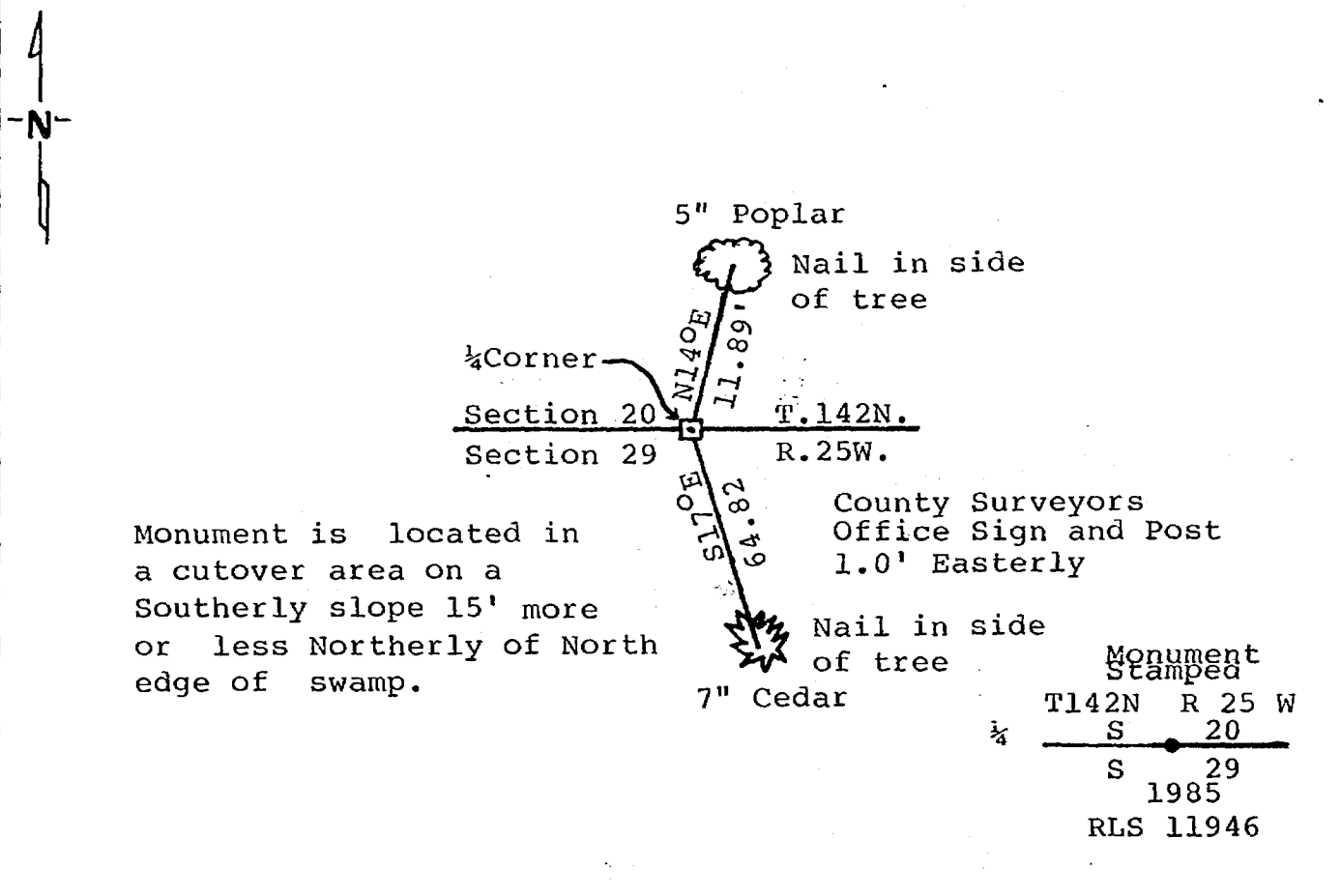
North Quarter Corner of Section 29, Township 142N, Range 25W, 5th P.M.

STATE OF MINNESOTA, County of Cass

At the corner location shown on the sketch:

- On _____ found a _____
DATE
- left monument as found, lowered monument, removed monument (explain)
- On 10-3-85 placed a 2" Square Tubular Steel Aluminum Monument
DATE
Stamped

SKETCH OF REFERENCE TIES



Statement of evidence relative to this corner location is on back of page. 286 239

I hereby certify that this document and the data contained herein was prepared by me or under my direct supervision.

Roger A. Mustonen 12/3/85
SIGNATURE DATE

Registration No. 11946

Land Surveyor, Professional Engineer
 County Surveyor, County Engineer

OFFICE OF THE REGISTER OF DEEDS
County of Cass

I hereby certify that this document was filed in the Reg. of Deeds office at 3:25 P.M. on the 9 day of Dec A.D., 1985

Register of Deeds Clairine Kayler
By MS, Deputy

DOCUMENT NO. 286 239

STATEMENT OF EVIDENCE:

North Quarter Corner of Section 29, Township
142 North, Range 25 West of the 5th Principal
Meridian

- 1871 Walker, Allen & Putman, contract surveyors for the General Land Office set a post from which a Birch 8" brs N18W 108 lks
a Birch 9" brs S81W 123 lks
- 1985 Roger A. Mustonen, RLS 11946, under contract with the USFS and a private landowner to survey part of Section 29 re-established the corner position by single proportionate method, on line and equal distance from the northwest corner and the northeast corner of Section 29.

The northeast corner of Section 29 being previously certified by William Okerman, RLS

On 10/3/85 after a thorough diligent search of the corner vicinity placed a 2" tubular County Monument and accepts the same as the North Quarter Corner of Section 29.