

CERTIFICATE OF LOCATION OF GOVERNMENT CORNER

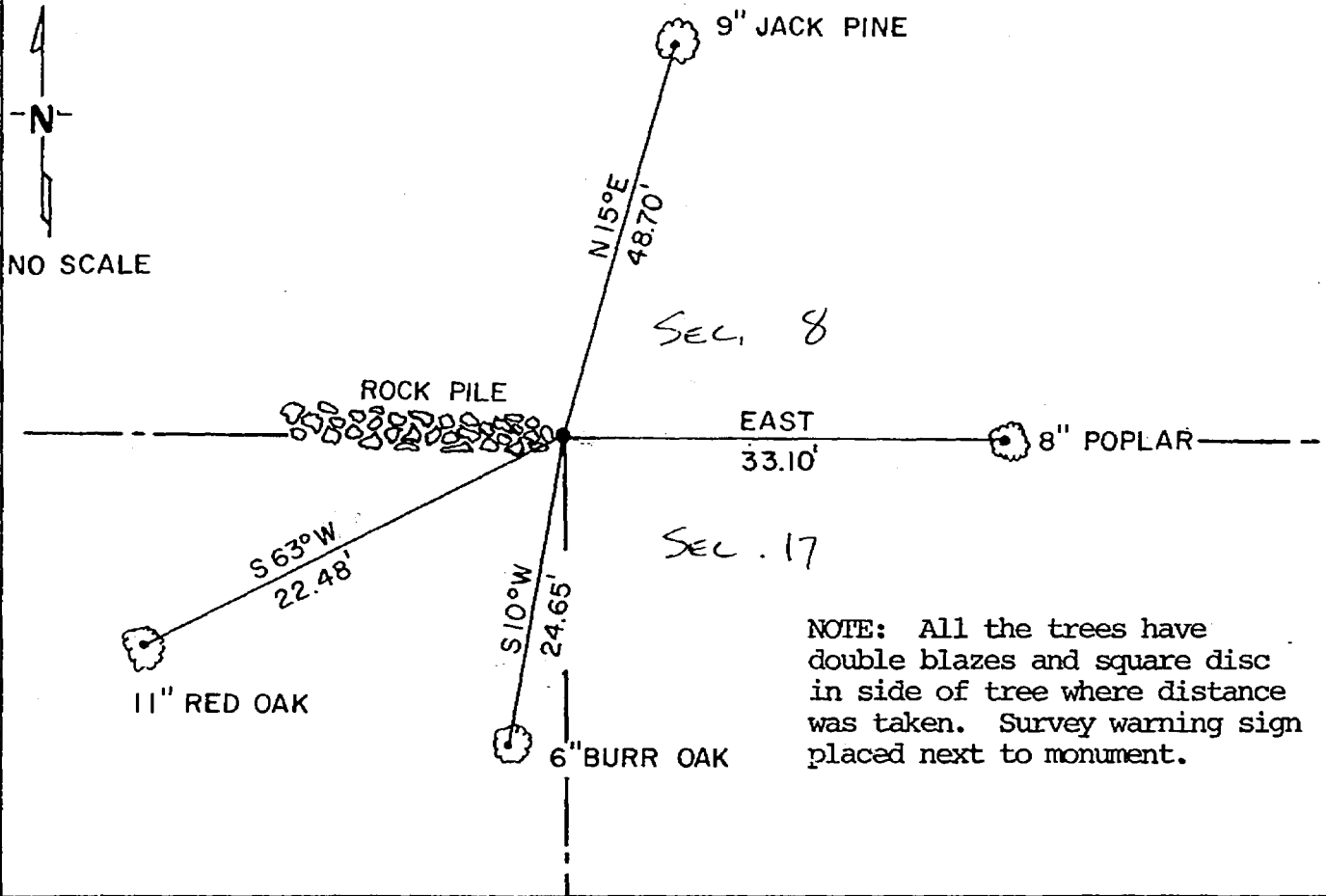
NORTH QUARTER Corner of Section 17, Township 133, Range 31, 5th P.M.

STATE OF MINNESOTA, County of Cass

At the corner location shown on the sketch:

- On 1/9/85 found a 3" iron with plumbers cap 24" above ground
DATE
tipped slightly
- left monument as found, lowered monument, removed monument (explain)
- On _____ placed a _____
DATE

SKETCH OF REFERENCE TIES



NOTE: All the trees have double blazes and square disc in side of tree where distance was taken. Survey warning sign placed next to monument.

Statement of evidence relative to this corner location is on back of page. 285840

I hereby certify that this document and the data contained herein was prepared by me or under my direct supervision.

David S. Lardner 9/13/85
SIGNATURE DATE

Registration No. 17008

- Land Surveyor, Professional Engineer
- County Surveyor, County Engineer

OFFICE OF THE COUNTY RECORDER
County of Cass

I hereby certify that this document was filed in the RECORDER'S office at 3:10 P. M. on the 19 day of Nov. A.D., 1985

COUNTY RECORDER Claudine Kayler

By ms Deputy

DOCUMENT NO. 285840

STATEMENT OF EVIDENCE FOR: North quarter corner, Section 17,
Township 133 North, Range 31 West, Cass County, Minnesota.

In 1863, the original Government Survey was performed and a wood post was set to mark this corner location.

In 1915 N. D. Gorman set iron pipe at this position at a single proportionate distance between the Northeast and Northwest corner of said Section 17. County Book "B", page 490 - 495.

In 1984 and 1985 Landecker & Associates, Inc. while surveying in said Section 17 found Gorman corner. This corner position also fits occupation of existing land ownership in the area.

Landecker & Associates, Inc. accepts this monument to be a perpetuation of the original Government corner.